

# The Hub

## BASIC NEEDS RESOURCE GUIDE



Shasta College





# THE HUB

## BASIC NEEDS RESOURCE GUIDE

### TABLE OF CONTENTS

**SHASTA COLLEGE CAMPUS RESOURCES ..... 6**

**FOOD RESOURCES**

    Campus CalFresh Assistance ..... 6

    Shasta Knights Food Pantry ..... 6

**HOUSING RESOURCES**

    Shasta College Dorms ..... 7

**MENTAL AND PHYSICAL HEALTH**

    Student Health and Wellness ..... 7

**FINANCIAL RESOURCES**

    Financial Aid Office ..... 8

    Shasta College Foundation – Survive and Thrive Funding ..... 8

    Student Employment ..... 8

**TEXTBOOK RESOURCES**

    Financial Aid Textbook Assistance ..... 9

    Shasta College Library ..... 9

**SHASTA COUNTY RESOURCES ..... 10**

**FOOD RESOURCES**

    CalFresh (SNAP) ..... 10

    Dignity Health Food Bank ..... 10

    Good News Rescue Mission – Food Program..... 11

    Salvation Army – Weekly Food Pantry ..... 11

    Shasta Lake Food Closet..... 11

**HOUSING RESOURCES**

    Faithworks! - Transitional Housing Program ..... 12

    Good News Rescue Mission..... 12

    Krista Transitional Housing Program..... 12

    Nation's Finest Redding ..... 13

    Ready For Life Host Homes ..... 13

    Redding Housing Authority ..... 13

**MENTAL AND PHYSICAL HEALTH**

    Dunamis Wellness - Mental Health Services..... 14

    Hill Country Health and Wellness Center - Center of Hope..... 14

    North American Mental Health Services..... 15

    Shasta County HHSA - Adult Mental Health Services..... 15

**CLOTHING**

    Community Closet ..... 16

    Northern Valley Catholic Social Service – Clothes That Work!..... 16

    Shasta County HHSA - General Assistance ..... 16

**FINANCIAL**

    Shasta County HHSA - General Assistance ..... 17

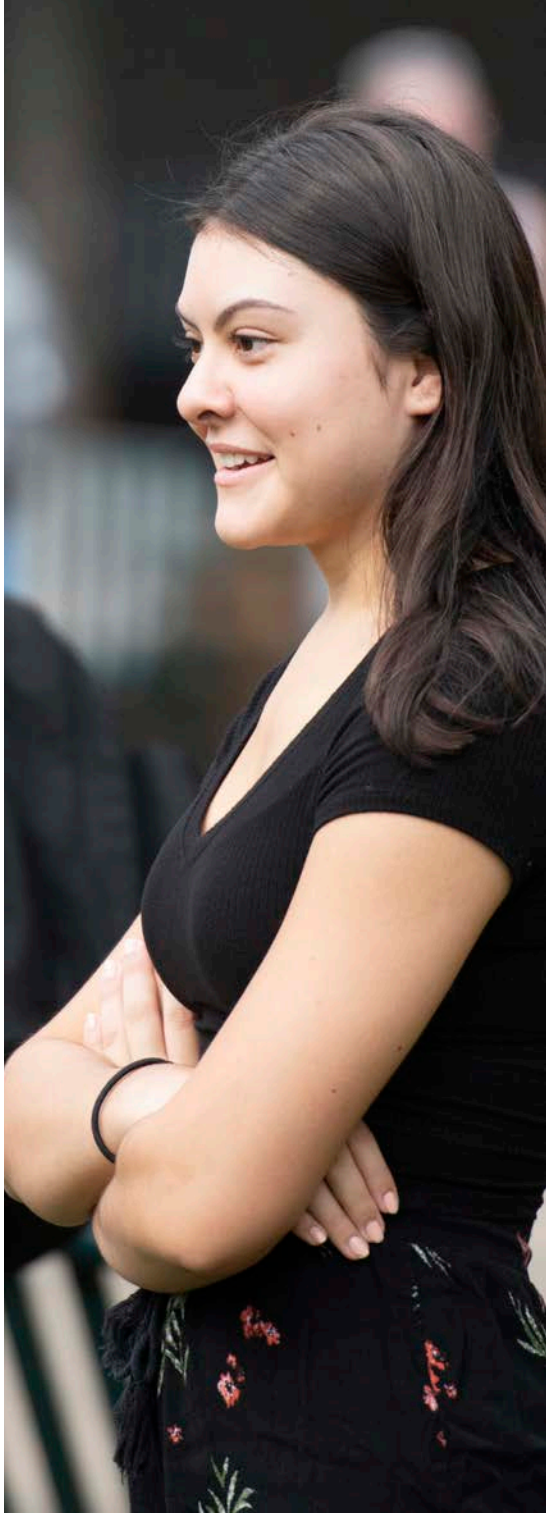
**TRANSPORTATION**

    Life Cycles- Living Hope Bike Shop ..... 17

    Redding Area Bus Authority (RABA)..... 18

    Sage Stage..... 18

    ShastaConnect Door-to-Door Service..... 18







**TEHAMA COUNTY RESOURCES ..... 19**

**FOOD RESOURCES**

CalFresh ..... 19  
Salt Ranch ..... 19  
Tehama County Food Bank – The Gleaners ..... 20  
The Salvation Army ..... 20

**HOUSING RESOURCES**

Empower Tehama ..... 21  
PATH – Pathways Men’s Transitional Housing ..... 21  
PATH – Rapid Re-Housing ..... 21  
PATH – SALE House ..... 22  
Tehama County Community Action Agency ..... 22

**MENTAL AND PHYSICAL HEALTH**

Tehama County Health Services Agency – Behavioral Health ..... 23  
Tehama County Health Services Agency – Medical Clinic ..... 23  
Tehama County Health Services Agency – Substance Use Recovery ..... 23  
Victor Community Support Services (VCSS) ..... 24

**TRANSPORTATION**

Medical Transportation Services (METS) ..... 24  
Tehama Rural Area Express (TRAX) ..... 24

**INTERMOUNTAIN/EAST SHASTA RESOURCES ..... 25**

**FOOD RESOURCES**

Circle of Friends ..... 25  
Burney Food Co-op ..... 25

**MENTAL AND PHYSICAL HEALTH**

Circle of Friends ..... 26

**CLOTHING**

Circle of Friends ..... 26

**TRANSPORTATION**

Shasta Connect Door-to-Door Service ..... 27

**TEXTBOOK RESOURCES**

Shasta Public Libraries - Burney ..... 27

**TRINITY COUNTY RESOURCES ..... 28**

**FOOD RESOURCES**

Weaverville Community Food Cupboard ..... 28  
Mountain Chapel Soup Kitchen ..... 28  
Trinity County Food Bank ..... 29  
Solid Rock Christian Fellowship Soup Kitchen ..... 29

**HOUSING RESOURCES**

Human Response Network (HRN) ..... 29

**MENTAL AND PHYSICAL HEALTH**

Trinity Co. Behavioral Health Services Crisis Line ..... 30

**CLOTHING**

Human Response Network (HRN) ..... 30

**FINANCIAL**

Human Response Network (HRN) ..... 30

**TRANSPORTATION**

Trinity Transit ..... 31

**TEXTBOOK RESOURCES**

California Tribal TANF Partnership (CTTP) Trinity Site ..... 31







## FOOD

### CalFresh Assistance

Students have a direct point of contact who can assist with application help, eligibility screening, interview preparation, etc.

#### LOCATION

Shasta College - Redding Campus  
The Hub - 2300 Building, Room 2308  
Phone and internet access to assist the application process.

#### CONTACT

Jilmarie Bentley  
(530) 225-0182  
jbentley@shastacoe.org

Aaron Steinmetz  
(530) 605-2683  
asteinmetz@shastacoe.org

#### ELIGIBILITY RESTRICTIONS

All students are able to contact Jilmarie Bentley or Aaron Steinmetz to learn more.

### Shasta Knights Food Pantry

A Shasta College student can visit the Food Pantry once every seven days. Walk-ins welcome.

#### LOCATION

The Hub - 2300 Building, Room 2308

#### CONTACT

The Hub  
530-242-7626  
thehub@shastacollege.edu

#### ELIGIBILITY RESTRICTIONS

Must be registered in the current semester. Students can use the Food Pantry once every seven days.



## HOUSING

### Shasta College Dorms

Shasta College maintains two dormitories, one for 63 women and one for 63 men with a commons building providing indoor and outdoor recreational space.

#### LOCATION

Shasta College – Redding Campus  
Residence Halls, 19733 Shasta College Drive, Redding, CA 96003

#### CONTACT

Allie Hancock  
*Director of Residence Life*  
(530) 242-7739  
ahancock@shastacolleg.edu

#### ELIGIBILITY RESTRICTIONS

Students are admitted on a first-come, first-served basis.



## MENTAL & PHYSICAL

### Student Health and Wellness

The Health and Wellness Office offers psychological counseling, doctor and nurse visits, online health screenings, smoking and tobacco cessation assistance, and more.

#### LOCATION

Shasta College – Redding Campus  
2000 Building, Room 2020

#### CONTACT

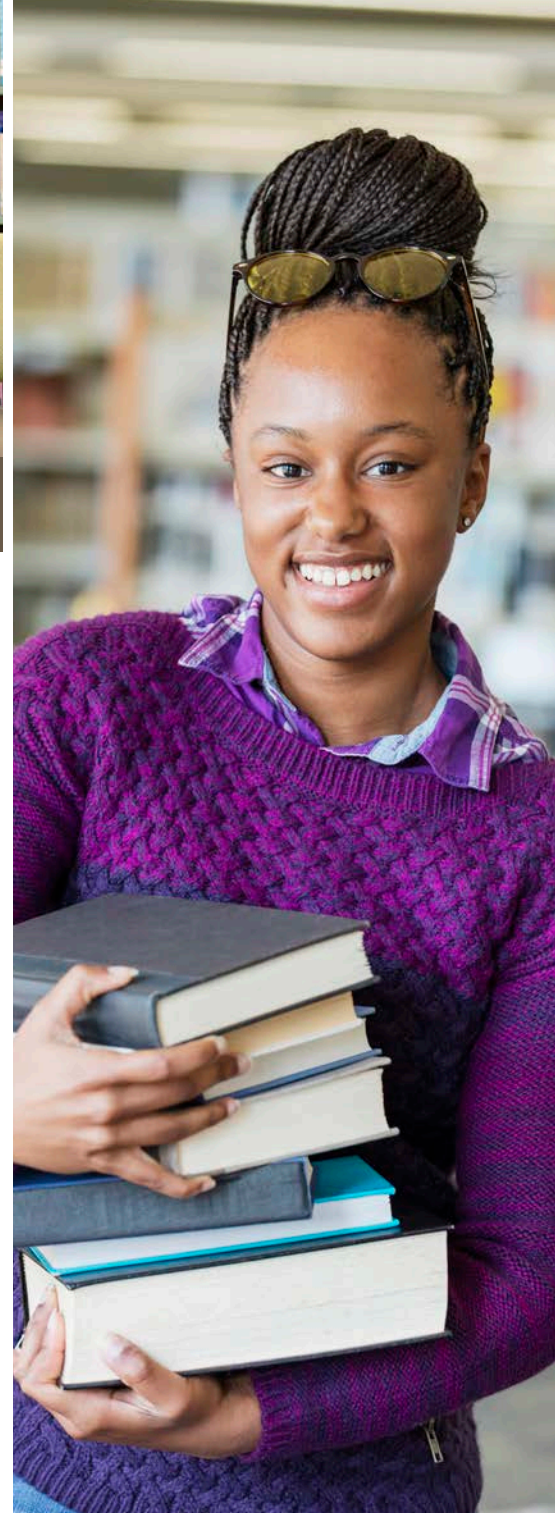
Sonja Mendes  
*Director of Student Health and Wellness / College Nurse*  
(530) 242-7580  
studenthealth@ShastaCollege.edu

#### ELIGIBILITY RESTRICTIONS

You must be a Shasta College student, registered for credit-bearing classes in the current semester, and have paid the health fee, to be eligible for services in the Health & Wellness office.







## FINANCIAL

### Financial Aid Office

The Shasta College Financial Aid department is committed to making education accessible and affordable and help students make the most of the financial aid options available to them.

#### LOCATION

Shasta College – Redding Campus  
100 Building, Room 139  
<https://www.shastacollege.edu/cost-financial-aid/>

#### CONTACT

Johnnie Owens  
*Associate Dean of Student Services*  
530-242-7719  
[jowens@shastacollege.edu](mailto:jowens@shastacollege.edu)

#### ELIGIBILITY RESTRICTIONS

All students are eligible to contact the Financial Aid office to learn more about specific types of financial aid and respective eligibility requirements.

### Foundation – Survive and Thrive Funding

The Shasta College Foundation is the non-profit arm of Shasta College. Thanks to generous donations, they are able to fund emergency aid for students.

#### LOCATION

Shasta College – Redding Campus  
100 Building, Room 112

#### CONTACT

Andree Blanchier  
*Executive Director*  
530-242-7515  
[Foundation@shastacollege.edu](mailto:Foundation@shastacollege.edu)

#### ELIGIBILITY RESTRICTIONS

Students enrolled in at least 6 units during the current semester with an expected Family Contribution (EFC) of \$10,000 or less and unmet need of \$5,000 or greater. Subject to fund availability.

### Student Employment

Employment Center is a resource for Shasta College students seeking work while attending classes, after graduation, and at the completion of their training programs.

#### LOCATION

Shasta College – Redding Campus  
2000 Building, Room 2071D

#### CONTACT

Jennifer Beckman  
*Program Director*  
530-242-7606  
[jbeckman@shastacollege.edu](mailto:jbeckman@shastacollege.edu)

#### ELIGIBILITY RESTRICTIONS

All students are eligible.

## TEXTBOOKS

### Financial Aid Textbook Assistance

Book Assistance may be either in the form of a Book Grant or Book Loan. Apply for both as book grants are limited and are awarded in order requests are received.

#### LOCATION

Shasta College – <https://www.shastacollege.edu/cost-financial-aid/types-of-financial-aid/book-assistance/>

#### CONTACT

Wendy Akins  
*Financial Aids Bookkeeper/Scholarship Processor*  
(530) 395-8514  
[wakins@shastacollege.edu](mailto:wakins@shastacollege.edu)

#### ELIGIBILITY RESTRICTIONS

All students are eligible.

### Shasta College Library

The Shasta College library is a full collection of books, textbooks, and periodicals for students to check out. There is a textbook collection, which students can check out for a full semester.

#### LOCATION

Shasta College – Redding Campus  
700 Building

#### CONTACT

(530) 242-7550  
[Library1@shastacollege.edu](mailto:Library1@shastacollege.edu)

#### ELIGIBILITY RESTRICTIONS

All students can check out textbooks, as long as they do not owe any past due balances to the library.



# SHASTA COUNTY RESOURCES



## FOOD

### CalFresh (also known as SNAP)

CalFresh (formerly Food Stamps), is a federal nutrition program that helps people with low or no income purchase healthy food. Benefits are issued on an Electronic Benefits Transfer (EBT) card to use at most grocery stores and farmers' markets.

**LOCATION**

43 Hilltop Drive  
Redding, CA. 96003

**CONTACT**

Jilmarie Bentley  
(530) 225-0182  
jbentley@shastacoe.org

Aaron Steinmetz  
530-605-2683  
asteinmetz@shastacoe.org

**ELIGIBILITY RESTRICTIONS**

Dependent on family size and income, but all residents must be U.S. citizens and legal residents, or people with a qualified immigration status.

### Dignity Health Food Bank

The Dignity Health Connected Living's Food Bank is the designated Food Bank for Shasta County. They provide food for our communities with distribution on-site at our Redding location or off-site at many locations around the county.

**LOCATION**

100 Mercy Oaks Dr,  
Redding, CA 96003

**CONTACT**

Shurla Lovejoy  
(530) 226-0181  
Shurla.lovejoy@dignityhealth.com

<https://www.dignityhealth.org/north-state/locations/connected-living/services/food-bank>

**ELIGIBILITY RESTRICTIONS**

Open to the community.



## FOOD

### Good News Rescue Mission Food Program

Founded in 1964 by a group of concerned Christians, the Good News Rescue Mission has since offered a hand up out of emotional, physical and spiritual poverty to thousands. Provides three meals a day for all in need.

**LOCATION**

3075 Veda Street  
Redding, CA 96001

<https://gnrm.org/services/food-services/>

**CONTACT**

Kitchen  
(530) 244-6810  
Resource Center  
(530) 241-5754

**ELIGIBILITY RESTRICTIONS**

Must bring a valid photo id and proof of residency dated within 30 days of usage.



### Salvation Army Weekly Food Pantry

The weekly food pantry is available Tuesday and Thursday from 9:00 am – 11:30 am. (Veterans can also access it Wednesday 9 am – 11:00 am, with valid proof of veteran status). Food is distributed in a first-come, first-served style.

**LOCATION**

2691 Larkspur Lane  
Redding, CA 96002

**CONTACT**

Dorinda Cox  
(530) 222-2207  
Dorinda.cox@uswsalvationarmy.org

<https://redding.salvationarmy.org/redding/food-pantry>

**ELIGIBILITY RESTRICTIONS**

Bring photo ID and 1-month proof of residency.

### Shasta Lake Food Closet

Provides access to a food pantry and clothing items last Friday of the month.

**LOCATION**

1501 McConnell Avenue  
Shasta Lake, CA 96019

**CONTACT**

530-275-2263

**ELIGIBILITY RESTRICTIONS**

Open to all in Shasta Lake and Mountain Gate who are in need of food or clothing.





HOUSING

Faithworks! - Transitional Housing Program

Provides transitional supportive housing for families with children and veterans who are experiencing homelessness. Services on-site include developing sustainable income sources, case management, counseling, youth specific services, parenting education, and other skill building workshops.

LOCATION

2825 West Street, #1  
Redding, CA 96001

CONTACT

(530) 242-1121  
<https://www.faith-works.cc/>

ELIGIBILITY RESTRICTIONS

Open to homeless families with children and Veterans in Shasta County.

Good News Rescue Mission

Provides an emergency shelter for homeless individuals and families.

LOCATION

2842 S Market St  
Redding, CA 96001

CONTACT

Jonathan Anderson  
*Executive Director*  
(530) 242-5920

<https://gnrm.org/services/emergency-shelter/>

ELIGIBILITY RESTRICTIONS

Dependent on room availability, guests may stay in emergency shelter for up to 30 days.

Krista Transitional Housing Program

Serves youth who have aged out of the foster care system in Shasta and surrounding counties, preparing them for a successful transition into independent living.

LOCATION

1135 Pine Street, Suite 21  
Redding, CA 96001

CONTACT

Bob Phillips  
*Executive Director*  
(530) 246-1259  
[bobp@kristafosterhomes.org](mailto:bobp@kristafosterhomes.org)

<https://kristafosterhomes.org/transitional-housing>

ELIGIBILITY RESTRICTIONS

Open to youth ages 18-21 who have aged out of foster care.

HOUSING

Nation's Finest Redding

Nation's Finest is a non-profit organization dedicated to helping veterans. Our Redding office provides housing assistance for homeless or imminently homeless military veterans. Our Park Marina House provides sober transitional housing for vets.

LOCATION

153 Hartnell Avenue, Suite 100  
Redding, CA 96002

CONTACT

Rebecca Dariceck  
(530) 223-3211  
[Info@nationsfinest.org](mailto:Info@nationsfinest.org)

ELIGIBILITY RESTRICTIONS

Call for more information.

Ready For Life Host Homes

Ready for Life Foster Family Agency partners with families in Northern California to approve, train, and equip them to take foster children into their homes.

LOCATION

962 Maraglia St.  
Redding, CA 96002

CONTACT

Megan Preller  
(530)222-1826  
[www.readyforlife.net](http://www.readyforlife.net)

ELIGIBILITY RESTRICTIONS

Eligibility Restrictions: Open to youth ages 18-24 and homeless or on the verge of homelessness.

Redding Housing Authority

Operates City of Redding Housing Choice Voucher Program for rental assistance.

LOCATION

Redding Housing Division  
777 Cypress Avenue  
Redding, CA 96001

CONTACT

Steve Bade  
(530) 225-4048  
[mdavids@cityofredding.org](mailto:mdavids@cityofredding.org)

ELIGIBILITY RESTRICTIONS

Call for more information.





## MENTAL & PHYSICAL

### Dunamis Wellness - Mental Health Services

Provides general counseling services and other services to enhance the quality of clients' lives. Services focus on the whole person with an emphasis on improved mental, emotional, physical, spiritual and social well-being.

#### LOCATION

1475 Victor Avenue, Suite B  
Redding, CA 96003

#### CONTACT

Tracy Montgomery  
(530) 338-0087  
[info@dunamiswellness.com](mailto:info@dunamiswellness.com)  
<https://dunamiscenter.com>

#### ELIGIBILITY RESTRICTIONS

Open to all ages. Different insurances may cover different services.

### Hill Country Health and Wellness Center - Center of Hope

Provides integrated medical, dental, chiropractic and mental health services, where patients can find information, education, and services to keep them well.

#### LOCATION

1201 Industrial Street  
Redding, CA 96002

#### CONTACT

Bailey Hovis  
(530) 337-5750  
<https://www.hillcountryclinic.org>

#### ELIGIBILITY RESTRICTIONS

Open to everyone regardless of ability to pay.



## MENTAL & PHYSICAL

### North American Mental Health Services

Provides outpatient counseling for individuals and families who have Partnership Healthplan or Medicare/Medi-Cal. Offers medication management which includes Medication Assisted Treatment for those with substance use disorders.

#### LOCATION

1742 Oregon Street  
Redding, CA 96001

#### CONTACT

(530) 646-7269  
<https://namhs.com>

#### ELIGIBILITY RESTRICTIONS

Open to children, teens and adults with Partnership Healthplan or Medicare/Medi-Cal insurance.

### Shasta County HHSA - Adult Mental Health Services

Provides outpatient counseling, assessment and evaluation, case management, medication, social rehabilitation, and urgent care/crisis services for adults who struggle with persistent and severe mental illness.

#### LOCATION

2640 Breslauer Way  
Redding, CA 96001

#### CONTACT

Darby McAllister  
[hhsa@co.shastsa.ca.us](mailto:hhsa@co.shastsa.ca.us)  
(530) 225-5200  
<https://www.co.shasta.ca>

#### ELIGIBILITY RESTRICTIONS

Open to adults who need mental health or crisis services and meet the criteria of "medical necessity".







## CLOTHING

### Community Closet

The Community Closet is hosted by Redding Christian Fellowship's free Infant and Children's clothing exchange. You can donate clothing and receive an equal amount of infant and children's clothing in exchange. Sizes range from infants up to size 14 kids. Limited supply of Diapers and wipes may be available.

#### LOCATION

2157 Victor Avenue  
Redding, CA 96002

#### CONTACT

Naphtali Farley  
(530) 222-3425  
naphtalifarley@gmail.com

#### ELIGIBILITY RESTRICTIONS

Infant and children's clothing only. Sizes range from Infant up to size 14 kids. Limited supply of Diapers and wipes may be available.



### Northern Valley Catholic Social Service – Clothes That Work!

Clothes That Work! provides two complete interview-appropriate outfits including shoes, undergarments, makeup and accessories, and an additional three complete job-appropriate outfits after employment is found.

#### LOCATION

2400 Washington Avenue, 3rd Floor  
Redding, CA 96001

#### CONTACT

530-247-3320

#### ELIGIBILITY RESTRICTIONS

Call for more information.



## FINANCIAL

### Shasta County HHSA - General Assistance

Provides temporary cash aid to eligible adults with no children who do not qualify for other public assistance. Provides three months of assistance to eligible, employable adults, and longer-term assistance to eligible adults who have a temporary disability or who have a long-term disability and are awaiting Supplemental Security Income (SSI) approval.

#### LOCATION

2640 Breslauer Way  
Redding, CA 96001

#### CONTACT

Darby McAllister  
Hhsa@co.shastsa.ca.us  
(530) 225-5200

#### ELIGIBILITY RESTRICTIONS

For Shasta County residents 18 and up (and emancipated minors) with no or low income and no dependent children.



## TRANSPORTATION

### Life Cycles- Living Hope Bike Shop

Supports individuals with low income or at risk of being homeless. Offers low cost bikes, and low cost bike repairs, replacement tubes and minor tuning.

#### LOCATION

1043 State Street  
Redding, CA 96001

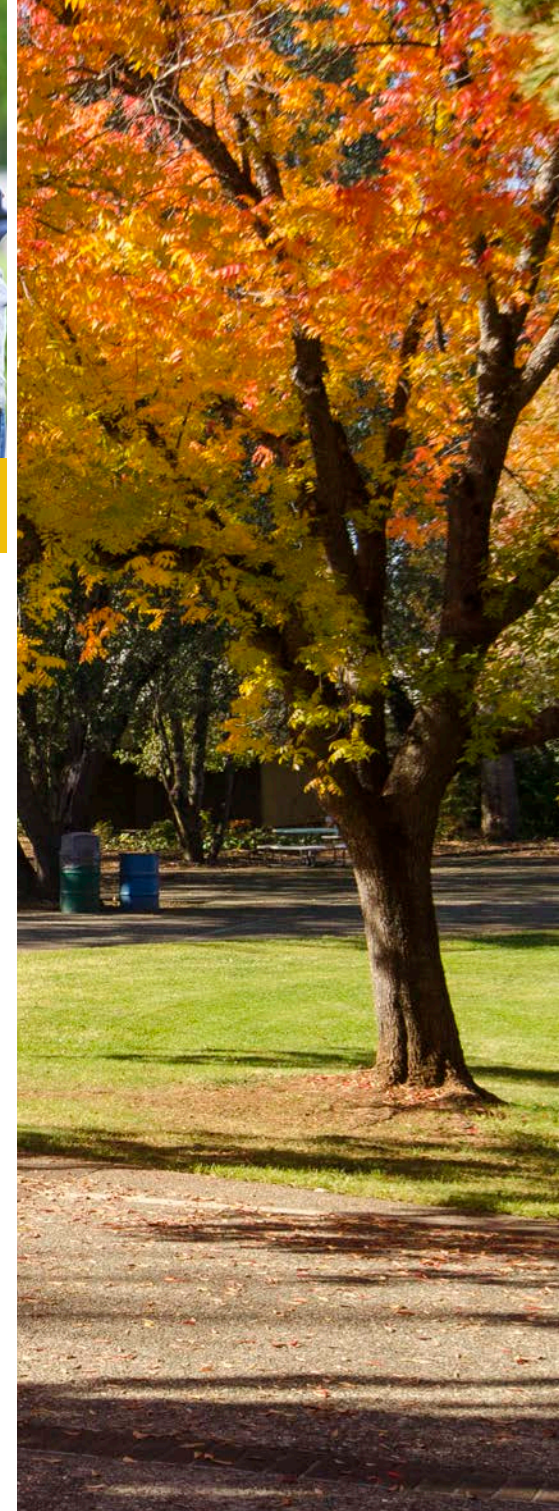
#### CONTACT

Michael Mojarro  
(530) 243-8066  
livinghoperedding@gmail.com

<https://www.livinghoperedding.com/life-cycles/>

#### ELIGIBILITY RESTRICTIONS

Open to those with low income or at risk of being homeless; must have a good bike lock. Monday through Thursday – bikes not offered on Wednesday.







TRANSPORTATION

Redding Area Bus Authority (RABA)

Provides local bus service and paratransit in Shasta County in the areas of Redding, Shasta Lake, and Anderson, and other parts of Shasta County. Buses are wheelchair accessible and provide racks for bicycles.

LOCATION  
1530 Yuba Street  
Redding, CA 96001

CONTACT  
(530) 241-2877  
<https://www.cityofredding.org/departments/redding-area-bus-authority>

ELIGIBILITY RESTRICTIONS  
Open to all ages.

Sage Stage Bus Transit

Provides intercity bus transit from Alturas to Reno, Redding and Klamath Falls with direct service to Reno (Airport, Amtrak, Greyhound, Downtown Reno), Redding (Medical Offices, Amtrak, Greyhound, Mt. Shasta Mall), and Klamath Falls (Shopping, Medical Offices, Amtrak).

LOCATION  
108 S. Main Street  
Alturas, CA 96101

CONTACT  
(530) 233-6410  
<https://sagestage.com/>

ELIGIBILITY RESTRICTIONS  
Open to all ages.

ShastaConnect Door-to-Door Service

Offers door-to-door service for anyone in need of a ride on Sundays only. This service is available for no charge, and serves Redding and surrounding areas, 33 square miles in total.

LOCATION  
37477 Highway 299 E  
Burney, CA 96013

CONTACT  
Jami Brinson  
(530) 226-3075  
[Ride@shastaconnect.org](mailto:Ride@shastaconnect.org)  
Dispatch Reservations  
(530) 226-3075  
<https://www.shastaconnect.org/>

ELIGIBILITY RESTRICTIONS  
Call for more information.

TEHAMA COUNTY RESOURCES



FOOD

CalFresh

Formerly Food Stamps, also known as SNAP, is a federal nutrition program that helps people with low or no income purchase healthy food. Benefits are issued on an Electronic Benefits Transfer (EBT) card to use at most grocery stores and farmers' markets.

LOCATION  
43 Hilltop Drive  
Redding, CA. 96003

CONTACT  
Jilmarie Bentley  
(530) 225-0182  
[jbentley@shastacoe.org](mailto:jbentley@shastacoe.org)

Aaron Steinmetz  
530-605-2683  
[asteinmetz@shastacoe.org](mailto:asteinmetz@shastacoe.org)

ELIGIBILITY RESTRICTIONS  
Dependent on family size and income, but all residents must be U.S. citizens and legal residents, or people with a qualified immigration status.

Salt Ranch

A nonprofit organization and ministry that provides meals multiples days per week at noon, and offer free meal delivery to Tehama County residents by appointment.

LOCATION  
12865 State Highway 99  
East Red Bluff, CA 96080

CONTACT  
Randy Dueck  
(530) 200-6871  
[randyfeliciadueck@yahoo.com](mailto:randyfeliciadueck@yahoo.com)  
<https://saltranch.org/>

ELIGIBILITY RESTRICTIONS  
Open to homeless, low income or anyone in need of a meal.







## FOOD

### Tehama County Food Bank – The Gleaners

Referred to as The Gleaners, distributes government surplus foods on a monthly basis for Tehama County residents with low income. Individuals/Families may pick up food at their closest location once per month.

#### LOCATION

1860 Walnut Street, Building A  
Red Bluff, CA 96080

#### CONTACT

(530) 529-2264  
tcfb@tcfb.net

<https://www.icarol.info/ResultDetails.aspx?org=2273&agencynum=14929632>

#### ELIGIBILITY RESTRICTIONS

Dependent on self-certified family size and gross income. A physical address must be provided by recipient.

### The Salvation Army

Provides emergency food Monday through Friday for emergency cases only.

#### LOCATION

940 Walnut St  
Red Bluff, CA 96080

#### CONTACT

(530) 527-8530  
Kit.Wetter@usw.salvationarmy.org  
[redbluff.salvationarmy.org](http://redbluff.salvationarmy.org)

#### ELIGIBILITY RESTRICTIONS

Open to Tehama County residents whose income is below 200% of the Federal poverty level and are experiencing a financial emergency.

## HOUSING

### Empower Tehama

Supports victims of domestic or intimate partner violence in Tehama County. Resources offered through Empower Tehama include emergency shelters, on-site transitional housing, and a rental assistance program.

#### LOCATION

1805 Walnut Street  
Red Bluff, CA 96080

#### CONTACT

24-Hour Crisis Hotline:  
(530) 528-0226  
Prevention Center: (530) 727-9423  
<https://empowertehama.org/domestic-violence-response>

#### ELIGIBILITY RESTRICTIONS

Any resident of Tehama County that is a victim of domestic or intimate partner violence, or anyone in danger of experiencing these forms of abuse.

### PATH – Pathways Men’s Transitional Housing

Pathways is a transitional living program, specifically designed to provide a safe and sober living environment to help homeless men become stable and self-sufficient.

#### LOCATION

P.O. Box 315  
Red Bluff CA 96080

#### CONTACT

Jimmy Rolson  
(530) 646-7399  
[info@redbluffpath.org](mailto:info@redbluffpath.org)  
<http://redbluffpath.org/tehama-path-rehousing/>

#### ELIGIBILITY RESTRICTIONS

To qualify you must be homeless, clean & sober, and willing to make the changes necessary to become self-sufficient.

### PATH – Rapid Re-Housing

Offers help with searching for housing, application fee and deposit assistance, moving assistance, and links to other resources.

#### LOCATION

P.O. Box 315  
Red Bluff CA 96080

#### CONTACT

Jenifer Ragsdale  
(530) 727-7191  
[info@redbluffpath.org](mailto:info@redbluffpath.org)  
<http://redbluffpath.org/path-tehama-programs-womens/>

#### ELIGIBILITY RESTRICTIONS

Recipients must provide homeless Documentation (must be literally homeless as defined by HUD), must be low-income, and must be seeking housing in Tehama County.





## HOUSING

### **PATH – SALE House**

Offers sober living transitional home that serves homeless single women and moms with children.

#### **LOCATION**

P.O. Box 315  
Red Bluff CA 96080

#### **CONTACT**

Jenifer Ragsdale  
(530) 727-7191  
info@redbluffpath.org

<http://redbluffpath.org/path-tehama-programs-womens/>

#### **ELIGIBILITY RESTRICTIONS**

To qualify you must be homeless, clean & sober, and willing to make the changes necessary to become self-sufficient.

### **Tehama County Community Action Agency**

Connects low-income families with resources designed to help get safe, permanent housing. Working together with HUD and other agencies, when available, we may be able to refer people to programs that help with security deposits, rent, utility payments and low-income housing.

#### **LOCATION**

12865 State Highway 99  
East Red Bluff, CA 96080

#### **CONTACT**

(530) 527-6159  
caainfo@tcdss.org

<https://tehamacountycaa.com/housing-assistance>

#### **ELIGIBILITY RESTRICTIONS**

Call for more information.

## MENTAL & PHYSICAL

### **Tehama County Health Services Agency – Behavioral Health**

Provides behavioral health resources via a Community Crisis Response Unit, medication support, and outpatient support for children and adults.

#### **LOCATION**

1850 Walnut Street Red Bluff, CA 96080

#### **CONTACT**

(530) 527-8491

<https://www.tehamacohealthservices.net/administration/about-us/behavioral-health/>

#### **ELIGIBILITY RESTRICTIONS**

Open to Tehama County residents and Medi-Cal beneficiaries. Eligibility is determined through an assessment process to identify if an individual has a severe and persistent mental illness or is a child with severe emotional disturbance.

### **Tehama County Health Services Agency – Medical Clinic**

Provides comprehensive healthcare for individuals who lack access to medical services due to economic or social barriers. Offering a full range of quality services.

#### **LOCATION**

1850 Walnut Street Red Bluff, CA 96080

#### **CONTACT**

(530) 527-0350

<https://www.tehamacohealthservices.net/services/medical-clinic/>

#### **ELIGIBILITY RESTRICTIONS**

Open to Tehama County residents. The Clinic accepts most insurance including Medi-Cal, Medicare, CMSP, self-pay and private insurance.

### **Tehama County Health Services Agency – Substance Use Recovery**

Provides substance use recovery services via education, assessment, outpatient care, gender-specific treatment groups, co-occurring substance use and behavioral treatment groups, care coordination, recovery groups, and dual diagnosis support groups.

#### **LOCATION**

1850 Walnut Street Red Bluff, CA 96080

#### **CONTACT**

(530) 527-8491

<https://www.tehamacohealthservices.net/administration/about-us/behavioral-health/>

#### **ELIGIBILITY RESTRICTIONS**

Open to Tehama County residents who are struggling with substance abuse.





## MENTAL & PHYSICAL

### Victor Community Support Services (VCSS)

An outpatient specialty mental health services program that serves youth and families in homes, schools, community, office based and telehealth environments with highly trained therapists and paraprofessionals.

#### LOCATION

1360 East Lassen Avenue  
Chico, CA 95973

#### CONTACT

(530) 840-2000

<https://www.victor.org/red-bluff/?navigateByCounty-services-selector=%2Fprograms-by-location%2FSolano>

#### ELIGIBILITY RESTRICTIONS

Open to Tehama County based families.



## TRANSPORTATION

### Medical Transportation Services (METS)

A transportation service program utilizing volunteer drivers to transport patients to and from medical appointments in Tehama County and surrounding regions.

#### LOCATION

1509 Schwab Street  
Red Bluff, CA 96080

#### CONTACT

Sharon Young  
*General Manager*  
(530) 527-0597  
[sharon.young2015@sbcglobal.net](mailto:sharon.young2015@sbcglobal.net)

#### ELIGIBILITY RESTRICTIONS

Open to Tehama County residents who are ambulatory (no mobility devices) and can show that they have no other means of transportation available; Babies, children, and youth under the age of 18 may ride with an adult (one must provide own car seat for baby or young child).



### Tehama Rural Area Express (TRAX)

A fixed route bus service connecting Red Bluff, Corning, Los Molinos, Gerber, Tehama and places in between. City routes are available in Red Bluff and Corning. Regional routes are available along the Highway 99E & 99W corridors which connect to city routes and the Diamond Express to Shasta College Tehama Campus.

#### LOCATION

1509 Schwab Street Red  
Bluff, CA 96080

#### CONTACT

Sharon Young  
*General Manager*  
(530) 527-0597  
[sharon.young2015@sbcglobal.net](mailto:sharon.young2015@sbcglobal.net)  
<https://taketrax.com/>

#### ELIGIBILITY RESTRICTIONS

Open to all ages.

## INTERMOUNTAIN-EAST SHASTA RESOURCES



## FOOD

### Circle of Friends

Circle of Friends is a safe and welcoming place to make new friends and find support and encouragement for our efforts to cope with life's challenges. We offer mental wellness support, weekly packets of boredom busters, clothing assistance, and food distribution.

#### LOCATION

36987 Hwy 299  
Burney, CA 96013

#### CONTACT

Lynn Erickson  
(530) 335-4222  
<https://www.hillcountryclinic.org/our-locations/#circle-of-friends>

#### ELIGIBILITY RESTRICTIONS

Open to anyone facing mental health challenges or those looking to learn more.

### Burney Food Co-Op

Food co-op provides food as needed. For those who join the co-op, meals and food/groceries are available for pick-up twice a month on a regular basis.

#### LOCATION

36910 Main Street  
Burney, CA 96013

#### CONTACT

John Calzia  
(530) 515-1384

#### ELIGIBILITY RESTRICTIONS

Required to be sober while picking up food.





## CLOTHING

### Circle of Friends

Circle of Friends is a safe and welcoming place to make new friends and find support and encouragement for our efforts to cope with life's challenges. We offer mental wellness support, weekly packets of boredom busters, clothing assistance, and food distribution.

#### LOCATION

36987 Hwy 299  
Burney, CA 96013

#### CONTACT

Lynn Erickson  
(530) 335-4222

<https://www.hillcountryclinic.org/our-locations/#circle-of-friends>

#### ELIGIBILITY RESTRICTIONS

Open to anyone facing mental health challenges or those looking to learn more.



## MENTAL & PHYSICAL

### Circle of Friends

Circle of Friends is a safe and welcoming place to make new friends and find support and encouragement. Recognizing that we all have mental health, our doors are open to any person experiencing mental health challenges and/or their family members, as well as anyone looking to heal, grow, and learn more about themselves and mental wellness.

#### LOCATION

36987 Hwy 299  
Burney, CA 96013

#### CONTACT

Lynn Erickson  
(530) 335-4222

<https://www.hillcountryclinic.org/our-locations/#circle-of-friends>

#### ELIGIBILITY RESTRICTIONS

Open to anyone facing mental health challenges or those looking to learn more.



## TRANSPORTATION

### Shasta Connect Door-to-Door Service

For anyone living in rural Shasta County and outside the RABA service area. Alternatively, trips into the region's urban area, which is served by RABA or other transportation services, can be provided depending on eligibility. Monday -Friday (\$3/one-way trip).

#### LOCATION

200 Mercy Oaks Drive  
Redding, CA 96003

#### CONTACT

Jami Brinson  
(530) 226-3075  
[Jami.Brinson@dignityhealth.org](mailto:Jami.Brinson@dignityhealth.org)

<https://www.shastacconnect.org/schedule-a-ride/>

Download the app

#### ELIGIBILITY RESTRICTIONS

Offered to those located outside the RABA service area or where trips are to/from the RABA service area.



## BOOKS

### Shasta Public Libraries - Burney

Provides a collection of information, public computers, internet access, wifi, and the following:

- Mobile Hotspots for check out
- Reference services for jobs
- Free online resources
- Practice DMV tests
- Adult online learning program - available daily from 1pm-10pm
- Free Blood Pressure Toolkits
- DIY Home Energy Saving Toolkits

#### LOCATION

37116 Main Street  
Burney, CA 96013

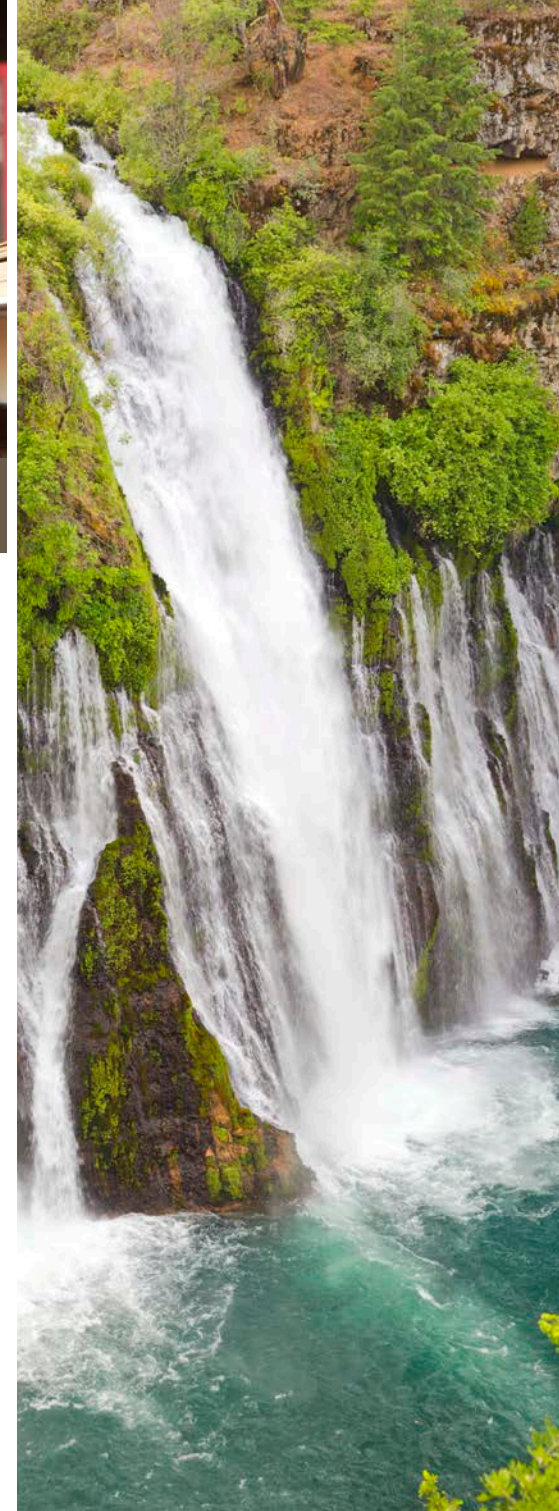
#### CONTACT

Brad Shackelford  
(530) 335-4317 or (530) 245-7252

<http://www.shastalibraries.org/>

#### ELIGIBILITY RESTRICTIONS

Open to all ages.





# TRINITY COUNTY RESOURCES



## FOOD

## FOOD

## HOUSING



### Weaverville Community Food Cupboard

We often draw people who have been alienated from other churches and those seeking a spiritual home. We believe the Church's mission is to change lives - individually, systemically, and globally. We work to make transformation possible while also trusting in God's grace.

#### LOCATION

Trinity Congregational Church  
735 Main St.  
Weaverville, CA 996093

#### CONTACT

Ranee Kletchka  
(530) 623-3101

<https://www.tccweaverville.org/>

#### ELIGIBILITY RESTRICTIONS

Family Size 1-3 people get 1 bag, 4-8 people get 2 bags.

### Mountain Chapel Soup Kitchen

Our aim is to provide opportunity for people to encounter the transforming love and power of the Holy Spirit through the ministries of Mountain Chapel. Our hope is that everyone would not only find a ministry that meets their needs but also find a place to plug in and serve to help facilitate this same life-changing ministry for others.

#### LOCATION

60 Oak Ridge Dr.  
Weaverville, CA 96093

#### CONTACT

Brandon or Denese  
(530) 623-3933

<https://www.mountainchapelca.com/mtchapel/soup-kitchen.html>

#### ELIGIBILITY RESTRICTIONS

No Criteria for Tinity County residents - deliveries in town (Weaverville), Douglas City Drop Point at the DC Store, or serve walk-ups.

### Trinity County Food Bank

The Trinity County Food Bank distributes food commodities to low-income families in the area in which they live, on a first come, first served basis. We are a nonprofit organization focused on helping make the world around us a better, happier place.

#### LOCATION

51B Memorial Drive  
Weaverville, CA 96093

#### CONTACT

Jeff England  
(530) 739-0983

<http://trinitycountyfoodbank.org/>

#### ELIGIBILITY RESTRICTIONS

In order to be eligible for our programs, you must be a full time resident of Trinity County, California and meet the Emergency Food Assistance Program (TEFAP) 2021 income guidelines USDA Commodities Program.

### Solid Rock Christian Fellowship Soup Kitchen

Solid Rock Christian Fellowship Hayfork, is a non-denominational church. Pastor Keith Wright and his wife Trish have pastored for 40 years. They serve anyone and everyone who comes to eat at the soup kitchen, regardless of anything. If you show up, they will serve you.

#### LOCATION

7250 Hwy 3  
Hayfork, CA 96041

#### CONTACT

Rob Collins  
(530) 227-3328

<https://www.facebook.com/Solid-Rock-Christian-Fellowship-Hayfork-112027917142342/>

#### ELIGIBILITY RESTRICTIONS

None. They serve everyone Mondays from 11am-1pm.

### Human Response Network (HRN)

The Human Response Network is a private nonprofit agency that assists with housing, homeless services, homeless shelters for persons residing in Trinity County. Assists with transitional housing rental assistance for homeless and at risk of homeless persons residing in Trinity County.

#### LOCATION

PO Box 2370  
111 Mountain View St  
Weaverville, CA 96093

#### CONTACT

Lauren Caughan  
(530) 623-2024

<https://www.hrntrinity.org/>

#### ELIGIBILITY RESTRICTIONS

Call for more information.





## MENTAL & PHYSICAL

### Trinity Co. Behavioral Health Services Crisis Line

Crisis Assessment and referral to other services (all persons are eligible) Individual and group counseling for adults, teens, and children Case Management and Medication Services Adolescent Mental Health/ Substance Abuse Treatment.

#### LOCATION

1450 Main Street  
Weaverville, CA 96093

#### CONTACT

(520) 623-5708 or (888) 624-5820

<https://www.trinitycounty.org/Behavioral-Health>

#### ELIGIBILITY RESTRICTIONS

The Behavioral Health Crisis Team is available to assist in crisis management 24 hours a day, 7 days a week.



## CLOTHING

### Human Response Network (HRN)

The Human Response Network is a private nonprofit agency that serves all the residents of Trinity County, CA.

#### LOCATION

PO Box 2370  
111 Mountain View St  
Weaverville, CA 96093

#### CONTACT

Lauren Caughan  
(530) 623-2024

<https://www.hrntrinity.org/>

#### ELIGIBILITY RESTRICTIONS

Call for more information.



## FINANCIAL

### Human Response Network (HRN)

The Human Response Network is a private nonprofit agency that serves all the residents of Trinity County, CA.

#### LOCATION

PO Box 2370  
111 Mountain View St  
Weaverville, CA 96093

#### CONTACT

Lauren Caughan  
(530) 623-2024

<https://www.hrntrinity.org/>

#### ELIGIBILITY RESTRICTIONS

Call for more information.



## TRANSPORTATION

### Trinity Transit

Trinity Transit operates “intercity” fixed routes Monday through Friday with Weaverville at the hub – the Willow Creek Line, the Redding Line, the Hayfork Line and the Lewiston Line.

#### LOCATION

31301 State Hwy 3 PO Box  
2490 Weaverville CA 96093

#### CONTACT

Steve Young  
(530) 623-5438

<https://trinitytransit.org/>

#### ELIGIBILITY RESTRICTIONS

Trinity Transit is a public transportation service managed by the Trinity County Department of Transportation.

Offers package delivery: 25lbs or less, \$3 minimum charge per item, per bus route. Restrictions apply – view information page online.



## GENERAL

### California Tribal TANF Partnership (CTTP) Trinity Site

The tribal Temporary Assistance for Needy Families (TANF) programs serves Native Americans and is under the governing body of Robinson Rancheria of Pomo Indians.

#### LOCATION

1313 S. Main Street, Sp B  
Weaverville, CA 96093

#### CONTACT

Tina Lynch-Parnell  
(530) 623-5006

<https://cttp.net/trinity>

#### ELIGIBILITY RESTRICTIONS

Empowering Native families to self-sufficiency through a path of tribal cultures, education, wellness and employment.







### **REDDING CAMPUS**

11555 Old Oregon Trail  
Redding, CA 96049-6006  
(530) 242-7500

### **HEALTH SCIENCES & UNIVERSITY CENTER**

1400 Market Street  
Redding, CA 96001  
(530) 339-3600

### **TEHAMA CAMPUS**

770 Diamond Avenue  
Red Bluff, CA 96080  
(530) 242-7750 | Ext. 4

### **INTERMOUNTAIN CAMPUS**

37581 Mountain View Road  
Burney, CA 96013  
(530) 242-7750 | Ext. 4

### **TRINITY CAMPUS**

30 Arbuckle Court  
Weaverville, CA 96093  
(530) 242-7750 | Ext. 4