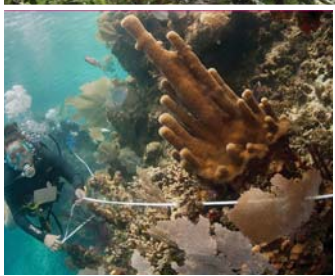


Apply Now!



SPACE IS LIMITED!

Discover Islands of *Wonder!*

FIJI

GLOBAL EXPEDITION PROGRAM

through **Shasta College**

Join us and take part in:

- Being involved in the creation of the first large national park in Fiji
- Diving in the largest bay in the South Pacific
- Exploring previously unsurveyed reefs
- Spending time with local Fijian communities and learning about the ecology of Pacific Islands

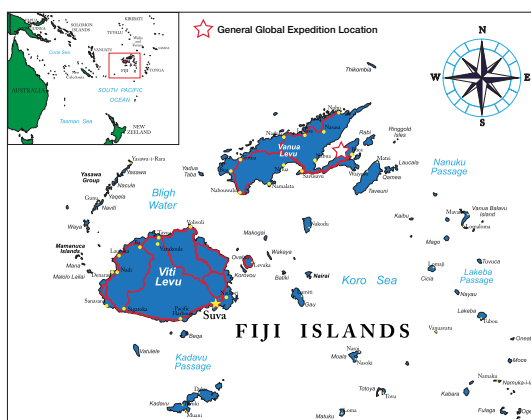
Expedition dates:

June 30 - July 18, 2019

1-2 days may be added on either end depending on travel, with online coursework to be done before and after expedition dates.

Taking applications now - **Space is limited!**

Apply today and reserve your spot!



For more information, go to
www.ShastaCollege.edu/GlobalEd

or contact the Global Education Center
(530) 242-7626 - Room 2308
studentlife@shastacollege.edu

Partnering with



Shasta College

www.shastacollege.edu

Shasta College is an equal opportunity educator and employer.

Global Education Center

(530) 242-7626



GLOBAL EXPEDITION PROGRAM

ABOUT THE PROGRAM

The expedition is in association with Operation Wallacea, a research-based conservation organization that works to preserve biodiverse regions in coordination with teams of student volunteers working alongside academic researchers. This expedition will give students the opportunity to get a taste of some of stunning island forest and coral reef ecosystems of Fiji and help with data collection for important biodiversity assessment surveys.

This Fiji Global Expedition Program is part of a course combination requiring course enrollment and active involvement in a specific Shasta College course combination that focuses on conservation biology, tropical forest ecology, coral reef ecology, and geography of the region and people.

BENEFITS

Joining the Shasta College Fiji Global Education Program will provide you with the opportunity to:

- Gain important field skills while earning college credit.
- Study rainforest ecology, coral reef ecology, and human geography online and then first hand in the field in Fiji on the islands of Vanua Levu and Taveuni.
- Assist with real conservation research lead by experienced scientists with the research-based conservation organization, Operation Wallacea (OpWall) in safe, professionally operated learning environments.
- Research topics include assessing the impact of invasive mongoose populations on native reptile, amphibian, and ground bird populations, analyzing the forest structure while estimating forest carbon stores, and searching for new or rare species.
- Receive practical training in forest and marine organism identification and survey skills.
- Experience Fijian culture by learning traditional crafts, eating local Fijian foods, and connecting with the people on a personal level.
- Snorkel and/or scuba dive next to beautiful, species rich coral reefs, many of which are currently unexplored in Natewa Bay.
- Gain scuba diving certification (PADI).
- Hike and swim to secluded island waterfalls.
- Build up your resume and help make your university applications stand out.
- Gain 6-8 units (UC/CSU transferable for General Education).
- Apply for study abroad scholarships (you may qualify for \$500 to \$2000!).
- Utilize Shasta College bus transportation to and from the airport.
- Have access to on-sight medical professionals and receive travel insurance coverage.
- Make lasting friendships!

STEPS TO APPLY

STEP 1: Complete the Shasta College Global Expedition

Application at www.ShastaCollege.edu/GlobalEd or pick one up at the Global Education Center located in room 2308 (same building as the bookstore).

STEP 2: Submit your initial \$250 deposit to the Business Office along with the deposit slip included in the application. Bring your deposit receipt & application to the Global Education Center in Room 2308 to hold your spot on the trip!

Application and Deposit deadline - February 14, 2019

STEP 3: Apply to Shasta College! www.ShastaCollege.edu.

High School Students need to complete a concurrent enrollment form and will be able to ENROLL FOR FREE!

STEP 4: Register for Financial Aid and Apply for Scholarships* (strongly recommended). Many forms of aid exist that may be applied to this expedition program.

STEP 5: Enroll in the 2018 Expedition Courses (once enrollment for Summer classes begin)

COSTS

The total cost for this expedition program will be approximately \$4,000 but could vary depending on the number of students who sign up, the price of flights, the price of Shasta College credits/tuition*, travel gear, vaccinations, and passport costs. We will accept students on a first-come, first-served basis, so please do not delay as the program may fill quickly. Only an application form with a receipt for the \$250 deposit will reserve your space in the program. **Deposits need to be made to the Business Office inside the 100 building along with the deposit slip included in the application.**

*Enrollment fees for courses will be waived for college students who qualify for the California College Promise Grant (CCPG), as well as high school students. Those students who apply for and receive the CCPG will still be required to pay the health and campus center fees totaling \$40.50. The total amount for the expedition will be split into payments with the first payment being the deposit of \$250 and subsequent payments made to Operation Wallacea. Substantial scholarships are available (\$500-\$2000).

CONTACT INFORMATION

Global Education Center
(530) 242-7626 - Room 2308
studentlife@shastacollege.edu
www.ShastaCollege.edu/GlobalEd