



**MEETING OF THE MEASURE H  
CITIZENS' BOND OVERSIGHT COMMITTEE**

**SHASTA-TEHAMA-TRINITY JOINT COMMUNITY COLLEGE DISTRICT  
SHASTA COLLEGE MAIN CAMPUS – LIBRARY ROOM 207  
11555 OLD OREGON TRAIL, REDDING, CA 96003**

**THURSDAY, APRIL 16, 2026  
5:00 PM**

**AGENDA**

---

1. OPEN SESSION

- 1.1 Call to Order
- 1.2 Welcome New Members

Jackson Richards	Student Member
------------------	----------------

- 1.3 Roll Call

2. CALL FOR REQUESTS FROM THE AUDIENCE TO SPEAK TO ANY ITEM ON THE AGENDA

3. APPROVAL OF MINUTES (*Action Item*)

- 3.1 Approval of the January 15, 2026 Meeting Minutes (*Attached*)

4. INSTITUTIONAL REPORTS

- 4.1 Quarterly Bond Financial Overview (*Attached*)
- 4.2 Update on Bond Projects

5. DISCUSSION ITEMS

- 5.1 CBOC Member whose term expires 7/12/2026:

Todd Jones	Taxpayer's Association
------------	------------------------

- 5.2 Election of Chair and Vice Chair for 2026-2027 (starting July 1, 2026) (*Action Item*)

6. ANNOUNCEMENTS

- 6.1 Next meetings of the committee:
  - July 16, 2026
  - October 15, 2026

7. PUBLIC COMMENTS

- 7.1 Comments from the audience:

8. ADJOURNMENT (*Action Item*)

**Persons with disabilities needing assistance such as listening devices or other accommodations, please email [BondOffice@shastacollege.edu](mailto:BondOffice@shastacollege.edu) as soon as possible so arrangements can be made.**



**MEETING OF THE MEASURE H  
CITIZENS' BOND OVERSIGHT COMMITTEE  
UNAPPROVED  
THURSDAY, JANUARY 15, 2026  
MINUTES**

The Measure H Citizens' Bond Oversight Committee held their regular quarterly meeting on Thursday, January 15, 2026 in the Library, Room 207 on the Shasta College Main Campus located at 11555 Old Oregon Trail, Redding, California.

**1. OPEN SESSION**

**1.1 CALL TO ORDER**

The meeting was called to order by Raymond Nicholas at 5:00 p.m.

**1.2 Roll Call**

COMMITTEE MEMBERS PRESENT		AREA OF REPRESENTATION
X	Robert Adams	At-Large Representative
X	Star Alfaro	College Support Organization
	Todd Jones	Taxpayers' Association
X	Bruce Kilpatrick	At-Large Representative
	Michael Logan	Business Representative
X	Raymond Nicholas	At-Large Representative
	Vacant	Student Representative
X	Staci Wadley	Senior Citizens' Representative

DISTRICT STAFF & GUESTS	
X	Dr. Frank Nigro, Superintendent/President
X	Becky McCall, Asst. Superintendent/VP Administrative Services
X	Andy Brown, Director of Physical Plant
X	Theresa Markword, AVP of Facilities & Capital Construction
X	Magan Kleinman, Bond Program Department Fiscal Analyst (Recorder)

**2. CALL FOR REQUESTS FROM THE AUDIENCE TO SPEAK TO ANY ITEM ON THE AGENDA**

There were no requests.

**3. APPROVAL OF MINUTES** (*Action Item*)

**3.1 Approval of the October 16, 2025 Meeting Minutes**

It was moved by Ms. Alfaro and seconded by Mr. Kilpatrick to approve the minutes.

*The vote was five (5) to zero (0) in favor of approving the October 16, 2025 meeting minutes as presented. There was one (1) abstention from Mr. Adams as he was not in attendance at the October 16, 2025 meeting.*

**4. INSTITUTIONAL REPORTS**

**4.1 Quarterly Bond Financial Overview**

Ms. Markword provided a PowerPoint presentation (attached hereto as Exhibit A) to review highlights of the Financial Overview document. It was noted that new quarterly interest of \$440,000 has been posted and that we are approaching \$6 million in overall interest for the bond. In terms of bond activity for the quarter, there was \$5.5 million in expenditures with no budget increases or decreases.

Ms. Markword mentioned that General Obligation Bond Measure A passed in 2002 and is nearing its expiration date. The District refunded three of the Measure A issuances and saved taxpayers \$3.5 million which shortens the term of the overall bond. This has provided an opportunity for Shasta College to explore pursuing a new general obligation bond.

Ms. Markword began discussing the future Facilities Improvement Measure and how the needs for the Measure were identified. She began by explaining the Facility Condition Index (FCI). The FCI is used to assess the condition of campus buildings and indicate the need for repair. The higher the FCI score the greater the need is for repair, and ultimately replacement, of buildings. The FCI assessment was conducted in 2025 and compared to the prior FCI assessment completed in 2022, our score has improved. In 2022, Shasta College's FCI score was 86.59% but in 2025 the index improved and we are now at 74.12% due to renovations that have been completed. As we make renovations to our buildings, the FCI score will decrease which indicates the improvement to District facilities. This also gives the state an opportunity to understand the system-wide need for scheduled maintenance money and advocate for it during the state's budget development process. At times the allocation is retracted, as it has been in previous years.

Ms. Alfaro asked if the FCI score included new buildings that did not exist prior to 2022. Ms. Markword responded affirmatively stating that the score includes those buildings as well as some that were already built in 2022. Ms. Wadley inquired as to how Shasta College compares with other colleges. Ms. Markword responded that unfortunately the Chancellors Office does not publish a comparison report and that communication regarding other colleges has come from only word of mouth. Dr. Nigro commented that it

would be useful to see how our scores compare to UC and CSU schools. Ms. Markword continued with further information regarding FCI scores and that the FCI informs the District with data points on what needs to be improved and the priority in which projects should be completed.

The District also has an Annual Area Plan Initiative process through which departments can contribute proposals to see if the District is able to fund those specific improvements. Based on this process the District is also able to determine which projects are suitable for bond funding. Program reviews, as well as staff and student surveys, are also used to identify potential areas of improvement and if funding those improvements with bond funds is appropriate. This process has helped us to identify the District's needs for new bond funding and the areas of improvement to be focused on for the new Facilities Improvement Measure. Ms. Markword then extended an invitation to attend the following week's Board of Trustees meeting as Jon Isom from Isom Advisors, the District's consultant, will be sharing information about polling results for the upcoming potential bond measure.

#### 4.2 Bond Projects Update

Ms. Markword provided updates regarding the status of Bond projects via the Powerpoint presentation. Significant visible progress on multiple buildings and outdoor spaces is improving student experience and administrative functionality. The following projects were discussed:

- **800 Building Renovation:** The 800 Building Renovation is 65-70% complete. All new entry storefronts and windows were added at the west entry. In the new lecture hall, the orientation of the seating has changed and Solatubes have been added to bring in natural light. The seating is expected to be installed during the first two weeks of March. The student lounge will also be furnished and faculty offices will also have Solatubes installed to provide natural light. Currently, tile is being installed in the restrooms. The Japanese Cultural Society donated seven Japanese cherry trees (Sakuras) which have been planted and are expected to bloom this spring. The quad area outside of the 800 Building has been remodeled with new landscaping and new outdoor furniture will be delivered soon. Landscaping near the parking lot has also been completed and new ADA-compliant sidewalks are making access easier for all students and improving safety.

Dr. Nigro asked if the mildly sloped floor in the lecture hall is still ADA-compliant. Ms. Markword responded affirmatively and that handrails have also been added. Dr. Nigro added that this helps to improve classroom accessibility as previously the only space available for students with physical disabilities was the back of the lecture hall. Mr. Kilpatrick asked if students use e-bikes on campus and Mr. Brown responded the students do not usually use e-bikes on campus but they do use them on the roadways.

- **700 Building Renovation:** Recently, new windows have been added on the second floor and many areas in the building will have natural light. The second floor hallway glass will be frosted in order to continue having natural light but also provide a more pleasing aesthetic. A French drain was added to the east side of the building.

- **1600 Building Fire Lane:** Sidewalks around the building were added recently. During this process the original 1967 waterline was replaced and isolation valves were added to enable water shut off in specific areas. The fire lane on the west side was reworked to preserve existing strawberry trees. A quad project is also slated to be done that will blend with the landscaping in this area. More information on that project will be available soon.
- **Greenhouse Renovation:** The original greenhouse was built in 1975. While the structure itself is still very sound, the outside of the greenhouse had peeling fiberglass. As a result, the outside of the greenhouse was re-skinned and new doors and windows were added. The electrical wiring was upgraded, and a new sink and new plumbing were also added. New Wi-Fi thermostats were installed to optimize the temperature inside the greenhouse.

## 5. DISCUSSION ITEMS

### 5.1 Review of Financial and Performance Audits

The Financial Audit looks at the manner in which expenditures are accounted for in the financial statements and related processes. Ms. Markword explained that the 2024-2025 financial audit came back clean with no findings.

The Performance Audit reflects that we are following all spending guidelines for the Measure H bond. The auditors are looking for compliance with government regulations, and that we are spending Bond funds on projects that were approved by the voters. The auditors evaluated approximately \$13.45 million in expenditures using random sampling and the audit came back clean with no exceptions. Of note, the auditors tested approximately 85% of the total expenditures of the bond, which is an unusually large sample compared to 35% of expenditures in previous years.

The committee had no questions and were satisfied with the audits as presented.

### 5.2 2025 Annual Report Development

Ms. Markword explained that the Annual Report summarizes everything we have done for the year, what we did at each meeting and any membership changes. The report also includes a Bond Program summary, a year-end snapshot of the Financial Overview, and a review of the Financial and Performance Audit results. Ms. Markword inquired if there were any comments or requested changes to the draft CBOC Annual Report previously distributed to the committee. There were no comments or changes. Ms. Markword then explained the draft Annual Report will be converted into its final version, and it will be presented to the Shasta College Board of Trustees at its next regular meeting.

Mr. Adams motioned to accept the Annual Report as presented. Ms. Wadley seconded the motion. There was no discussion.

*The vote was five (5) to zero (0) in favor of approving the 2025 CBOC Annual Report as presented.*

## 6. ANNOUNCEMENTS

### 6.1 Future meetings of the committee (5:00 p.m.):

- April 16, 2026
- July 16, 2026

The potential for touring newly renovated buildings on main campus during the upcoming April or July meeting was discussed. Dr. Nigro thanked the committee for their service and added that an on-campus event, Culture Fest, will be held earlier in the day on April 16, 2026. He extended an invitation to the CBOC members to attend if interested.

Ms. Markword noted that Jackson Richards, who is also the Student Senate President and Board of Trustees student representative, will be joining the committee as the CBOC student representative in April.

## 7. PUBLIC COMMENTS

### 7.1 Comments from the audience

No comments were received.

## 8. ADJOURNMENT

It was moved by Mr. Kilpatrick and seconded by Mr. Adams to adjourn the meeting.

*The vote was five (5) to zero (0) in favor of adjournment.*


Mr. Nicholas adjourned the meeting at 5:41 p.m.

Submitted by:

*Magan Kleinman*

Magan Kleinman  
Official Recorder


# EXHIBIT A



## Shasta College

### Measure H Bond Projects & Capital Construction Update

Presented to the  
**Citizens' Bond Oversight Committee**  
1/15/2026



1

## Financial Overview Highlights

Shasta-Tehama-Trinity Joint Community College District  
Measure H General Obligation Bonds


Cumulative Recap of Bond Activity  
September 7, 2017 - December 31, 2025

Bond Income/Outflow	
<b>Tax Exempt Bonds</b>	
Bond Sales Series A (9/7/2017)	\$ 50,000,000
Series A Net Issuance Costs	(208,359)
Bond Sales Series B (10/3/2019)	20,000,000
Series B Issuance Costs	(119,800)
Bond Sales Series C (12/9/2020)	10,000,000
Series C Issuance Costs	(53,788)
Refunded 2009A/2008A Bonds	(7,987,268)
Additional Funds from Other Sources	27,809,345
Net Available Funds for Projects	\$ 99,440,110
Encumbrances	(2,504,065)
Project Expenditures to Date	(97,658,673)
Budget Remaining	(1,784,145)
Ending Available Funds for Projects	\$ (2,506,773)
<b>Taxable Bonds</b>	
Bond Sales Series B-1 (10/3/2019)	\$ 20,000,000
Series B-1 Issuance Costs	(188,882)
Bond Sales Series C-1 (12/9/2020)	\$ 20,000,000
Series C-1 Issuance Costs	(166,450)
Bond Sales Series D (6/27/2023)	19,000,000
Series D Issuance Costs	(184,964)
Additional Funds from Other Sources	2,406,229
Net Available Funds for Projects	\$ 60,845,934
Encumbrances	(4,527,088)
Project Expenditures to Date	(28,599,012)
Budget Remaining	(14,942,528)
Ending Available Funds for Projects	\$ 12,777,305

Interest Proceeds for Future Allocation (through 9/30/25)				
Fiscal Year	Tax Exempt Bonds	Taxable Bonds		Total Interest Proceeds
		GO Bonds	MMTC Interest	
2017-2025	\$ 3,027,826	\$ 2,327,052	\$ 139,137	\$ 5,494,015
<b>2025-2026</b>	<b>184,444</b>	<b>255,799</b>	-	<b>440,243</b>
TOTAL	\$ 3,212,269	\$ 2,582,851	\$ 139,137	\$ 5,934,257

Total Monthly Expenditures (December 2025): \$1,120,248  
Total Quarterly Expenditures: \$5,526,681



2

# Financial Overview Highlights *(continued)*

**TAX EXEMPT BONDS: Cumulative Recap of Project Budgets, Additional Revenues, Encumbrances and Expenditures**

Active Projects	Current Budget	Funds from Other Sources	Bond Project Reserve Alloc.	Total Budget	Encumbered but not Expended	Expenditures to Date	Budget Remaining
19-017 Solar Project - East Lot	6,400,000	0	500,000	6,900,000	274,977	6,624,743	280
19-001 200 Building (Library) Renovation	7,515,030	15,589,000 (6)		23,104,030	170,244	22,787,781	146,005
20-003 800 Building Renovation	6,267,700	5,070,000 (6)		11,337,700	2,058,844	7,640,956	1,637,860
<b>Total Tax Exempt Bonds</b>	<b>\$74,137,538</b>	<b>\$27,809,345</b>		<b>\$101,946,883</b>	<b>\$2,504,065</b>	<b>\$97,658,673</b>	<b>\$1,784,145</b>

**TAXABLE BONDS: Cumulative Recap of Project Budgets, Additional Revenues, Encumbrances and Expenditures**

Active Projects	Current Budget	Funds from Other Sources	Bond Project Reserve Alloc.	Total Budget	Encumbered but not Expended	Expenditures to Date	Budget Remaining
Measure H General Expenses (Taxable Series Expenditures)	800,000	0		800,000	141,238	364,540	294,222
SC Community Leadership Center Purchase (BLOCK 7)	22,500,483	106,229 (2)(7)		22,606,712	0	21,582,265	1,024,447
19-009A Campus Wide Infrastructure - Design	83,222	0		83,222	0	3,905	79,317
19-009B Campus Wide Infrastructure - Electrical Upgrades	513,497	0		513,497	21,805	410,445	81,187
19-010 SC Main Campus Keying & Access Control	374,998	0		374,998	33,366	88,156	251,475
21-007 100 Bldg-Phase 2 (Student Services Center)	10,500,000	0		10,500,000	141,219	786,614	9,572,167
21-002 1600 Building (Life Sciences) Renovation	1,663,000	0		1,663,000	457,000	81,195	1,124,805
23-006 700 Building Renovation	5,847,550	0		5,847,550	1,879,164	2,821,565	1,146,821
22-010 SC Main Campus Fiber Project - Phases 2 & 3	375,000	0		375,000	10,281	187,096	177,713
24-002 Space Refresh	500,000	0		500,000	34,900	456,338	8,762
24-009 SC Fire Academy 6-Story Fire Tower	913,300	2,300,000 (8)		3,213,300	1,738,305	385,107	1,089,888
25-002 1400 Building (Earth Sciences) Renovation	185,000	0		185,000	67,750	25,527	91,723
<b>Total Taxable Bonds</b>	<b>\$45,678,313</b>	<b>\$2,406,229</b>	<b>\$0</b>	<b>\$48,084,542</b>	<b>\$4,527,088</b>	<b>\$28,614,925</b>	<b>\$14,942,528</b>

There are no budget increases or decreases to report.



# Bond Measure A – Taxpayer Savings



## Bond Measure A Maturities

Refunding Year	Balance at 6/30/2024	Maturity	Taxpayer Savings from Refunding
2020	\$2,215,000	2028	\$300,000
2024	\$11,520,000	2030	\$1,200,000
2014	\$1,175,000	2031	\$2,062,305
		<b>Total Savings</b>	<b>\$3,562,305</b>



# Facility Condition Index Explained

The Facility Condition Index is the industry standard  
For measuring facilities performance

## How is it calculated?

The cost to complete all building repairs *divided by*  
the cost to replace the building exactly as it is.

$$\text{FCI} = \frac{\text{Building Repairs}}{\text{Current Replacement Value}} \quad \text{10\% FCI} = \frac{\$100,000}{\$1,000,000}$$



5

# Facility Condition Index Explained *(continued)*

## How does this inform facilities planning?

The higher the FCI percentage, the greater the cost for repair. As the difference between the repair cost and replacement cost shrinks, the more favorable it becomes to replace rather than repair. The FCI percentage tells us at a glance what would be more favorable. This is particularly important when comparing multiple buildings and structures competing for the same dollars.

### 2022 Assessment

Shasta College			
Campus Information	Building Information	Room Information	
Gross Sq. Ft: 671,778	Facility Condition Index: 86.59%	Replacement Cost: \$318,698,589.55	
Estimate Cost: \$175,414,115.67	Additional Cost: \$100,558,838.77	Repair Cost: \$275,972,954.44	

### 2025 Assessment

Shasta College			
Campus Information	Building Information	Room Information	
Gross Sq. Ft: 674,402	Facility Condition Index: 74.12%	Replacement Cost: \$329,315,368.47	
Estimate Cost: \$157,211,712.17	Additional Cost: \$90,143,988.66	Repair Cost: \$247,355,700.83	



6

## Future Facilities Improvement Measure

### Needs Assessment Informed By:

- 2025 CCCCO Facilities Condition Assessment
- Annual Area Plan Initiatives
- Program Reviews (past 3 years)
- Staff & Student Surveys

Voter polling survey results presentation  
by Jon Isom of Isom Advisors

Wednesday, January 21<sup>st</sup> at 5:00 PM

Location: SC Community Leadership Center  
1401 California Street, 5<sup>th</sup> Floor

*You are  
invited!*



7

7

## 800 Building (Instructional Classrooms) Remodel



New Metal Soffits  
and Wall Cladding



8

8

800 Building (Instructional Classrooms) Remodel *(continued)*



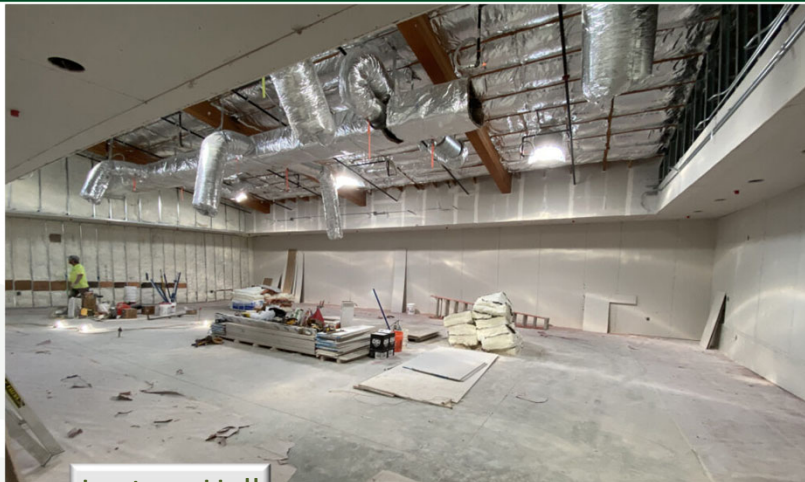
West Entry



9

9

800 Building (Instructional Classrooms) Remodel *(continued)*



Lecture Hall



10

10

800 Building (Instructional Classrooms) Remodel (continued)



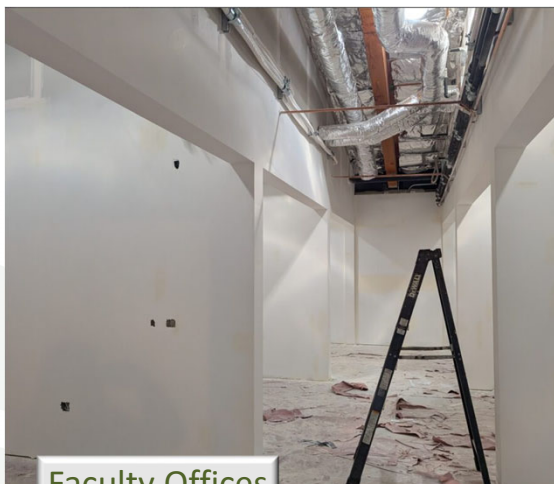
Future Student Lounge



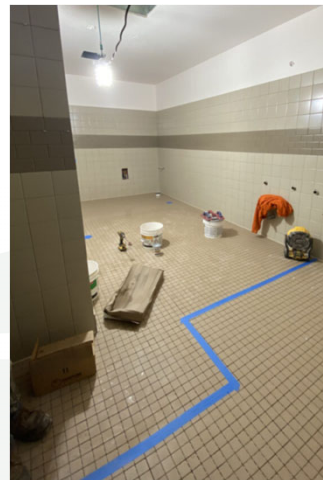
11

11

800 Building (Instructional Classrooms) Remodel (continued)



Faculty Offices



12

12

## 800 Building (Instructional Classrooms) Remodel *(continued)*



Sakura Trees donated by the  
Japan Cultural Society



13

13

## 800 Building (Instructional Classrooms) Remodel *(continued)*



800 Building  
Quad Landscaping



14

14

800 Building (Instructional Classrooms) Remodel *(continued)*



Landscaping at East Side of Building



800 Building (Instructional Classrooms) Remodel *(continued)*



Concrete Walkways  
adjacent to the  
Sycamore Parking Lot



## 700 Building (Administrative Offices) Renovation



17

## 700 Building (Administrative Offices) Renovation *(continued)*



Human Resources  
Office



18

700 Building (Administrative Offices) Renovation *(continued)*



Central Areas  
between Office Pods



700 Building (Administrative Offices) Renovation *(continued)*



President's Office



2<sup>nd</sup> Floor Hallway



700 Building (Administrative Offices) Renovation *(continued)*

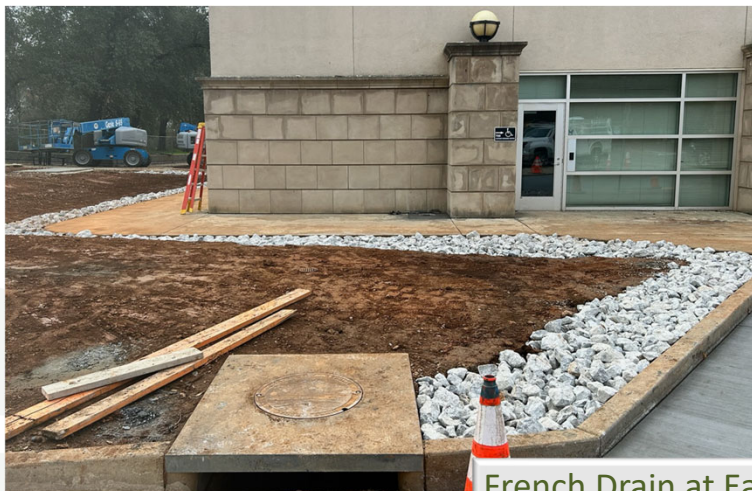


New 2<sup>nd</sup> Floor Windows



21

700 Building (Administrative Offices) Renovation *(continued)*



French Drain at East Side of Building



22

# 1600 Building Fire Lane



# 1600 Building Fire Lane *(continued)*



Circa 1967 Water Line Replacement



## 1600 Building Fire Lane *(continued)*



25

## 1600 Building Fire Lane *(continued)*



View North



26

## 1600 Building Fire Lane *(continued)*



View South



27

## Greenhouse Refurbishment



28

## Greenhouse Refurbishment *(continued)*



- Siding Replaced
- New Doors & Windows
- Upgraded Electrical
- New Lighting
- Upgraded Sink & Plumbing
- New WiFi Thermostats



29

## For more information...



About / Bond Projects / Measure H

Theresa Markword,  
AVP of Facilities &  
Capital Construction

[tmarkword@shastacollege.edu](mailto:tmarkword@shastacollege.edu)  
(530) 242-7699

Isabella Greenleaf,  
Bond Project Coordinator

[igreenleaf@shastacollege.edu](mailto:igreenleaf@shastacollege.edu)  
(530) 242-7978

Kacie Richardson,  
Bond Project Coordinator  
[krichardson@shastacollege.edu](mailto:krichardson@shastacollege.edu)  
(530) 242-7527

Magan Kleinman,  
Bond Program Fiscal Analyst  
[mkleinman@shastacollege.edu](mailto:mkleinman@shastacollege.edu)  
(530) 242-7747

Janette Brockmann,  
Bond Program Administrative Professional II  
[jbrockmann@shastacollege.edu](mailto:jbrockmann@shastacollege.edu)  
(530) 319-3214



30

30

**Shasta-Tehama-Trinity Joint Community College District  
Measure H General Obligation Bonds**

**Cumulative Recap of Bond Activity  
September 7, 2017 - March 31, 2026**

**Bond Income/Outflow**

<b>Tax Exempt Bonds</b>	
Bond Sales Series A (9/7/2017)	\$ 50,000,000
Series A Net Issuance Costs	(208,359)
Bond Sales Series B (10/3/2019)	20,000,000
Series B Issuance Costs	(119,820)
Bond Sales Series C (12/9/2020)	10,000,000
Series C Issuance Costs	(53,788)
Refunded 2009A/2008A Bonds	(7,987,268)
Additional Funds from Other Sources	27,809,345
Net Available Funds for Projects	\$ 99,440,110
Encumbrances	(1,438,919)
Project Expenditures to Date	(99,231,906)
Budget Remaining	(1,276,059)
Ending Available Funds for Projects	<u>\$ (2,506,773)</u>

<b>Taxable Bonds</b>	
Bond Sales Series B-1 (10/3/2019)	\$ 20,000,000
Series B-1 Issuance Costs	(188,882)
Bond Sales Series C-1 (12/9/2020)	\$ 20,000,000
Series C-1 Issuance Costs	(186,450)
Bond Sales Series D (6/27/2023)	19,000,000
Series D Issuance Costs	(184,964)
Additional Funds from Other Sources	2,556,169
Net Available Funds for Projects	\$ 60,995,874
Encumbrances	(3,161,926)
Project Expenditures to Date	(30,933,977)
Budget Remaining	(13,214,132)
Ending Available Funds for Projects	<u>\$ 13,685,839</u>

<b>Interest Proceeds for Future Allocation (through 12/31/25)</b>				
Fiscal Year	Tax Exempt Bonds	Taxable Bonds		Total Interest Proceeds
		GO Bonds	NMTC Interest	
2017-2025	\$ 3,027,826	\$ 2,327,052	\$ 139,137	\$ 5,494,015
<b>2025-2026</b>	<b>265,153</b>	<b>374,123</b>	<b>-</b>	<b>639,276</b>
<b>TOTAL</b>	<b>\$ 3,292,978</b>	<b>\$ 2,701,175</b>	<b>\$ 139,137</b>	<b>\$ 6,133,291</b>

**TAX EXEMPT BONDS: Cumulative Recap of Project Budgets, Additional Revenues, Encumbrances and Expenditures**

Active Projects	Current Budget	Funds from Other Sources	Source	Bond Project Reserve Alloc.	Total Budget	Encumbered but not Expensed	Expenditures to Date	Budget Remaining
19-001 200 Building (Library) Renovation	7,515,030	15,589,000	(5)		23,104,030	6,895	22,905,450	191,685
20-003 800 Building Renovation	6,267,700	5,070,000	(5)		11,337,700	1,432,024	8,821,302	1,084,374

Completed Projects	Budget Commitment	Funds from Other Sources	Source	Bond Project Reserve Alloc.	Total Budget	Encumbrances	Expenditures	Budget Remaining
Bond Project Reserve	1,000,000	0			0	0	0	0
100 Building Reno-Phase 1 (Student Svcs. One-Stop Shop)	93,805	0			93,805	0	93,805	0
2000 Building HVAC Replacement	641,245	4,668,750	(4)(6)		5,309,995	0	5,309,995	0
2400 Building - Electrical Equipment Upgrade (#18-008A)	101,652	0			101,652	0	101,652	0
2400-2500-2600 Buildings HVAC & Exterior Refresh	2,352,729	1,224,000	(4)(6)		3,576,729	0	3,576,729	0
Athletic Fieldhouse Bldg w/Restrooms (#18-002)	1,182,940	0			1,182,940	0	1,182,940	0
CIS Building (#18-015)	8,319,255	0			8,319,255	0	8,319,255	0

**Shasta-Tehama-Trinity Joint Community College District  
Measure H General Obligation Bonds**

**Cumulative Recap of Bond Activity  
September 7, 2017 - March 31, 2026**

Completed Projects	Budget Commitment	Funds from Other Sources	Source	Bond Project Reserve Alloc.	Total Budget	Encumbrances	Expenditures	Budget Remaining
Campus Wide Infrastructure (18-009)	7,189,484	0		200,000	7,389,484	0	7,389,484	0
CTE Building and Covered Storage (#18-008)	5,083,145	205,500	(2)		5,288,645	0	5,288,645	0
Dorms Upgrade Project (#20-006)	188,120	507,258	(4)		695,378	0	695,378	0
Farm Building 4500 Shade Structure (#19-008)	89,904	0			89,904	0	89,904	0
Gymnasium Air Conditioning (#18-007)	1,686,823	0			1,686,823	0	1,686,823	0
HSUC Folding Wall Replacement (#18-018)	180,042	0			180,042	0	180,042	0
HSUC Security Office Remodel (#20-002)	297,856	0			297,856	0	297,856	0
Information Technology Projects	1,941,619	0			1,941,619	0	1,941,619	0
Interior/Exterior Lighting Project (#18-023)	49,789	0			49,789	0	49,789	0
MH General Expenses (Tax Exempt Series Expenditures)	1,067,442	0			1,067,442	0	1,067,442	0
Property Purchases	44,949	0			44,949	0	44,949	0
Regional Public Safety Training Center - Phase 1 (#15-016)	2,569,310	0		300,000	2,869,310	0	2,869,310	0
RPSTC Classroom Buildings - Phase 2 (#18-004)	5,599,845	152,634	(2)		5,752,479	0	5,752,479	0
Regional Public Safety Training Ctr - Ph 3 (21-006)	1,029,165	333,543	(2)(3)		1,362,708	0	1,362,708	0
SC Main Campus Fencing & Gates	152,016	0			152,016	0	152,016	0
SC Main Campus Keying & Access Control (18-010)	1,334,377	0			1,334,377	0	1,334,377	0
Security Dept. Relocation & Warehouse (#18-001)	3,003,301	0			3,003,301	0	3,003,301	0
<b>Solar Project - East Lot (#18-017)</b>	<b>FINAL 6,400,000</b>	0		500,000	6,900,000	0	6,900,000	0
Tehama Campus Student Services Bldg (#18-006)	6,119,371	2,531	(1)		6,121,902	0	6,121,902	0
Veterans Center Building (#18-003)	2,636,623	56,130	(1)		2,692,752	0	2,692,752	0
<b>Total Tax Exempt Bonds</b>	<b>\$74,137,538</b>	<b>\$27,809,345</b>			<b>\$101,946,883</b>	<b>\$1,438,919</b>	<b>\$99,231,906</b>	<b>\$1,276,059</b>

**TAXABLE BONDS: Cumulative Recap of Project Budgets, Additional Revenues, Encumbrances and Expenditures**

Active Projects	Current Budget	Funds from Other Sources	Source	Bond Project Reserve Alloc.	Total Budget	Encumbered but not Expensed	Expenditures to Date	Budget Remaining
Measure H General Expenses (Taxable Series Expenditures)	800,000	0			800,000	64,195	484,602	251,203
18-009A Campus Wide Infrastructure - Design	83,222	0			83,222	0	3,905	79,317
18-009B Campus Wide Infrastructure - Electrical Upgrades	513,497	0			513,497	21,865	416,124	75,508
18-010 SC Main Campus Keying & Access Control	374,998	0			374,998	30,157	99,514	245,327
21-007 100 Bldg-Phase 2 (Student Services Center)	10,500,000	0			10,500,000	100,114	864,320	9,535,566
21-002 1600 Building (Life Sciences) Renovation	1,663,000	0			1,663,000	0	560,910	1,102,090
23-006 700 Building Renovation	5,847,550	149,940	(6)		5,997,490	1,119,349	4,330,602	547,539
22-010 SC Main Campus Fiber Project - Phases 2 & 3	375,000	0			375,000	10,281	198,364	166,355
<b>24-002 Space Refresh</b>	<b>600,000</b>	0			600,000	34,900	473,376	91,724
24-009 SC Fire Academy 6-Story Fire Tower	913,300	2,300,000	(8)		3,213,300	1,713,315	449,490	1,050,495
25-002 1400 Building (Earth Sciences) Renovation	185,000	0			185,000	67,750	48,242	69,008
Completed Projects	Budget Commitment	Funds from Other Sources	Source	Bond Project Reserve Alloc.	Total Budget	Encumbrances	Expenditures	Budget Remaining
1300 Building Renovation (20-004)	15,797	0			15,797	0	15,797	0
Athletics Complex - Phase 1 (24-001)	15,913	0			15,913	0	15,913	0
SC Campus 12kV Infrastructure Replacement (24-010)	1,390,553	0			1,390,553	0	1,390,553	0
<b>SC Community Leadership Center Purchase (BLOCK 7)</b>	<b>FINAL 21,476,036</b>	106,229	(2)(7)		21,582,265	0	21,582,265	0
<b>Total Taxable Bonds</b>	<b>\$44,753,866</b>	<b>\$2,556,169</b>	<b>\$0</b>	<b>\$0</b>	<b>\$47,310,035</b>	<b>\$3,161,926</b>	<b>\$30,933,977</b>	<b>\$13,214,132</b>

**Shasta-Tehama-Trinity Joint Community College District  
Measure H General Obligation Bonds**

**Cumulative Recap of Bond Activity  
September 7, 2017 - March 31, 2026**

**Additional Funding Sources:**

(1) California Community Colleges Chancellor's Office - Veterans Resource Center (VRC) Funding	\$	58,661
(2) Strong Workforce Program Funding in support of Career Technical Education Programs		674,906
(3) Fire Chief's Association Contribution		58,000
(4) Higher Education Emergency Relief Fund (HEERF) Offset		5,053,258
(5) State Funded Projects		20,659,000
(6) <b>Scheduled Maintenance Funds</b>		<b>1,496,690</b>
(7) North State Together Technology/FFE Contribution		65,000
(8) ZOGG Fire Settlement Funding		2,300,000
<b>TOTAL ADDITIONAL FUNDS FROM OTHER SOURCES:</b>	<b>\$</b>	<b>30,365,514</b>

<b>Budget Change Detail:</b>	<b>BUDGET DECREASE</b>	<b>AMOUNT</b>	<b>NOTES</b>
		SC Community Leadership Center Purchase (BLOCK 7)	(\$1,024,447)
	<b>TOTAL BUDGET DECREASE</b>	<b>(\$1,024,447)</b>	
	<b>BUDGET INCREASE</b>	<b>AMOUNT</b>	<b>NOTES</b>
		24-002 Space Refresh	\$100,000
	<b>TOTAL BUDGET INCREASE</b>	<b>\$100,000</b>	
	<b>NET BUDGET DECREASE</b>	<b>(\$924,447)</b>	

Report prepared for the Citizens' Bond Oversight Committee for Bond Measure H and the Shasta College Board of Trustees.

For questions on this financial report, please contact Theresa Markword, Associate Vice President of Facilities and Capital Construction at tmarkword@shastacollege.edu or at (530) 242-7699.

MEASURE H GENERAL EXPENSES (TAXABLE SERIES EXPENDITURES)			Encumbrances	Bond Program Management	Legal Ads	Legal Fees	Audit Fees	Postage	Building Lease	Service Fees	Software	Site Improvements	Buildings/ Construction	FFE <\$5,000	TOTAL EXPENDITURES
Expense Description	Date		210000/212000	504000	504300	506000	508000	521300	573000	578000	612000	620000	640000		
INITIAL BUDGET (Expenses other than Program Management)	7/1/2024														400,000.00
Bond Program Management Costs through 2030	7/1/2024		400,000.00												400,000.00
Interest Proceeds															
ADJUSTED BUDGET															800,000.00
<b>Bond Program Management</b>															
2024-2025 Staff Expenses	District Wide Projects		62,460.62												
2025-2026 Staff Expenses (QUARTER 1)	District Wide Projects		16,579.51												
2025-2026 Staff Expenses (QUARTER 2)	District Wide Projects		16,758.34												
2025-2026 Staff Expenses (QUARTER 3)	District Wide Projects		17,034.95												
<b>Legal Ads</b>															
Record Searchlight (Cal Card)	Contractor Prequalification	12/16/2024		280.98											
<b>Legal Fees</b>															
Public Agency Law Group	Legal Fees	9/30/2024			1,258.00										
Public Agency Law Group	Legal Fees	10/31/2024			612.00										
Public Agency Law Group	Legal Fees	12/31/2025			3,894.52										
Public Agency Law Group	Legal Fees	1/30/2025			1,157.00										
Public Agency Law Group	Legal Fees	2/28/2025			2,107.00										
Public Agency Law Group	Legal Fees	3/31/2025			748.00										
Public Agency Law Group	Legal Fees	4/30/2025			2,772.00										
Public Agency Law Group	Legal Fees	5/31/2025			2,278.00										
Public Agency Law Group	Legal Fees	5/31/2025			1,088.00										
Public Agency Law Group	Legal Fees	6/30/2025			3,264.00										
Public Agency Law Group (#10753)	Legal Fees	7/1/2025	7,316.00												
Public Agency Law Group	Legal Fees	7/31/2025			2,856.00										
Public Agency Law Group	Legal Fees	9/28/2025			2,822.00										
Public Agency Law Group	Legal Fees	10/28/2025			1,326.00										
Public Agency Law Group	Legal Fees	12/2/2025			680.00										
<b>Audit Fees</b>															
Cossolias/Wilson/Dominguez/Leavitt CPA's	Auditors	9/20/2024				5,620.05									
Cossolias/Wilson/Dominguez/Leavitt CPA's	Auditors	1/23/2025				1,248.90									
Cossolias/Wilson/Dominguez/Leavitt CPA's (#10900)	BPO Encumbrance	11/5/2025	4,886.00												
Cossolias/Wilson/Dominguez/Leavitt CPA's	Auditors	11/25/2025				4,445.60									
Cossolias/Wilson/Dominguez/Leavitt CPA's	Auditors	12/5/2025				6,668.40									
<b>Postage</b>															
<b>Building Lease</b>															
SHIELD Training Center	Monthly Lease (July)	7/15/2024						5,985.00							
SHIELD Training Center	Monthly Lease (Aug)	8/14/2024						5,985.00							
SHIELD Training Center	Monthly Lease (Sept)	9/17/2024						5,985.00							
SHIELD Training Center	Monthly Lease (Oct)	10/8/2024						5,985.00							
SHIELD Training Center	Monthly Lease (Nov)	11/19/2024						5,985.00							
SHIELD Training Center	Monthly Lease (Dec)	11/26/2024						5,985.00							
SHIELD Training Center	Monthly Lease (Jan)	12/5/2024						5,985.00							
SHIELD Training Center	Monthly Lease (Feb)	1/10/2025						5,985.00							
SHIELD Training Center	Monthly Lease (Mar)	2/10/2025						5,985.00							
SHIELD Training Center	Monthly Lease (Apr)	3/4/2025						5,985.00							
SHIELD Training Center	Monthly Lease (May)	4/4/2025						5,985.00							
SHIELD Training Center	Monthly Lease (June)	5/6/2025						5,985.00							
SHIELD Training Center (#9638)	BPO Encumbrance	7/1/2025	13,167.00												
SHIELD Training Center	Monthly Lease (July)	7/1/2025						5,985.00							
SHIELD Training Center	Monthly Lease (Aug)	8/1/2025						5,985.00							
SHIELD Training Center	Monthly Lease (Sept)	9/1/2025						5,985.00							
SHIELD Training Center	Monthly Lease (Oct)	10/1/2025						6,384.00							
SHIELD Training Center	Monthly Lease (Nov)	11/1/2025						6,384.00							
SHIELD Training Center	Monthly Lease (Dec)	12/1/2025						6,384.00							
SHIELD Training Center	Monthly Lease (Jan)	1/1/2026						6,384.00							
SHIELD Training Center	Monthly Lease (Feb)	2/1/2026						6,384.00							
SHIELD Training Center	Monthly Lease (Mar)	3/1/2026						6,384.00							
SHIELD Training Center	Monthly Lease (Apr)	4/1/2026						6,384.00							
<b>Architectural/Engineering</b>															
Pace Civil Engineering, Inc. (#10093)	Progress payment	2/10/2025							4,700.00						
Division of State Architect (#133431)	Final fees for 2000 HVAC	2/18/2025							16,466.42						
Pace Civil Engineering, Inc.	Progress payment	3/11/2025							4,422.00						
Nichols, Melberg & Rossetto	Progress payment	5/31/2025							1,875.00						
Nichols, Melberg & Rossetto	Progress payment	6/30/2025							4,275.00						
Nichols, Melberg & Rossetto (#10791)	Construction Management	7/1/2025	8,200.00												
Nichols, Melberg & Rossetto	Progress payment	8/31/2025							3,750.00						
Nichols, Melberg & Rossetto	Progress payment	10/31/2025							2,550.00						
Nichols, Melberg & Rossetto	Progress payment	11/30/2025							2,175.00						
Nichols, Melberg & Rossetto	Progress payment	12/31/2025							2,175.00						
Nichols, Melberg & Rossetto	Progress payment	3/9/2026							4,275.00						
<b>Other Service Fees</b>															
Hemsteds/All Seasons Moving (#9652)	Moving service	7/30/2024							2,147.50						
Hemsteds/All Seasons Moving	Moving service	8/5/2024							1,110.00						
Hemsteds/All Seasons Moving	Moving service	8/30/2024							370.00						
Hemsteds/All Seasons Moving	Moving service	10/8/2024							1,110.00						

MEASURE H GENERAL EXPENSES (TAXABLE SERIES EXPENDITURES)			Encumbrances	Bond Program Management	Legal Ads	Legal Fees	Audit Fees	Postage	Building Lease	Service Fees	Software	Site Improvements	Buildings/ Construction	FFE <\$5,000	TOTAL EXPENDITURES
Expense Description	Date		210000/212000		504000	504300	506000	508000	521300	573000	578000	612000	620000	640000	
Pern Laughlin	Partial payment	11/17/2024								1,600.00					
Hemsteds/All Seasons Moving	Moving service	11/19/2024								2,279.38					
Hemsteds/All Seasons Moving	Moving service	12/11/2024								5,200.65					
Pern Laughlin	Partial payment	12/22/2024								1,600.00					
Hemsteds/All Seasons Moving	Moving service	1/14/2025								4,440.00					
AMS.net (#132559)	Partial payment	1/13/2025								45.00					
Pern Laughlin	Partial payment	1/20/2025								1,600.00					
AMS.net (#132560)	Cabling for sign board	2/4/2025								798.00					
Pern Laughlin	Partial payment	2/21/2025								1,600.00					
Hemsteds/All Seasons Moving	Moving service	2/28/2025								1,896.25					
AMS.net (#132559)	Signboard for Verkada	3/6/2025								405.00					
AMS.net (#132560)	Cabling for sign board	3/7/2025								42.00					
Hemsteds/All Seasons Moving	Moving service	3/7/2025								1,295.00					
Hemsteds/All Seasons Moving	Moving service	3/11/2025								3,792.50					
Pern Laughlin	Partial payment	3/20/2025								1,600.00					
Hemsteds/All Seasons Moving	Moving service	4/4/2025								2,590.00					
Pern Laughlin	Partial payment	4/17/2025								1,600.00					
Hemsteds/All Seasons Moving	Moving service	6/16/2025								7,730.00					
Hemsteds/All Seasons Moving	Moving service	6/16/2025								22,410.00					
Hemsteds/All Seasons Moving	Moving service	6/23/2025								1,896.25					
Arc Alternatives	Solar performance review	7/1/2025	8,940.00												
Pern Laughlin	DSA Inspection Services - VERKADA	7/1/2025	8,000.00												
Hemsteds/All Seasons Moving (#10440)	BPO Encumbrance	7/1/2025	13,686.25												
Hemsteds/All Seasons Moving	Moving service	7/29/2025								6,688.75					
Hemsteds/All Seasons Moving	Moving service	8/11/2025								1,480.00					
Hemsteds/All Seasons Moving	Moving service	10/31/2025								3,145.00					
Isom Advisors (#11064)	Arbitrage Compliance	3/2/2026								9,000.00					
<b>Software</b>															
<b>Site Improvements</b>															
Total Energies (#10834)	Solar Project	2/2/2026								51,913.18					
<b>Buildings/Construction</b>															
Geary Pacific	Supplies	1/30/2025											36.62		
Redding Countertops (#10126)	Caps for CLC pony walls	3/4/2025											1,783.00		
Paint Marts	Paint for Library diffusers	3/13/2025											157.05		
Paint Marts	Paint for Library vents	5/6/2025											163.43		
Custom Coatings (Cal Card)	Wire moulding for CLC exterior	6/6/2025											310.50		
<b>Furniture, Fixtures &amp; Equipment &lt;\$5,000</b>															
AMS.net (#132559)	Signboard for Verkada	12/13/2024												1,926.92	
Dell (REFUND)	Refund for desktop computer & monitors for Tehama from 2021	2/19/2026												(246.31)	
<b>TOTAL - 71699</b>			<b>64,195.25</b>	<b>112,833.42</b>	<b>280.98</b>	<b>26,862.52</b>	<b>17,982.95</b>	<b>0.00</b>	<b>134,463.00</b>	<b>188,047.88</b>	<b>0.00</b>	<b>0.00</b>	<b>2,450.60</b>	<b>1,680.61</b>	<b>484,601.96</b>
													<b>Encumbrances</b>		<b>64,195.25</b>
<b>Budget Remaining</b>															<b>251,202.79</b>





200 BUILDING (LIBRARY) RENOVATION (19-001)			Encumbrances	Bond Program Mgmt	Service Fees	Software License	Infrastructure (Non-supportable)	Architectural/Engineering	Testing/Inspection	Other Fees	Buildings/Construction	Technology Equipment	Furniture, Fixtures & Equipment	Contingency	TOTAL
Expense Description	DATE		212000	573000	578001	612003	620000 Prelim Plans / 620001 Working Drawings / 620002 Construction	640000/649000	640001/649001	8%					
<b>Infrastructure (612003) - Non-supportable</b>															
Z&H Associates	8" gate valve install and sprinkler main repair	8/25/2023					11,698.39								
Platt/Rexel USA, Inc.	Materials to add conduits between light poles	10/9/2023					1,351.87								
I-S Rentals (#127211)	Vacuum trailer equipment rental	10/25/2023					2,267.02								
Platt/Rexel USA, Inc.	Materials to add conduits between light poles	11/15/2023					794.73								
North Valley Distributing (#127666)	Electrical conduit and supplies	11/17/2023					1,431.63								
North Valley Distributing (#127667)	Electrical supplies	11/17/2023					214.22								
Platt/Rexel USA, Inc. (#127738)	Pull box cover	11/22/2023					50.86								
Platt/Rexel USA, Inc. (#127739)	Electrical supplies	11/22/2023					932.97								
Pace Supply (#127799)	Supplies for water heater relocation	11/28/2023					1,014.78								
Solid Rock Construction (#127724)	Vacuum truck and ground penetrating radar	11/28/2023					10,500.00								
Ferguson Enterprises (#9302)	Waterline repair materials	12/15/2023					4,571.82								
California Safety Co. (#128255)	Emergency fire alarm fiber repair	1/8/2024					1,600.00								
California Safety Co. (#131460)	Emergency fire alarm fiber repair	8/20/2024					947.72								
Normac (#131859)	Grounds supplies	9/30/2024					504.31								
Platt/Rexel USA, Inc. (#133553)	Parts to power generator during infrastructure shut down	2/28/2025					1,712.74								
Platt/Rexel USA, Inc. (#10203)	Exterior lighting	4/14/2025					4,000.19								
Doug Sherman Electric (#10210)	Exterior light poles	6/30/2025					2,015.00								
<b>PRELIMINARY PLANS (620000) - Architectural/Engineering, Testing/Inspection, Other Fees</b>															
Nichols, Melburg & Rossetto	Progress Payment	5/31/2019						6,250.00							
Nichols, Melburg & Rossetto	Final Payment	6/30/2019						18,750.00							
Nichols, Melburg & Rossetto	Progress Payment - Preliminary Plans	11/30/2020						210,000.00							
Nichols, Melburg & Rossetto	Progress Payment - Preliminary Plans	12/31/2020						126,050.00							
Nichols, Melburg & Rossetto	Progress Payment - Preliminary Plans	1/31/2021						45,825.00							
Division of the State Architect (DSA)	Evaluation/Design Criteria Report Fee - Prelim Plans	3/31/2021						2,000.00							
Nichols, Melburg & Rossetto	Progress Payment - PP Constructability Review	3/31/2021							16,000.00						
Nichols, Melburg & Rossetto	Progress Payment - Preliminary Plans	4/30/2021						229,125.00							
California Geological Survey	Geological Hazards Assessment	6/21/2021							3,600.00						
Nichols, Melburg & Rossetto	Progress Pmt - Technology Consultant (PP)	6/30/2021							7,500.00						
Nichols, Melburg & Rossetto	Progress Pmt - Technology Consultant (PP)	6/30/2021							5,000.00						
Division of the State Architect (DSA)	DSA Review Fee	7/28/2021						138,300.00							
Nichols, Melburg & Rossetto	Progress Pmt - Technology Consultant (PP)	9/21/2021							8,750.00						
Nichols, Melburg & Rossetto	Progress Payment - PP Constructability Review	12/17/2021							2,500.00						
Nichols, Melburg & Rossetto	Progress Payment - PP Constructability Review	2/4/2022							2,500.00						
Guzi-West Inspection	Hazmat Assessment/Report	2/8/2022						3,434.28							
Nichols, Melburg & Rossetto	Progress Pmt - Technology Consultant (PP)	4/30/2022							1,937.50						
Nichols, Melburg & Rossetto	Progress Payment - PP Constructability Review	4/30/2022							5,650.25						
Nichols, Melburg & Rossetto	Progress Payment - PP Constructability Review	5/31/2022							2,500.00						
Nichols, Melburg & Rossetto	Progress Payment - PP Constructability Review	6/30/2022							187.50						
Nichols, Melburg & Rossetto	Progress Pmt - Technology Consultant (PP)	6/30/2022							1,812.50						
Nichols, Melburg & Rossetto	Progress Payment - PP Constructability Review	8/31/2022							375.00						
Nichols, Melburg & Rossetto	Progress Payment - PP Constructability Review	9/20/2022							187.50						
Nichols, Melburg & Rossetto	Progress Payment - Preliminary Plans	3/27/2023						9,850.00							
EMSL Analytical, Inc. (#124048)	Hazmat Assessment	3/30/2023							1,688.80						
Guzi-West Inspection	Hazmat Inspection Reporting	4/17/2023							12,000.00						
Nichols, Melburg & Rossetto	Progress Payment - PP Acoustical Consult	8/22/2023							2,640.00						
Guzi-West Inspection	Hazmat Inspection Reporting	8/25/2023							3,109.13						
Guzi-West Inspection (#9257)	Partial payment	11/28/2023						4,207.51							
<b>WORKING DRAWINGS (620001) - Architectural/Engineering, Other Fees</b>															
Nichols, Melburg & Rossetto	Progress Payment - Working Drawings	3/31/2021						30,602.50							
Nichols, Melburg & Rossetto	Progress Payment - Working Drawings	4/30/2021						122,425.91							
Nichols, Melburg & Rossetto	Progress Payment - Working Drawings	5/31/2021						91,807.50							
Nichols, Melburg & Rossetto	Progress Payment - Working Drawings	6/30/2021						61,176.88							
Nichols, Melburg & Rossetto	Progress Payment - Working Drawings	8/31/2021						214,246.46							
Nichols, Melburg & Rossetto	Progress Payment - Working Drawings	2/28/2022						61,192.90							
Nichols, Melburg & Rossetto	Progress Payment - Working Drawings	6/30/2022						30,597.85							
Nichols, Melburg & Rossetto	Progress Payment - Working Drawings	8/31/2022						30,000.00							
Nichols, Melburg & Rossetto	Progress Payment - Working Drawings	3/3/2023						4,297.50							
Nichols, Melburg & Rossetto	Progress Payment - Working Drawings	3/23/2023						8,595.00							
Nichols, Melburg & Rossetto (#8630)	Final Payment - Working Drawings	5/26/2023						43,057.50							
Community Colleges Board of Gov (#131021)	Capital Outlay Plan Check Fee	7/12/2024						50,000.00							
<b>CONSTRUCTION (620002) - State Supportable</b>															
Nichols, Melburg & Rossetto	Progress Payment - Construction/Post-Const Svc	6/14/2023										16,962.70			
Nichols, Melburg & Rossetto	Progress Payment - Construction/Post-Const Svc	8/22/2023										16,202.50			
Nichols, Melburg & Rossetto	Progress Payment - Construction/Post-Const Svc	10/24/2023										16,202.50			
Nichols, Melburg & Rossetto	Progress Payment - Construction/Post-Const Svc	1/2/2024										16,202.50			
Nichols, Melburg & Rossetto	Progress Payment - Construction/Post-Const Svc	2/29/2024										58,329.00			
Nichols, Melburg & Rossetto	Progress Payment - Construction/Post-Const Svc	3/31/2024										10,881.00			
Nichols, Melburg & Rossetto	Progress Payment - Construction/Post-Const Svc	4/30/2024										48,607.50			
Nichols, Melburg & Rossetto	Progress Payment - Construction/Post-Const Svc	5/31/2024										33,725.00			
Nichols, Melburg & Rossetto	Progress Payment - Construction/Post-Const Svc	6/30/2024										17,522.50			
Nichols, Melburg & Rossetto	Progress Payment - Construction/Post-Const Svc	7/31/2024										16,202.50			
Nichols, Melburg & Rossetto	Progress Payment - Construction/Post-Const Svc	9/30/2024										16,202.50			
Nichols, Melburg & Rossetto	Progress Payment - Construction/Post-Const Svc	10/31/2024										21,203.00			
Nichols, Melburg & Rossetto	Progress Payment - Construction/Post-Const Svc	11/30/2025										6,481.00			
Nichols, Melburg & Rossetto	Progress Payment - Construction/Post-Const Svc	12/31/2025										14,993.16			
Nichols, Melburg & Rossetto	Progress Payment - Construction/Post-Const Svc	1/31/2025										8,967.44			
Nichols, Melburg & Rossetto	Progress Payment - Construction/Post-Const Svc	2/28/2025										8,444.40			
Nichols, Melburg & Rossetto	Progress Payment - Construction/Post-Const Svc	4/30/2025										10,778.50			
Nichols, Melburg & Rossetto	Progress Payment - Construction/Post-Const Svc	5/31/2025										38,677.50			
Nichols, Melburg & Rossetto	Progress Payment - Construction/Post-Const Svc	6/30/2025										38,677.50			
Nichols, Melburg & Rossetto	Progress Payment - Construction/Post-Const Svc	7/31/2025										3,438.00			
Nichols, Melburg & Rossetto	Final Payment - Construction/Post-Const Svc	9/30/2025										859.50			



200 BUILDING (LIBRARY) RENOVATION (19-001)			Encumbrances	Bond Program Mgmt	Service Fees	Software License	Infrastructure (Non-supportable)	Architectural/Engineering	Testing/Inspection	Other Fees	Buildings/Construction	Technology Equipment	Furniture, Fixtures & Equipment	Contingency	TOTAL
Expense Description	DATE		212000	573000	578001	612003	620000 Prelim Plans / 620001 Working Drawings / 620002 Construction	640000/649000	640001/649001	8%					
Retention Accrual Account (#9765)	Pay Application #15	7/31/2024	29,233.93												
Retention Accrual Account	Pay Application #16	8/30/2024	44,112.12												
Retention Accrual Account	Pay Application #17	9/30/2024	22,011.08												
Retention Accrual Account	Pay Application #18	10/31/2024	65,808.82												
Retention Accrual Account	Pay Application #19	11/30/2024	47,465.78												
Retention Accrual Account	Pay Application #20	12/31/2024	65,229.33												
Retention Accrual Account	Pay Application #21	1/31/2025	42,614.62												
Retention Accrual Account	Pay Application #22	2/28/2025	30,623.84												
Retention Accrual Account	Pay Application #23	3/31/2025	34,270.16												
Retention Accrual Account	Pay Application #24	4/30/2025	9,251.58												
Retention Accrual Account	Pay Application #25	5/31/2025	3,910.71												
Retention Accrual Account	Pay Application #26	6/30/2025	29.52												
Retention Accrual Account	Pay Application #27	10/28/2025	1,083.69												
McCuen Construction, Inc. Credit Adjustment	Pay Application #27	2/9/2026	(1,083.69)												
McCuen Construction, Inc. Credit Adjustment	Pay Application #28	2/9/2026	(9,599.90)												
Retention Accrual Account Payment	Pay Application #28	10/29/2025	(805,677.16)												
Retention Accrual Account FINAL Pmt	Pay Application #29	2/9/2026	(48,351.40)												
<b>Total Retention Accrual:</b>			<b>0.00</b>												
<b>CONSTRUCTION OTHER</b>															
Builders Door & Window (#9431)	Replacement door frames	6/17/2024										4,255.68			
Ultra Ceiling, Inc. (#133760)	Access doors including framing and access panel	3/10/2025										1,702.80			
Ultra Ceiling, Inc. (#10580)	Framing and installing access panels at main entry area	6/30/2025										6,175.18			
<b>BUILDINGS/CONSTRUCTION (620003) - Non-State Supportable</b>															
Acousthetics LLC	Sound mitigation panels for lobby	3/24/2020										3,342.13			
Redding Fasteners, Inc.	Fastening screws for panel installation	6/17/2020										0.11			
Gifford Construction, Inc.	Installcatwalks above Starbucks to facilitate construction	6/30/2022										7,258.77			
Gifford Construction, Inc. (#8695)	Installation of platform to facilitate construction	5/30/2023										27,597.82			
World Telecom	Cabling and fiberwork	8/7/2023										<b>6,822.72</b>			
Raymac Mechanical, Inc. (#132270)	Ceiling cassette/decorative grille	10/28/2024										1,581.33			
Eagle Lake Plumbing (#132765)	Waterline under west mezzanine	12/6/2024										3,208.90			
Paint Marts (#133318)	Paint for flanges around security equipment	2/10/2025										275.31			
Mendes Supply Co. (#133794)	Tissue paper dispensers	4/4/2025										672.85			
TK Elevator Corp. (#10185)	Elevator clean down	4/4/2025										2,933.45			
TK Elevator Corp.	Elevator prep work	4/22/2025										3,690.00			
Walgamuth Painting (#10180)	Painting at Starbucks storefront	4/25/2025										2,400.00			
Hillyard Inc. (#133793)	Restroom dispensers	5/27/2025										647.75			
Builders Door & Window (#10265)	Door lite kits and glass	6/4/2025										1,202.90			
California Safety Company (#10289)	Fire alarm notification device replacement	6/13/2025										742.19			
LDHI Construction Inc. (#10281)	Electric latch retraction kits	6/13/2025										1,500.00			
Builders Door & Window (#10298)	Wire harness for exterior doors	6/30/2025										591.29			
Server Supply (Cal Card - J. Westlund)	Telephone adapter for elevator	6/30/2025										341.14			
Sunblockers (#10413)	Interior window frosting	8/5/2025										2,300.00			
North State Blinds (#10537)	Additional window shades	8/7/2025										3,050.00			
Raymac Mechanical, Inc. (#10749)	Duct extensions	8/25/2025	6,894.71												
Raymac Mechanical, Inc.	Partial payment	8/28/2025										6,318.70			
Raymac Mechanical, Inc. (#10750)	Thermostat relocations	8/28/2025										3,046.75			
Redding Countertops (#10732)	Wall cap at stacks area	1/9/2026										<b>8,833.00</b>			
Division of State Architect (#137041)	DSA Final Closing Fees	1/21/2026										<b>16,289.36</b>			
<b>CONSTRUCTION CONTRACT - Wike Restoration Inc.</b>															
<b>CHANGE ORDERS (Original Contract Amt = \$389,500)</b>															
Change Order #1: Additional hazmat remediation due to concealed conditions		8/15/2023	40.69%									158,500.00			
<b>Cumulative Change Orders</b>			40.69%									158,500.00			
Wike Construction	Pay Application #1	6/13/2023										<b>92,506.25</b>			
Wike Construction	Pay Application #2	6/30/2023										<b>97,131.57</b>			
Wike Construction	Pay Application #3	7/31/2023										<b>180,387.19</b>			
Wike Construction (#9015)	Pay Application #4	9/28/2023										<b>150,575.00</b>			
Wike Construction	Pay Application #5	12/20/2023										<b>27,399.99</b>			
<b>Retention Accrual</b>															
Retention Accrual Account	Pay Application #1	6/13/2023	4,868.75												
Retention Accrual Account	Pay Application #2	6/30/2023	5,112.18												
Retention Accrual Account	Pay Application #3	7/31/2023	9,494.06												
Retention Accrual Account	Pay Application #4	9/28/2023	7,925.00												
Retention Accrual Account FINAL Pmt	Pay Application #5	12/20/2023	(27,399.99)												
<b>Total Retention Accrual:</b>			<b>0.00</b>												
<b>Testing/Inspection</b>															
RGD Acoustics, Inc.	Acoustical testing & report	6/25/2019							8,000.00						
<b>Other Fees</b>															
Ellis Art & Engineering Supplies	Construction Doc Copies	6/5/2019								15.44					
Silva Cost Consulting, Inc. (#120086)	Construction Cost Estimate	8/18/2022								12,000.00					
California Safety Co. (#126484)	Repair to alarm system (due to demo)	8/29/2023								<b>480.00</b>					
Bundys Tree Service (#125861)	Tree removal	9/18/2023								<b>8,220.00</b>					
World Telecom (#9231)	Fiber run	11/6/2023								<b>2,095.72</b>					
William Sharp (#9244)	Trench and install conduit pathways for exterior lights	11/15/2023								<b>4,869.43</b>					
World Telecom (#128378)	Emergency fiber repair	1/19/2024								6,311.20					
World Telecom (#128450)	Emergency repair to fire panel	1/24/2024								3,141.87					
World Telecom (#9341)	Single mode fiber patch cords	1/30/2024								918.90					
World Telecom (#128436)	Card reader repair	2/5/2024								718.75					
Air Doctor (#9350)	Duct cleaning and lining	2/20/2024								<b>39,292.00</b>					
<b>Technology Equipment &lt;\$5000 (640000)</b>															
Library Store, Inc. (#117470)	Library book drop-off kiosk	2/10/2022										5,063.77			
Sweetwater Pro Audio (#132424)	Outdoor speakers	11/26/2024										2,037.75			
CDW Government (#132794)	Screen for Library	1/10/2025										6,788.88			
Provantage (#132936)	Amp for Library outdoor speakers	1/10/2025										1,378.16			
Markertek.com (#132425)	Outdoor speakers shipping	1/31/2025										123.25			
CDW Government (#133509)	Meeting room printer	2/27/2025										418.69			
Provantage (#133506)	Meeting room speakerphone system	3/5/2025										11,998.06			





800 BUILDING (INSTRUCTIONAL CLASSROOMS) RENOVATION (20-003)			Encumbrances	Bond Program Mgmt	Service Fees	Software License	Site Improvements	Architectural/Engineering	Testing/Inspection	Other Fees	Buildings/Construction	Technology Equipment	Furniture, Fixtures & Equipment	Contingency	TOTAL
Expense Description	DATE		212000	573000	578001	612000			620000			640000/649000	640001/649001	8%	
<b>Service Fees</b>															
Hemsted's /All Seasons Moving	800 Building furniture moves	4/8/2024			980.00										
Butt Hut Comfort Stations, Inc. (#9469)	Portable restrooms for 800 Building	6/30/2024			341.00										
One Workplace (#9102)	Design consulting services	6/30/2024			4,617.11										
Butt Hut Comfort Stations, Inc. (#9865)	Portable restrooms for 800 Building	8/23/2024			341.00										
Zanna Fuller	50% deposit	6/30/2025			5,000.00										
Zanna Fuller (#10793)	Interior design consultation for 800 Building	7/1/2025		5,000.00											
Sedia Systems, Inc. (#10780)	Installation of lecture hall seating and tables	9/4/2025		31,000.00											
Trane US, Inc. (#10831)	Chiller rental	9/18/2025	1,653.00												
A-1 Crane Service (#136004)	Placement of rented chiller	10/7/2025			800.00										
HPM Consultants (#10815)	Construction Schedule Review	10/10/2025			4,962.00										
United Rentals, Inc. (#10832)	Generator rental for chiller	10/28/2025			7,517.70										
Trane US, Inc. (#10831)	Chiller rental	10/31/2025			32,038.52										
SC Fuel Backcharge	24 gallons DEF	10/31/2025			189.00										
United Rentals, Inc.	Fuel charge for rented generator	11/4/2025			57.44										
A-1 Crane Service (#136479)	Transporting temporary chiller	11/10/2025			1,000.00										
Caliber Office Furniture	Labor for installation of outdoor furniture	12/12/2025	340.00												
HPM Consultants (#11007)	Construction Schedule Review	1/27/2026			9,920.00										
HPM Consultants (#11071)	Construction Schedule Consulting	3/2/2026	5,158.00												
HPM Consultants (#11071)	Construction Schedule Review	3/6/2026			4,960.00										
Caliber Office Furniture (#11082)	Installation of 800 Building furniture	3/9/2026	24,000.00												
SignHut (#11094)	Installation of 800 Building number signs	3/16/2026	670.00												
<b>Software License</b>															
Ams.net (#10759)	Verkada system	10/15/2025			29,465.10										
<b>Site Improvement</b>															
Western Tree Nursery (Cal Card)	Japanese Cherry Trees	9/4/2025					1,413.54								
McEntire Landscaping	Irrigation work	9/15/2025					15,910.00								
Rexel Platt (#11088)	Parts for light pole replacement	3/13/2026	3,918.46												
<b>PRELIMINARY PLANS (620000) - Architectural/Engineering, Testing/Inspection, Other Fees</b>															
Nichols, Melburg & Rossetto	Progress Pmt	5/31/2020						24,195.00							
Nichols, Melburg & Rossetto	Progress Pmt	7/31/2020						7,000.00							
Nichols, Melburg & Rossetto	Progress Pmt	9/30/2021						114,055.00							
Nichols, Melburg & Rossetto	Progress Pmt	10/31/2021						12,250.00							
Nichols, Melburg & Rossetto	Progress Pmt	11/30/2021						24,500.00							
Nichols, Melburg & Rossetto	Progress Pmt	1/26/2022						24,500.00							
Nichols, Melburg & Rossetto	Progress Pmt	2/28/2022						80,490.40							
Nichols, Melburg & Rossetto	Progress Pmt	3/31/2022						125,999.65							
Nichols, Melburg & Rossetto	Progress Pmt - Constructability Review	3/31/2022						1,500.00							
Nichols, Melburg & Rossetto	Progress Payment - Constructability Review	6/14/2023						3,000.00							
Nichols, Melburg & Rossetto	Progress Pmt - Constructability Review	11/30/2023						12,000.00							
<b>WORKING DRAWINGS (620001) - Architectural/Engineering, Other Fees</b>															
Nichols, Melburg & Rossetto	Progress payment #1	6/30/2023						14,400.00							
Nichols, Melburg & Rossetto	Progress payment #2	7/31/2023						28,800.00							
Nichols, Melburg & Rossetto	Progress payment #3	8/31/2023						28,800.00							
Nichols, Melburg & Rossetto	Progress payment #4	9/30/2023						72,000.00							
Nichols, Melburg & Rossetto	Progress payment #5	10/31/2023						43,196.62							
Division of the State Architect	Division of State Architect fees	12/1/2023						64,300.00							
Nichols, Melburg & Rossetto	Progress payment #6	11/30/2023						28,801.96							
Nichols, Melburg & Rossetto	Progress payment #7	6/20/2024						49,158.19							
Nichols, Melburg & Rossetto	Progress payment #8	10/8/2024						22,853.18							
Nichols, Melburg & Rossetto	Progress payment #9	12/31/2024						3,200.00							
Nichols, Melburg & Rossetto	Final payment for Working Drawings	1/31/2025						28,800.00							
Comm. Colleges-Board of Gov. (#134319)	Plan check fee	4/22/2025						23,000.00							
<b>CONSTRUCTION (620002) - State Supportable Architectural &amp; Engineering</b>															
Nichols, Melburg & Rossetto	Progress payment	2/28/2025						4,000.00							
Nichols, Melburg & Rossetto	Progress payment	4/30/2025						2,000.00							
Nichols, Melburg & Rossetto	Progress payment	5/31/2025						14,000.00							
Nichols, Melburg & Rossetto	Progress payment	6/30/2025						2,000.00							
Nichols, Melburg & Rossetto (#10728)	Encumbrance	7/1/2025	94,000.00												
Nichols, Melburg & Rossetto	Progress payment	7/31/2025						38,000.00							
Nichols, Melburg & Rossetto	Progress payment	8/31/2025						6,000.00							
Nichols, Melburg & Rossetto	Progress payment	9/30/2025						14,000.00							
Nichols, Melburg & Rossetto	Progress payment	10/31/2025						10,000.00							
Nichols, Melburg & Rossetto	Progress payment	11/31/2025						10,000.00							
Nichols, Melburg & Rossetto	Progress payment	12/31/2025						6,000.00							
<b>Testing &amp; Inspection</b>															
Division of the State Architect	Pre-Application for Approval (DSA)	1/24/2023							2,000.00						
Pern Laughlin	Progress payment	4/30/2025							10,000.00						
Pern Laughlin	Progress payment	5/31/2025							10,000.00						
Pern Laughlin	Progress payment	6/30/2025							10,000.00						
Pern Laughlin (#10761)	DSA Inspection Services	7/1/2025	20,000.00												
Pern Laughlin	Progress payment	7/31/2025							10,000.00						

800 BUILDING (INSTRUCTIONAL CLASSROOMS) RENOVATION (20-003)			Encumbrances	Bond Program Mgmt	Service Fees	Software License	Site Improvements	Architectural/Engineering	Testing/Inspection	Other Fees	Buildings/Construction	Technology Equipment	Furniture, Fixtures & Equipment	Contingency	TOTAL
	Expense Description	DATE		212000	573000	578001	612000		620000			640000/649000	640001/649001	8%	
Pern Laughlin	Progress payment	8/31/2025							10,000.00						
Pern Laughlin	Progress payment	9/30/2025							10,000.00						
Pern Laughlin	Progress payment	12/31/2025							10,000.00						
Pern Laughlin	Progress payment	1/12/2026							10,000.00						
Pern Laughlin	Progress payment	2/28/2026							10,000.00						
Pern Laughlin	Progress payment	3/24/2026							10,000.00						
<b>Construction</b>															
Guzi-West Inspection & Consulting (#8367)	Interior & Exterior Full Hazmat Survey	6/27/2022							4,703.74						
Guzi-West Inspection & Consulting (#10906)	Asbestos & Lead Consulting	11/17/2025							3,666.39						
Walgamuth Painting, Inc. (#10978)	Clean and seal exterior aggregate walls	12/18/2025	11,710.00												
SignHut (#11094)	800 Building number signs	3/16/2026	866.20												
SignHut	Deposit	3/16/2026									1,536.20				
Paint Marts (#137642)	Paint for 800 Building	3/24/2026									294.90				
<b>CONSTRUCTION CONTRACT - McCuen Construction, Inc. - Contract Amount = \$7,256,585</b>															
McCuen Construction	Pay Application #1	4/30/2025									446,688.67				
McCuen Construction	Pay Application #2	5/30/2025									841,858.51				
McCuen Construction	Pay Application #3	6/30/2025									694,181.01				
McCuen Construction (#10671)	BPO Encumbrance	7/1/2025	337,683.66												
McCuen Construction	Pay Application #4	7/31/2025									768,620.20				
McCuen Construction	Pay Application #5	8/31/2025									764,501.26				
McCuen Construction	Pay Application #6	9/30/2025									846,341.87				
McCuen Construction	Pay Application #7	10/31/2025									662,483.51				
McCuen Construction	Pay Application #8	11/30/2025									493,735.63				
McCuen Construction	Pay Application #9	12/31/2025									325,048.13				
McCuen Construction	Pay Application #10	1/30/2026									429,425.93				
McCuen Construction	Pay Application #11	2/28/2026									300,071.56				
<b>Retention Accrual</b>															
Retention Accrual Account	Pay Application #1	4/30/2025	23,509.93												
Retention Accrual Account	Pay Application #2	5/30/2025	44,308.34												
Retention Accrual Account	Pay Application #3	6/30/2025	36,535.85												
Retention Accrual Account	Pay Application #4	7/31/2025	40,453.69												
Retention Accrual Account	Pay Application #5	8/31/2025	40,236.91												
Retention Accrual Account	Pay Application #6	9/30/2025	44,544.31												
Retention Accrual Account	Pay Application #7	10/31/2025	34,867.55												
Retention Accrual Account	Pay Application #8	11/30/2025	25,986.09												
Retention Accrual Account	Pay Application #9	12/31/2025	17,107.79												
Retention Accrual Account	Pay Application #10	1/30/2026	22,601.36												
Retention Accrual Account	Pay Application #11	2/28/2026	15,793.24												
<b>Total Retention Accrual:</b>			<b>345,945.06</b>												
<b>CONSTRUCTION OTHER (620003) - Non-State Supportable</b>															
<b>Testing/Inspection</b>															
Guzi-West Inspection & Consulting	HazMat Abatement Assessment	5/19/2020							2,300.00						
Pern Laughlin (#9817)	Inspection Services - Demolition/Hazmat Abatement	7/31/2024							5,000.00						
Guzi-West Inspection & Consulting (#9965)	Asbestos & Lead Consulting	10/15/2024							20,180.61						
Mid Pacific Engineering	Progress payment	5/31/2025							3,120.06						
Mid Pacific Engineering	Progress payment	6/30/2025							2,705.88						
Mid Pacific Engineering (#10708)	Materials HazMat testing	7/1/2025	1,541.21												
Mid Pacific Engineering	Progress payment	7/31/2025							4,422.75						
Mid Pacific Engineering	Progress payment	8/31/2025							5,901.33						
Mid Pacific Engineering	Progress payment	9/30/2025							4,854.47						
Mid Pacific Engineering	Progress payment	10/31/2025							1,206.60						
Mid Pacific Engineering	Progress payment	11/30/2025							3,400.50						
Mid Pacific Engineering	Progress payment	12/31/2025							624.10						
Mid Pacific Engineering	Progress payment	1/30/2026							1,124.10						
<b>Other Fees</b>															
<b>Buildings/Construction</b>															
Douglas Sherman	Partial payment	6/6/2024									3,080.00				
Frandsen Construction (#9475)	800 Building demolition work	6/26/2024									6,490.00				
PARC Environmental (#9862)	TSI Insulation for 800 Building	8/23/2024									21,032.39				
Highway Specialty Company (#9864)	Temporary fencing around 800 Building	8/27/2024									1,038.78				
PARC Environmental (#10222)	800 Building HVAC demolition work	5/27/2025									32,500.00				
Wike Restoration	Additional HazMat work	6/30/2025									14,024.00				
Rexel USA, Inc. (#10439)	Materials for 800 Building	7/1/2025	2,000.00												
Rexel Platt (#10670)	Materials for 800 Bldg data project	8/15/2025									405.71				
Wike Restoration (#10714)	HazMat remediation	8/22/2025									42,977.00				
<b>CONSTRUCTION CONTRACT - PARC Environmental</b>															
<b>CHANGE ORDERS (Original Contract Amt = \$417,000)</b>															
Change Order #1: Removal and remediation of an additional 7,500 SF of drywall		6/11/2024	6.93%								28,900.81				
<b>Cumulative Change Orders</b>			<b>6.93%</b>								<b>28,900.81</b>				
PARC Environmental	Pay Application #1	6/30/2024									325,584.77				
PARC Environmental	Pay Application #2	9/6/2024									60,971.00				
PARC Environmental	Pay Application #3 - Partial Retention Payout	4/8/2025									20,345.04				

800 BUILDING (INSTRUCTIONAL CLASSROOMS) RENOVATION (20-003)			Encumbrances	Bond Program Mgmt	Service Fees	Software License	Site Improvements	Architectural/ Engineering	Testing/ Inspection	Other Fees	Buildings/ Construction	Technology Equipment	Furniture, Fixtures & Equipment	Contingency	TOTAL
Expense Description	DATE		212000	573000	578001	612000				620000		640000/649000	640001/649001	8%	
PARC Environmental	Pay Application #4	5/29/2025									31,255.00				
PARC Environmental (#10680)	Hazardous Materials Abatement	7/1/2025	12,118.55												
PARC Environmental	Pay Application #5	8/15/2025									10,561.61				
<b>Retention Accrual</b>															
PARC Environmental	Pay Application #1	6/30/2024	17,136.04												
PARC Environmental	Pay Application #2	9/6/2024	3,209.00												
PARC Environmental	Pay Application #3 - Partial Retention Payout	4/8/2025	(20,345.04)												
PARC Environmental	Pay Application #4	5/29/2025	1,645.00												
PARC Environmental	Pay Application #5	8/15/2025	555.88												
<b>Total Retention Accrual:</b>			<b>2,200.88</b>												
<b>Furniture, Fixtures &amp; Equipment</b>															
One Workplace (#9351)	Pilot furniture	4/24/2024											19,118.69		
<b>Technology Equipment &lt;\$5000 (640000)</b>															
Ams.net (#10759)	Progress Payment	10/15/2025										40,157.10			
Ams.net (#10759)	Verkada System	11/12/2025										5,795.23			
AMS.net (#137487)	Networking equipment	3/2/2026	26,761.71												
Dell Computer (#137533)	Classroom technology equipment	3/5/2026	45,220.20												
B&H Photo (#137602)	Projector and projection screens	3/10/2026	55,495.10												
B&H Photo (#137610)	Televisions and hovercams	3/10/2026	9,682.54												
Immer1 Technology (#137484)	Networking equipment	3/26/2026										2,953.65			
Immer1 Technology (#137486)	Networking equipment	3/26/2026										7,598.40			
<b>Furniture, Fixtures &amp; Equipment &lt;\$5000 (640001)</b>															
Sedia Systems (#10780)	Lecture hall seating and tables 640001	9/4/2025	67,838.66												
Sedia Systems (#10780)	Progress Payment	10/15/2025											98,838.66		
Affordable Interior Systems (#10953)	Outdoor furniture	1/5/2026	8,843.30												
Belson Outdoor, LLC (#10955)	Outdoor benches	1/21/2025											6,675.85		
Caliber Office (#11041)	Furniture textiles	2/12/2026	2,240.41												
Affordable Interior Systems (#11060)	Furniture for 800 Building interior	2/23/2026	55,411.39												
Anthro Int./Strmatic (#11061)	Furniture for 800 Building interior	2/23/2026	127,639.51												
WB Manufacturing	Furniture for 800 Building interior	2/23/2026	133,085.99												
<b>Technology Equipment &gt;\$5000 (649000)</b>															
Ams.net (#10759)	Verkada System	10/15/2025										38,135.04			
<b>TOTAL - 71624</b>			<b>1,432,023.83</b>	<b>229,453.83</b>	<b>72,723.77</b>	<b>29,465.10</b>	<b>17,323.54</b>	<b>942,800.00</b>	<b>165,210.53</b>	<b>0.00</b>	<b>7,145,052.68</b>	<b>94,639.42</b>	<b>124,633.20</b>	<b>0.00</b>	<b>8,821,302.07</b>
														Encumbrances	<b>1,432,023.83</b>
<b>Budget Remaining</b>															<b>1,084,374.10</b>
	<b>Expenditures Submitted for State Reimbursement (Inv. #5399)</b>	<b>6/30/2022</b>	<b>\$257,000.00</b>												(Received 8/22)
	<b>Expenditures Submitted for State Reimbursement (Inv. #5736)</b>	<b>1/11/2024</b>	<b>\$225,000.00</b>												(Received 1/24)
	<b>Expenditures Submitted for State Reimbursement (Inv. #5960)</b>	<b>9/2/2025</b>	<b>\$2,847,349.00</b>												(Received 9/25)
	<b>Expenditures Submitted for State Reimbursement (Inv. #5996)</b>	<b>12/17/2025</b>	<b>\$2,323,327.00</b>												(Received 12/25)



1600 BUILDING (LIFE SCIENCES) RENOVATION (21-002)			Encumbrances	Bond Program Mgmt	Architectural/ Engineering	Testing/ Inspection	Other Fees	Buildings/ Construction	Contingency	TOTAL
	Expense Description	DATE		212000	620000				7%	
INITIAL BUDGET					100,000.00					100,000.00
Budget Adjustment (staff and other ancillary costs)		7/31/2025		130,000.00						130,000.00
Budget Adjustment - State Funding Total (Preliminary Plans)		7/31/2025			457,000.00	23,600.00	242,400.00			723,000.00
Budget Adjustment - State Funding Total (Working Drawings)		7/31/2025			522,000.00		188,000.00			710,000.00
Interest Proceeds										
ADJUSTED BUDGET				130,000.00	1,079,000.00	23,600.00	430,400.00			1,663,000.00
<b>Bond Program Management</b>										
2020-2021 Staff Expenses				7,740.57						
2021-2022 Staff Expenses				4,578.35						
2025-2026 Staff Expenses (QUARTER 1)				5,526.50						
2025-2026 Staff Expenses (QUARTER 2)				5,679.35						
2025-2026 Staff Expenses (QUARTER 3)				17,034.95						
<b>PRELIMINARY PLANS (620000) - Architectural/Engineering, Testing/Inspection, Other Fees</b>										
Nichols, Melburg & Rossetto	Progress Payment	4/30/2021			19,277.50					
Nichols, Melburg & Rossetto	Progress Payment	5/31/2021			9,127.50					
Nichols, Melburg & Rossetto	FINAL PAYMENT	6/30/2021			32,445.00					
Nichols, Melburg & Rossetto	Progress Payment	12/31/2025			114,250.00					
Nichols, Melburg & Rossetto	Progress Payment	1/31/2026			159,950.00					
Nichols, Melburg & Rossetto	Final Preliminary Plans Payment	2/28/2026			182,800.00					
<b>Testing/Inspection</b>										
Guzi-West Inspection & Consulting (#115716)	HazMat Abatement Assessment	11/29/2021				2,500.00				
<b>Other Fees</b>										
<b>Buildings/Construction</b>										
<b>TOTAL - 71694</b>			<b>0.00</b>	<b>40,559.72</b>	<b>517,850.00</b>	<b>2,500.00</b>	<b>0.00</b>	<b>0.00</b>	<b>0.00</b>	<b>560,909.72</b>
									<b>Encumbrances</b>	<b>0.00</b>
<b>Budget Remaining</b>	<b>Retention Accrual:</b>	<b>0.00</b>								<b>1,102,090.28</b>

700 BUILDING RENOVATION (ADMINISTRATIVE OFFICES) (23-006)			Encumbrances	Bond Program Mgmt	Service Fees	Architectural/Engineering	Testing/Inspection	Other Fees	Buildings/Construction	Technology	FFE	Contingency	TOTAL
Expense Description	DATE		212000	573000	620000			640000/649000	640001/649001	10%			
INITIAL BUDGET						405,700.00	350,000.00		2,500,000.00	400,000.00	125,000.00	405,700.00	4,186,400.00
Budget Adjustment for Additional Scope of Work - Design & Engineering (ASR #1 & #2)	6/28/2024					104,150.00							104,150.00
Budget Adjustment for Estimated Increase in Construction Costs due to Revised Scope	7/31/2024								1,000,000.00				1,000,000.00
Budget Adjustment to Approved Bid Amount	5/14/2025								557,000.00				557,000.00
<b>BUDGET SUBTOTAL</b>						509,850.00	350,000.00		4,057,000.00	400,000.00	125,000.00	405,700.00	5,847,550.00
Scheduled Maintenance Funds Allocation	11/1/2022								(1,000,000.00)				(1,000,000.00)
Scheduled Maintenance Funds Allocation withdrawn by State	9/30/2023								1,000,000.00				1,000,000.00
Scheduled Maintenance Funds Allocation	3/31/2026								149,940.00				149,940.00
<b>ADJUSTED BUDGET (net Bond funds utilized)</b>						509,850.00	350,000.00	0.00	4,206,940.00	400,000.00	125,000.00	405,700.00	5,997,490.00
<b>CHANGE ORDER REQUESTS (Original Contract Amt = \$4,057,000 / Contractor: Gifford Construction, Inc.)</b>													
COR #01: Reframe existing conduit column in staff lounge	9/29/2025		0.04%						1,550.67				
COR #02: Replace additional carpet in I.T. area	10/3/2025		0.66%						26,701.00				
COR #03: Align carpet in Administration area with campus standard	2/5/2026		0.30%						12,029.01				
COR #04: Plumbing for sink in second floor conference room	10/14/2025		0.22%						9,000.89				
COR #05: Replace malfunctioning HVAC valves	11/13/2025		0.16%						6,520.21				
COR #06: Adjust roof drainpipe hangers due to new HVAC ducting	11/11/2025		0.01%						410.55				
COR #07: Relocate HVAC VRF from roof to ground	12/23/2025		0.45%						18,451.81				
COR #09: Painting areas added to scope of work	11/17/2025		0.43%						17,340.56				
COR #10: Replace storefront wood trim with drywall	11/18/2025		-0.10%						(4,200.00)				
COR #11: Add french drain at east side of building exterior	11/21/2025		0.47%						19,242.74				
COR #12: Add asphalt patch at ADA parking	12/1/2025		0.06%						2,333.34				
COR #13: Electrical and data changes per District request	2/4/2026		3.82%						155,178.43				
COR #14: Add second floor windows	1/5/2026		1.20%						48,644.97				
COR #15: Credit for UPS withdrawn from scope of work	12/9/2025		-3.45%						(139,774.86)				
COR #16: Revise casework and add plumbing for dishwasher	12/11/2025		0.06%						2,441.51				
COR #17: New coil kit for ERV	1/15/2026		0.02%						939.80				
COR #19: Provide additional HVAC connection component	2/4/2026		0.05%						1,835.68				
COR #21: Reseal roof (expensed to Scheduled Maintenance)	2/20/2026		3.70%						149,940.00				
COR #22: Reconfigure HVAC returns for fire compliance	3/2/2026		0.63%						25,524.02				
COR #23: Staff break room revisions per District request	3/2/2026		0.18%						7,350.62				
COR #24: Items beyond the construction contract scope	3/20/2026		0.21%						8,374.57				
Please note: Change Order Request #8, #18 and #20 are denied.													
<b>Cumulative Change Order Requests</b>			9.12%						369,835.52				
<b>Bond Program Management</b>													
2022-2023 Staff Expenses				3,833.20									
2023-2024 Staff Expenses				60,955.73									
2024-2025 Staff Expenses				62,460.62									
2025-2026 Staff Expenses (QUARTER 1)				16,579.51									
2025-2026 Staff Expenses (QUARTER 2)				17,038.05									
2025-2026 Staff Expenses (QUARTER 3)				17,034.95									
<b>Service Fees</b>													
Zanna Fuller Designs	50% deposit	6/24/2025			5,000.00								
Zanna Fuller Designs (#10792)	Encumbrance - Interior Design fees	7/1/2025	5,000.00										
Stephens Electrical (#11055)	Encumbrance - Installation of UPS unit	2/23/2026	25,000.00										
Esplanade Office (#11069)	Encumbrance - Furniture Installation	2/27/2026	28,539.22										
Esplanade Office	Furniture Installation deposit	3/2/2026			28,539.23								
<b>Architectural/Engineering</b>													
Nichols, Melburg & Rossetto	Progress Pmt	8/31/2023				5,625.00							
Nichols, Melburg & Rossetto	Progress Pmt	9/30/2023				8,847.50							
Nichols, Melburg & Rossetto	Progress Pmt	10/31/2023				10,903.75							
Nichols, Melburg & Rossetto	Progress Pmt	11/30/2023				12,123.75							
Nichols, Melburg & Rossetto	Progress Pmt	1/31/2024				17,500.00							
Nichols, Melburg & Rossetto	Progress Pmt	2/29/2024				35,000.00							
Division of State Architect (#131204)	DSA Fees	7/31/2024				36,900.00							
Nichols, Melburg & Rossetto	Progress Pmt	7/31/2024				81,405.00							
Nichols, Melburg & Rossetto	Progress Pmt	8/31/2024				57,745.00							
Nichols, Melburg & Rossetto	Progress Pmt	9/30/2024				31,250.00							
Nichols, Melburg & Rossetto	Progress Pmt	10/31/2024				15,625.00							
Nichols, Melburg & Rossetto	Progress Pmt	11/30/2024				15,625.00							
Nichols, Melburg & Rossetto	Progress Pmt	4/30/2025				8,750.00							
Nichols, Melburg & Rossetto	Progress Pmt	5/31/2025				3,750.00							
Nichols, Melburg & Rossetto	Progress Pmt	6/30/2025				4,200.00							
Nichols, Melburg & Rossetto (#10720)	Architectural Fees	7/1/2025	22,700.00										
Nichols, Melburg & Rossetto	Progress Pmt	9/30/2025				900.00							
Nichols, Melburg & Rossetto	Progress Pmt	10/31/2025				3,150.00							
Nichols, Melburg & Rossetto	Progress Pmt	11/30/2025				2,250.00							
Nichols, Melburg & Rossetto	Progress Pmt	12/31/2025				1,350.00							

700 BUILDING RENOVATION (ADMINISTRATIVE OFFICES) (23-006)			Encumbrances	Bond Program Mgmt	Service Fees	Architectural/ Engineering	Testing/ Inspection	Other Fees	Buildings/ Construction	Technology	FFE	Contingency	TOTAL
Expense Description	DATE		212000	573000			620000			640000/649000	640001/649001	10%	
<b>Nichols, Melburg &amp; Rossetto</b>	Progress Pmt	1/31/2026				33,200.00							
<b>Testing/Inspection</b>													
Pern Lauglin (#10504)	DSA Inspection Services	7/1/2025	12,000.00										
Guzi-West (#10698)	Hazmat Testing	8/14/2025	8,067.22										
Pern Lauglin	Progress Pmt	9/8/2025					10,000.00						
Mid Pacific Engineering (#10842)	Materials Testing & Inspection	10/1/2025	4,931.14										
Pern Lauglin	Progress Pmt	10/20/2025					10,000.00						
Mid Pacific Engineering	Progress Pmt	10/20/2025					1,288.76						
Guzi-West	Progress Pmt	11/5/2025					6,032.78						
Pern Lauglin	Progress Pmt	11/21/2025					10,000.00						
Mid Pacific Engineering	Progress Pmt	11/24/2025					681.60						
Pern Lauglin	Progress Pmt	1/9/2026					10,000.00						
Mid Pacific Engineering	Progress Pmt	1/21/2026					4,798.70						
Pern Lauglin	Progress Pmt	2/12/2026					10,000.00						
Mid Pacific Engineering	Progress Pmt	3/9/2026					2,387.30						
Mid Pacific Engineering	Progress Pmt	3/17/2026					912.50						
Pern Lauglin	Progress Pmt	3/19/2026					10,000.00						
<b>Other Fees</b>													
Redding Countertops (#11023)	Restroom countertops	2/4/2026	7,937.00										
Hanes Floor, Inc. (#11024)	Flooring	2/4/2026	10,897.00										
American Sheet Metal Partition (#11025)	Restroom stall partitions	2/4/2026	14,381.00										
Eric Ross Tile (#11050)	Restroom tile	2/19/2026	42,113.00										
Pace Supply (#137402)	Restroom flush valves & sink faucets	2/23/2026	2,956.23										
Sherwin Williams (#137758)	Paint for IT area	3/24/2026					4,085.80						
Cascade Paint (#137741)	Paint for IT area	3/24/2026					494.56						
<b>CONSTRUCTION CONTRACT - Gifford Construction, Inc. - Contract Amount = \$4,057,000</b>													
Gifford Construction (#10682)	BPO Encumbrance	8/1/2025	386,156.29										
Gifford Construction	Pay Application #1	7/31/2025							52,915.00				
Gifford Construction	Pay Application #2	8/31/2025							232,512.50				
Gifford Construction	Pay Application #3	9/30/2025							852,340.00				
Gifford Construction	Pay Application #4	10/31/2025							611,325.00				
Gifford Construction	Pay Application #5	11/30/2025							534,090.00				
Gifford Construction	Pay Application #6	12/31/2025							450,059.61				
Gifford Construction	Pay Application #7	1/30/2026							406,272.38				
Gifford Construction	Pay Application #8	2/28/2026							347,787.03				
<b>Retention Accrual</b>													
Retention Accrual Account	Pay Application #1	7/31/2025	2,785.00										
Retention Accrual Account	Pay Application #2	8/31/2025	12,237.50										
Retention Accrual Account	Pay Application #3	9/30/2025	44,860.00										
Retention Accrual Account	Pay Application #4	10/31/2025	32,175.00										
Retention Accrual Account	Pay Application #5	11/30/2025	28,110.00										
Retention Accrual Account	Pay Application #6	12/31/2025	23,687.35										
Retention Accrual Account	Pay Application #7	1/30/2026	21,382.76										
Retention Accrual Account	Pay Application #8	2/28/2026	18,304.58										
<b>Total Retention Accrual:</b>	<b>183,542.19</b>												
<b>Technology Equipment &lt;\$5000 (640000)</b>													
AMS.net (#137607)	Networking equipment	3/10/2026								40,217.34			
Immer1 Technology (#137608)	Wireless access points	3/10/2026								7,598.40			
<b>Technology Equipment &gt;\$5000 (649000)</b>													
Nationwide Power Solutions, Inc. (#136809)	UPS Unit	2/19/2026								72,348.88			
<b>Furniture, Fixtures &amp; Equipment &lt;\$5000 (640001)</b>													
Anthro Int/Sitmatic (#11068)	Encumbrance - Furniture	2/27/2026	18,243.60										
Esplanade Office (#11069)	Encumbrance - Furniture	2/27/2026	43,886.35										
Esplanade Office	Furniture deposit	3/2/2026									43,886.35		
SentrySafe.com (Cal Card)	Fireproof document safe for 700 Bldg	3/5/2026									61.12		
Sportsman Warehouse (Cal Card)	Standard safe for 700 Bldg	3/5/2026									965.24		
KI Furniture (#11070)	Encumbrance - Furniture	3/9/2026	288,682.83										
Uline (#11102)	Encumbrance - Furniture	3/24/2026	14,315.93										
<b>Furniture, Fixtures &amp; Equipment &gt;\$5000 (649001)</b>													
<b>TOTAL - 71695</b>			<b>1,119,349.00</b>	<b>177,902.06</b>	<b>33,539.23</b>	<b>386,100.00</b>	<b>80,682.00</b>	<b>0.00</b>	<b>3,487,301.52</b>	<b>120,164.62</b>	<b>44,912.71</b>	<b>0.00</b>	<b>4,330,602.14</b>
<b>Budget Remaining</b>													<b>Encumbrances 1,119,349.00</b>
													<b>547,538.86</b>

SC MAIN CAMPUS FIBER PROJECT - PHASES 2 & 3 (22-010)			Encumbrances	Bond Program Mgmt	Site Improvement s	Architectural/ Engineering	Testing/ Inspection	Other Fees	Buildings/ Construction	Contingency	TOTAL
Expense Description	DATE		212000	612000	620000					10%	
INITIAL BUDGET				315,000.00					28,500.00	31,500.00	375,000.00
Interest Proceeds											
ADJUSTED BUDGET				315,000.00					28,500.00	31,500.00	375,000.00
<b>Bond Program Management</b>											
2021-2022 Staff Expenses	District Wide Projects			1,815.77							
2022-2023 Staff Expenses	District Wide Projects			12,830.18							
2023-2024 Staff Expenses	District Wide Projects			10,032.20							
2024-2025 Staff Expenses	District Wide Projects			24,101.70							
2025-2026 Staff Expenses (QUARTER 1)	District Wide Projects			11,053.01							
2025-2026 Staff Expenses (QUARTER 2)	District Wide Projects			5,679.35							
2025-2026 Staff Expenses (QUARTER 3)	District Wide Projects			5,678.32							
<b>Architectural/Engineering</b>											
<b>Testing/Inspection</b>											
<b>Other Fees</b>											
<b>Buildings/Construction</b>											
World Telecom, Inc. (#120546)	Fiber cable run from Athletic Fieldhouse to Press Box	8/29/2022			5,450.35						
World Telecom, Inc. (#8552)	Final Payment	1/3/2023			24,017.53						
World Telecom, Inc. (#9321)	Fiber cable run from 700 Bldg to 1800 Bldg	1/22/2024			31,066.26						
World Telecom, Inc. (#10678)	Construction contract - Fiber Phase II	8/8/2025	2,994.82								
World Telecom, Inc. (#10692)	Fiber cable run for 300 Bldg	8/19/2025			9,860.08						
World Telecom, Inc. (#10678)	Construction contract - Fiber Phase II	8/28/2025			49,493.16						
World Telecom, Inc. (#10789)	Fiber replacement to the 800 Bldg	9/5/2025	7,286.09								
World Telecom, Inc. (#10789)	Progress payment	11/21/2025			7,286.09						
<b>TOTAL - 71696 (Formerly 71631)</b>			<b>10,280.91</b>	<b>71,190.53</b>	<b>127,173.47</b>	<b>0.00</b>	<b>0.00</b>	<b>0.00</b>	<b>0.00</b>	<b>0.00</b>	<b>198,364.00</b>
<b>Budget Remaining</b>	<b>Retention Accrual:</b>	<b>0.00</b>								<b>Encumbrances</b>	<b>10,280.91</b>
											<b>166,355.09</b>

SPACE REFRESH (24-002)			Encumbrances	Bond Program Mgmt	Service Fees	Architectural/ Engineering	Testing/ Inspection	Other Fees	Buildings/ Construction	Infrastructure	FFE	Contingency	TOTAL
Expense Description	DATE		212000	573000	620000			612000	640000/649000	10%			
INITIAL BUDGET									500,000.00				500,000.00
Budget Augment - Transferred from CLC Purchase Closeout	1/31/2026												100,000.00
Interest Proceeds													
ADJUSTED BUDGET									500,000.00				600,000.00
<b>Bond Program Management</b>													
2023-2024 Staff Expenses				45,400.36									
2024-2025 Staff Expenses				62,460.62									
2025-2026 Staff Expenses (QUARTER 1)				11,053.01									
2025-2026 Staff Expenses (QUARTER 2)				17,038.05									
<b>Service Fees</b>													
KI (#131152)	Furniture installation fees	7/30/2024			19,197.75								
Caliber Office Furniture (#131237)	Labor fees for furniture installation	8/5/2024			340.00								
Caliber Office Furniture (#131310)	Labor fees for furniture installation	10/14/2024			340.00								
<b>Architectural/Engineering</b>													
<b>Testing/Inspection</b>													
<b>Other Fees</b>													
<b>Buildings/Construction</b>													
TRC Electronics	Electrical parts for 1400 Refresh	2/24/2024							151.64				
Sherwin Williams	Paint for Cadaver Room Refresh	2/26/2024							44.19				
Hanes Floor, Inc. (#9322)	Flooring for 166 Bldg - Cadaver Room	2/27/2024							5,852.00				
Rexel USA, Inc./Platt (#9377)	Electrical Supplies - Cadaver Room	3/11/2024							1,978.77				
Rexel USA, Inc./Platt (#9373)	Electrical Supplies - 400 Bldg Refresh	3/25/2024							3,032.68				
Rexel USA, Inc./Platt (#9404)	Electrical Supplies - Classroom Refresh	3/25/2024							657.50				
Western Glass (#129418)	Glass for 1400 Bldg Refresh	4/2/2024							86.01				
Rexel USA, Inc./Platt (#9404)	Electrical Supplies - Classroom Refresh	5/6/2024							130.86				
Frandsen Construction, Inc. (#129850)	Remove step at 400 Bldg for ADA access	5/7/2024							9,187.08				
Rexel USA, Inc./Platt (#9404)	Electrical Supplies - Classroom Refresh	5/20/2024							718.55				
J's Quality Custom Painting (#9416)	Room 1411 painting	5/30/2024							2,250.00				
Frandsen Construction, Inc. (#9473)	1300 Building floor patch	6/21/2024							495.00				
J's Quality Custom Painting (#9416)	400 Building lecture classroom painting	6/25/2024							7,500.00				
Frandsen Construction, Inc. (#9474)	400 Building space refresh work	6/25/2024							15,123.56				
Frandsen Construction, Inc. (#9476)	Room 1411 space refresh work	6/25/2024							2,595.13				
Hanes Floor, Inc. (#9403)	Flooring Supplies - Classroom Refresh	6/30/2024							2,013.00				
Hanes Floor, Inc. (#9460)	Flooring Supplies - Classroom Refresh	6/30/2024							24,950.00				
J's Quality Custom Painting (#9762)	Paint handrails in Theater	8/12/2024							750.00				
Hanes Floor, Inc. (#9641)	Flooring Supplies - Classroom Refresh	8/14/2024							4,583.00				
Rexel USA, Inc./Platt	Electrical Supplies - Classroom Refresh	8/23/2024							163.03				
Frandsen Construction, Inc. (#9852)	ADA Handrails in 400 Bldg	8/30/2024							1,219.75				
J's Quality Custom Painting (#131966)	Painting areas at Theater, 100 & 2200 Bldgs	10/8/2024							600.00				
Rexel USA, Inc./Platt	Electrical Supplies - Classroom Refresh	10/21/2024							265.74				
Budget Blinds (#9761)	Window Coverings - Classroom Refresh	10/22/2024							2,410.25				
J's Quality Custom Painting (#132924)	Powerwash/paint Bistro ext wall & stairs	1/14/2025							3,885.00				
Hanes Floor, Inc. (#133026)	Materials for Bistro refresh	1/15/2025							397.90				
Geary Pacific (#133142)	HVAC materials for 2100 Bldg offices	1/31/2025							841.35				
Builders Door & Window (#133147)	New doors for 2100 Bldg offices	1/31/2025							1,488.63				
Builders Door & Window (#133148)	New doors for 2100 Bldg offices	1/31/2025							1,890.82				
J's Quality Custom Painting (#10119)	Painting Rm. 2165	2/11/2025							3,225.00				
Rexel USA, Inc./Platt (#133499)	Electrical for data area in Rm. 2165	2/21/2025							2,379.66				
J's Quality Custom Painting	Progress payment	3/4/2025							8,135.00				
Frandsen Construction (#9979)	Add to diving walls in 2100 Bldg	3/7/2025							25,000.00				
Rexel USA, Inc./Platt (#9835)	Electrical items	3/7/2025							669.80				
Sunblockers (#10202)	Window tinting	4/22/2025							2,199.00				
Hanes Floor, Inc. (#10124)	Carpet for Rm. 2162 & 2165	4/22/2025							8,793.00				
Budget Blinds (#10157)	Window coverings - Student Cntr Stage	4/22/2025							3,862.68				
J's Quality Custom Painting	Progress payment	4/23/2025							3,850.00				
Hanes Floor, Inc. (#10243)	Cove base - Student Cntr Stage	5/6/2025							285.29				
Rexel USA, Inc./Platt	Electrical Supplies - Classroom Refresh	5/6/2025							316.90				
Hanes Floor	Flooring supplies	6/17/2025							1,072.50				
J's Quality Custom Painting	Progress payment	6/17/2025							6,500.00				
Wike Restoration (#10310)	Gym floor hazmat abatement	6/30/2025							21,525.00				
Hanes Floor, Inc. (#10264)	Coat concrete, install LVT & cove base	6/30/2025							19,990.00				
J's Quality Custom Painting (#10411)	Painting in various areas for refresh	7/1/2025	25,000.00										
J's Quality Custom Painting (#10762)	Exterior painting at 1900 & 2000 Bldg	8/28/2025	9,900.00										
Hanes Floor, Inc. (#10843)	Flooring materials	10/6/2025							184.04				
J's Quality Custom Painting (#10894)	Exterior painting at 900, 400, 500, 600 & 1200	11/21/2025							23,000.00				
J's Quality Custom Painting (#10762)	Progress payment	12/2/2025							14,500.00				

SPACE REFRESH (24-002)			Encumbrances	Bond Program Mgmt	Service Fees	Architectural/ Engineering	Testing/ Inspection	Other Fees	Buildings/ Construction	Infrastructure	FFE	Contingency	TOTAL
Expense Description	DATE		212000	573000	620000				612000	640000/649000	10%		
<b>Equipment under \$5,000</b>													
Home Depot (Cal Card)	Hallway cabinets for 1400 Bldg	2/24/2024									270.01		
KI (#129694)	Classroom furniture for 400 Bldg	6/17/2024									7,986.60		
AMS.net (#130670)	Emergency Notification Speaker, Rm. 2608	7/16/2024									1,159.05		
KI (#131152)	Classroom furniture for 400 Bldg	7/30/2024									60,655.24		
Affordable Interior Systems (#131034)	Furniture for 400 Bldg Refresh	7/30/2024									1,181.69		
Amazon.com (Cal Card)	Furniture caster wheels	8/5/2024									236.99		
Amazon.com (Cal Card)	Furniture caster wheels	8/5/2024									38.38		
Caliber Office Furniture (#131238)	Furniture for 400 Bldg Refresh	8/5/2024									1,580.90		
Affordable Interior Systems (#131312)	Furniture for 400 Bldg Refresh	10/10/2024									1,181.69		
Caliber Office Furniture (#131311)	Lecturn for 400 Bldg Refresh	10/14/2024									872.04		
Caliber Office Furniture (#131503)	Furniture for 400 Bldg Refresh	10/14/2024									699.38		
Rexel USA, Inc./Platt (#130972)	Light fixture for Theater refresh	10/17/2024									514.68		
Amazon.com (Cal Card)	Mini refrigerator for lactation room	10/3/2025									163.01		
Amazon.com (Cal Card)	Rocking chair for lactation room	10/3/2025									257.38		
<b>TOTAL - 71698</b>			<b>34,900.00</b>	<b>135,952.04</b>	<b>19,877.75</b>	<b>0.00</b>	<b>0.00</b>	<b>0.00</b>	<b>240,749.31</b>	<b>0.00</b>	<b>76,797.04</b>	<b>0.00</b>	<b>473,376.14</b>
<b>Budget Remaining</b>	<b>Retention Accrual:</b>	<b>0.00</b>										<b>Encumbrances</b>	<b>34,900.00</b>
													<b>91,723.86</b>

SC FIRE ACADEMY 6-STORY FIRE TOWER (24-009)			Encumbrances	Bond Program Mgmt	Service Fees	Infrastructure 612000	Architectural/ Engineering	Testing/ Inspection	Other Fees	Building Only	Construction/ Installation	Contingency	TOTAL
Expense Description	DATE		212000	573000					620000			10%	
INITIAL BUDGET							134,800.00	125,000.00		1,685,000.00	1,000,000.00	268,500.00	3,213,300.00
Interest Proceeds													
<b>BUDGET SUBTOTAL</b>							134,800.00	125,000.00		1,685,000.00	1,000,000.00	268,500.00	3,213,300.00
ZOGG Fire Settlement Funds Offset													(2,300,000.00)
<b>ADJUSTED BUDGET (net Bond funds utilized)</b>													913,300.00
<b>Bond Program Management</b>													
2024-2025 Staff Expenses				41,343.34									
2025-2026 Staff Expenses (QUARTER 1)				16,579.51									
2025-2026 Staff Expenses (QUARTER 2)				11,358.70									
2025-2026 Staff Expenses (QUARTER 3)				17,034.95									
<b>Architectural/Engineering</b>													
Nichols, Melburg & Rossetto	Progress payment	5/31/2025					8,055.00						
Nichols, Melburg & Rossetto	Progress payment	6/30/2025					32,220.00						
Nichols, Melburg & Rossetto (#10729)	Architectural Fees	7/1/2025	81,603.75										
Division of the State Architect (DSA)	DSA Review Fee	8/5/2025					20,077.74						
Mid Pacific Engineering (#10709)	Geotechnical engineering services	8/19/2025					11,000.00						
Nichols, Melburg & Rossetto	Progress payment	8/22/2025					100,687.50						
Nichols, Melburg & Rossetto	Progress payment	9/19/2025					46,987.50						
Nichols, Melburg & Rossetto	Progress payment	12/9/2025					3,356.25						
Mid Pacific Engineering	Progress payment	2/18/2026					5,500.00						
Nichols, Melburg & Rossetto	Progress payment	3/9/2026					24,990.00						
Mid Pacific Engineering	Final payment	3/17/2026					5,500.00						
<b>Other Fees</b>													
Department of Conservation (#135607)	Geological Survey	8/19/2025							4,800.00				
<b>Buildings/Construction</b>													
Fire Facilities, Inc. (#10685)	6-Story Fire Tower	7/1/2025	1,631,711.00										
Fire Facilities, Inc.	Progress payment	8/13/2025								100,000.00			
<b>TOTAL - 71680</b>			<b>1,713,314.75</b>	<b>86,316.50</b>	<b>0.00</b>	<b>0.00</b>	<b>258,373.99</b>	<b>0.00</b>	<b>4,800.00</b>	<b>100,000.00</b>	<b>0.00</b>	<b>0.00</b>	<b>449,490.49</b>
												Encumbrances	1,713,314.75
<b>Budget Remaining</b>	<b>Retention Accrual:</b>	<b>0.00</b>											<b>1,050,494.76</b>

SC MAIN CAMPUS KEYING & ACCESS CONTROL (18-010) [TAXABLE SERIES EXPENDITURES]			Encumbrances	Bond Program Mgmt	Architectural/ Engineering	Testing/ Inspection	Other Fees	Site Improvements	Buildings/ Construction	Contingency	TOTAL	
Expense Description	DATE			212000					612000 & 620000	10%		
PROJECT MOVED FROM NON TAXABLE SERIES	7/1/2024											
Interest Proceeds									374,997.70			374,997.70
ADJUSTED BUDGET									374,997.70			374,997.70
<b>Bond Program Management</b>												
2024-2025 Staff Expenses				19,131.53								
2025-2026 Staff Expenses (QUARTER 1)				11,053.01								
2025-2026 Staff Expenses (QUARTER 2)				5,679.35								
2025-2026 Staff Expenses (QUARTER 3)				5,678.32								
<b>Architectural/Engineering</b>												
<b>Buildings/Construction</b>												
LDHI Construction, Inc. (#9803)	Install card access control door hardware	1/10/2025							9,801.58			
Builders Door & Window (#133122)	Door hardware	1/22/2025							810.81			
Doug Sherman Electric (#10802)	Replace AMAG door access control panels	9/5/2025	6,830.00									
Doug Sherman Electric	Progress payment	9/15/2025							16,330.00			
Doug Sherman Electric	Progress payment	9/26/2025							1,840.00			
Foster Brothers Security Systems (#10889)	Clq key cylinders	10/30/2025	23,326.88									
<b>PHASE 3:</b>												
<b>CHANGE ORDERS (Original Contract Amt = \$338,362.36 / Contractor: World Telecom &amp; Surveillance, Inc.)</b>												
Change Order #1	Time extension to 3/31/23 for card reader delays	11/2/2022	0.00%	0.00								
Change Order #2	Time extension to 8/31/23 for card reader delays	4/6/2023	0.00%	0.00								
Change Order #3	Time extension to 12/31/23 for card reader delays	9/1/2023	0.00%	0.00								
<b>Cumulative Change Orders</b>			<b>0.00%</b>	<b>0.00</b>								
World Telecom & Surveillance, Inc. (#10292)	Purchase/Install AMAG Security Equipment	6/16/2025							12,489.00			
World Telecom & Surveillance, Inc.	Final retention payout	6/25/2025							16,700.08			
<b>Retention Accrual</b>												
Retention Accrual Account	Progress Pmt #1	5/24/2022	8,071.50									
Retention Accrual Account	Progress Pmt #2	6/21/2022	500.00									
Retention Accrual Account	Progress Pmt #3	1/25/2024	2,923.41									
Retention Accrual Account	Progress Pmt #4	5/14/2024	5,205.17									
World Telecom & Surveillance, Inc.	Final retention payout	6/25/2025	(16,700.08)									
<b>Total Retention Accrual:</b>			<b>0.00</b>									
<b>TOTAL - 71682</b>			<b>30,156.88</b>	<b>41,542.21</b>	<b>0.00</b>	<b>0.00</b>	<b>0.00</b>	<b>0.00</b>	<b>57,971.47</b>	<b>0.00</b>		<b>99,513.68</b>
										<b>Encumbrances</b>		<b>30,156.88</b>
<b>Budget Remaining</b>												<b>245,327.14</b>



Campus Wide Electrical Upgrades (18-009B) [TAXABLE SERIES EXPENDITURES]			Encumbrances	Bond Program Mgmt	Supplies	Service Fees	Architectural/ Engineering	Testing/ Inspection	Other Fees	Site Improvements	Buildings/ Construction	Contingency	
	Expense Description	DATE		212000	439903	573000			612003 / 640003 / 649003			10%	TOTAL
PROJECT MOVED FROM NON TAXABLE SERIES													513,497.23
Interest Proceeds													
ADJUSTED BUDGET													513,497.23
<b>Bond Program Management</b>													
2024-2025 Staff Expenses				45,842.58									
2025-2026 Staff Expenses (QUARTER 1)				11,053.01									
2025-2026 Staff Expenses (QUARTER 2)				5,679.35									
<b>Expenditures</b>													
Redding Crane Service (#131319)	Offload electrical transformer	8/14/2024				600.00							
Redding Crane Service (#131744)	Unload electrical cabinet	9/20/2024				500.00							
SnL Group, Inc. (#131747)	Unload and set XFMR for Substation F	9/20/2024								613.64			
Platt Electric - Rexel USA, Inc. (#9966)	Progress Pmt	10/15/2024								151,953.96			
Meyer Crane (#10082)	Crane setting of transformer	1/14/2025								1,400.00			
Stephens Electrical, Inc. (#9901)	Labor to set equipment on Substation F	2/21/2025								23,231.73			
A-1 Crane Service (#133554)	Crane to change out MVS switches on Substation D	2/28/2025								400.00			
Platt/Rexel USA, Inc (#132226)	Electrical switch for Substation D	3/18/2025								15,496.83			
Platt Electric - Rexel USA, Inc. (#9966)	Substations E & F Equipment	5/13/2025								88,373.70			
Stephens Electrical, Inc.	Install equipment on Substation F	7/1/2025	21,864.82										
Platt Electric - Rexel USA, Inc.	Eaton Lot MV Gear	8/15/2025								67,844.40			
Stephens Electrical, Inc.	Progress payment	11/3/2025								3,135.18			
<b>TOTAL - 71684</b>			<b>21,864.82</b>	<b>62,574.94</b>	<b>0.00</b>	<b>1,100.00</b>	<b>0.00</b>	<b>0.00</b>	<b>0.00</b>	<b>352,449.44</b>	<b>0.00</b>	<b>0.00</b>	<b>416,124.38</b>
												<b>Encumbrances</b>	<b>21,864.82</b>
<b>Budget Remaining - Campus Wide Electrical Upgrades</b>													<b>75,508.03</b>





PROPERTY PURCHASE - BLOCK 7 (SC Community Leadership Center)			FINAL		Encumbrances	Bond Program Management	Supplies	Legal Fees	Hardware Support	Service Fees	Software	Contract Price	Technology	Furniture, Fixtures & Equipment	Security Technology	Contingency 5%	TOTAL
Expense Description	Date		212000	439900	504300	541000	573000	578000	620000	640000/649000	640001/649001	640002					
<b>Technology Supplies (439900)</b>																	
ConvergeOne (#120883)	Firewalls & Support supplies	8/30/2022		207.81													
CDW Government Inc. (#123457)	Equipment for Meeting Rooms	3/30/2023		452.63													
FS.com, Inc. (#123646)	Transceiver module & cable	4/4/2023		2,083.22													
CDW Government Inc. (#123911)	Powerstrips	4/5/2023		1,079.88													
B&H Photo (#123956)	Webcam & Speakers	4/11/2023		2,861.50													
Markertek.com (#123644)	Analog output adapter	4/11/2023		209.44													
Edgeium, Inc. (#123643)	Stacking cables	4/12/2023		2,007.88													
Amazon.com	Ethernet cables	4/26/2023		775.82													
B&H Photo (#123461)	Equipment for Meeting Rooms	5/9/2023		788.26													
FS.com, Inc. (#124566)	Power cables	5/16/2023		257.40													
B&H Photo (#123950)	Digital to analog cable	5/16/2023		51.70													
B&H Photo (#124766)	USB adapter	5/24/2023		129.17													
B&H Photo (#124767)	Cable	5/24/2023		93.28													
Markertek.com (#124070)	USB adapter	5/26/2023		327.40													
Dell Computer (#123786)	Monitors	6/20/2023		1,389.96													
B&H Photo (#125094)	Webcameras	6/20/2023		916.82													
B&H Photo (#125073)	HDMI cables & adapters	6/20/2023		351.51													
CDW Government Inc. (#124765)	Video capture adapter	6/21/2023		459.48													
CDW Government Inc. (#125364)	Outlet surge	6/27/2023		607.08													
Dell Computer (#124886)	Server rack	6/27/2023		93.18													
IVCI, LLC. (#122095)	Extron Supplies - Board Room	6/30/2023		1,801.68													
IVCI, LLC. (#123065)	Extron supplies - Board Room	6/30/2023		1,842.70													
LBC Lighting Pros	Canopy for suspension cables	6/30/2023		64.00													
Amazon.com	Two USB hubs	6/30/2023		42.88													
Amazon.com (Cal Card)	Extension cords	7/11/2003		117.90													
Dell Computer (#125923)	Keyboards/mice	8/28/2023		1,915.49													
<b>Technology Support (541000)</b>																	
AMS.NET (#119436) P	VOIP CISCO Support	6/23/2022						379.14									
ConvergeOne (#120883)	Firewalls & Support	8/30/2022						7,470.00									
Immer1 Technology Group (#120038)P	Wireless Access Points (Support)	1/17/2023						776.80									
<b>Technology Service Fees (573000)</b>																	
AMS.NET (#119924) P	VOIP Hardware & Support	6/29/2022							805.00								
AMS.NET (#8499)	VOIP Hardware & Support	5/3/2023							322.00								
AMS.NET (#8499)	VOIP Hardware & Support	8/22/2023							2,093.00								
<b>Technology Software (578000)</b>																	
ConvergeOne (#120883)	Firewalls & Support	8/30/2022									24,164.50						
Immer1 Technology Group (#120038)P	Wireless Access Points (Software)	1/17/2023									952.00						
AMS.Net (#124242)	Cisco Essentials license	4/19/2023									9,636.00						
<b>Technology Equipment &lt;\$5,000 (640000)</b>																	
AMS.NET (#119436) P	VOIP Hardware	6/23/2022											4,090.94				
ConvergeOne (#120883)	Firewalls & Support	8/30/2022											7,150.64				
Immer1 Technology Group (#120038)P	Wireless Access Points (Equipment)	1/17/2023											11,660.22				
Dell Computer (#123104)	Network Servers	3/8/2023											6,327.54				
CDW Government Inc. (#123457)	Equipment for Meeting Rooms	3/30/2023											4,419.67				
Dell Computer (#123534)	Board Member laptops	4/3/2023											6,042.01				
AMS.net, Inc. (#123645)	CISCO Phones	3/9/2023											5,492.46				
Apple Education (#123566)	iPad	3/6/2023											403.68				
B&H Photo (#123956)	Laser printers	3/27/2023											1,646.16				
AMS.Net (#124242)	Networking equipment	4/19/2023											72,699.10				
Dell Computer (#123951)	Laptop computer	3/27/2023											1,666.94				
Dell Computer (#123954)	Desktop computers	3/27/2023											2,039.98				
Dell Computer (#123955)	Desktop computers	3/27/2023											3,059.96				
Dell Computer (#123952)	Desktop computers	3/27/2023											6,869.88				
B&H Photo (#123461)	Equipment for Meeting Rooms	5/9/2023											52,290.35				
B&H Photo (#123950)	LEDs & Wall mounts	5/16/2023											7,551.15				
B&H Photo (#124766)	Audio system equipment	5/24/2023											1,125.32				
B&H Photo (#124767)	Tracking web camera	5/24/2023											3,932.24				
CDW Government Inc. (#123957)	Document scanners	5/24/2023											1,867.71				
Dell Computer (#124567)	USB-C hub monitors	5/24/2023											11,336.25				
Dell Computer (#124575)	Laptop computer	5/24/2023											1,283.60				
Immer1 Technology Group (#124687)	Server racks	5/24/2023											12,792.65				
B&H Photo (#125094)	Laser printer	6/20/2023											438.67				
B&H Photo (#125095)	Scanners	6/20/2023											1,014.99				
B&H Photo (#125177)	Computer monitor	6/20/2023											355.25				
Dell Computer (#125072)	Docking station	6/20/2023											294.93				
Dell Computer (#123754)	Computer monitors	6/21/2023											23,526.00				
CDW Government Inc. (#124765)	Microphones	6/21/2023											4,318.84				
Dell Computer (#125182)	Laptop computers	6/26/2023											5,332.85				
Markertek.com (#124494)	Access point transceiver	6/30/2023											3,732.52				
CDW Government Inc. (#125386)	LCD Screen	6/30/2023											2,383.48				
IVCI, LLC. (#122095)	Extron equipment	6/30/2023											21,296.35				
IVCI, LLC. (#123065)	Extron equipment - Board Room	6/30/2023											18,510.09				
IVCI, LLC. (#123065)	Extron equipment - Board Room	7/13/2023											777.03				
IVCI, LLC. (#125960)	Extron equipment	7/28/2023											1,295.06				

PROPERTY PURCHASE - BLOCK 7 (SC Community Leadership Center)		FINAL	Encumbrances	Bond Program Management	Supplies	Legal Fees	Hardware Support	Service Fees	Software	Contract Price	Technology	Furniture, Fixtures & Equipment	Security Technology	Contingency 5%	TOTAL
Expense Description	Date		212000	439900	504300	541000	573000	578000	620000	640000/649000	640001/649001	640002			
Provantage LLC (#125750)	VoIP phones	8/8/2023									996.31				
Dell Computer (#126172)	Computer monitors	8/28/2023									653.50				
CDW Government (#125730)	Printer	10/11/2023									340.62				
Dell Computer (#127471)	Computer and mount	11/17/2023									885.89				
B&H Photo (#127800)	LED TV	12/11/2023									837.31				
Dell Computer (#125729)	Laptop computer	12/4/2023									1,766.01				
CDW Government Inc. (#128374)	Audio/visual equipment	1/29/2024									662.05				
Dell Computer (#128375)	Computer and mount	2/2/2024									852.64				
B&H Photo (#128376)	Display equipment	3/8/2024									837.31				
B&H Photo (#129801)	Display equipment	5/28/2024									2,042.68				
<b>Technology Equipment &gt;\$5,000 (649000)</b>															
IVC, LLC. (#122095)	Extron equipment	6/30/2023									6,821.63				
IVC, LLC. (#123065)	Extron equipment - Board Room	6/30/2023									12,499.45				
<b>Service Fees (573001)</b>															
Zanna Fuller Design	Design Svcs 50% deposit	4/3/2023						4,980.00							
Caliber Furniture (#122698)	Furnishings labor	6/26/2023						6,150.00							
Zanna Fuller Design (#9073)	Design Svcs - final payment	10/2/2023						4,260.00							
<b>Buildings (620000)</b>															
BLOCK 7 Retail Investors LLC (#8740)	Initial payment per contract	3/27/2023								775,242.55					
Partition Specialties, Inc. (#8676)	2nd Floor Skyfold Wall	4/28/2023									117,450.00				
BLOCK 7 Retail Investors LLC (#8740)	Progress payment	5/22/2023									227,282.12				
JR Stephens Company (#124445)	Cabinetry and countertop with install	6/30/2023									4,319.00				
JR Stephens Company, Inc. (#8739)	Cabinetry/storage	6/30/2023									5,806.00				
Carol's Lock & Key (Cal Card)	Block 7 keys	9/30/2023									32.28				
Budget Blinds of Redding (#126399)	Blinds for family services room	10/13/2023									700.35				
Carol's Lock & Key (Cal Card)	Block 7 bathroom keys	11/27/2023									26.31				
Wonderland Signs (#126349)	Interior signage	1/8/2024									3,293.45				
Signarama (#9025)	Exterior signage	1/11/2024									26,101.91				
Modern Building (#129745)	Ceiling tile repairs	4/24/2024									3,026.00				
World Telecom (#9289)	Medeco equipment	6/30/2024									6,020.80				
BLOCK 7 Retail Investors (#132923)	Final change order fees	1/7/2025									30,433.46				
BLOCK 7 Retail Investors LLC (#10080)	First Amend. to Const. Work Agrmt.	1/21/2025									77,200.34				
<b>Furniture, Fixtures &amp; Equipment Service Fees (573000)</b>															
One Workplace, Inc. (#8737)	Block 7 FFE Services - Delivery delay	4/3/2023						6,265.71							
One Workplace, Inc. (#121664) (#124883)	Block 7 FFE Services	5/5/2023						174,140.38							
One Workplace, Inc.	Block 7 FFE Services	8/17/2023						90,969.46							
Caliber Furniture (#126681)	Moving lockers at B7	9/18/2023						170.00							
One Workplace, Inc. (#128243)	Block 7 FFE Services - Deposit	1/4/2024						3,227.91							
One Workplace, Inc. (#128339)	Block 7 FFE Increased scope of work	2/6/2024						49,981.37							
One Workplace, Inc. (#128339)	Modern Building credit offset for increased scope of work	2/6/2024						(12,500.00)							
PNC Bank - Reimbursement #1	Reimbursement of excess funds	2/22/2024						(251,997.31)							
One Workplace, Inc. (#128243)	Block 7 FFE Services	3/4/2024						3,227.90							
Caliber Office Furniture (#128735)	Block 7 Furniture Shipping	5/16/2024						350.00							
Caliber Office Furniture (#128736)	Block 7 Furniture Labor/Installation	6/17/2024						2,400.00							
<b>Furniture, Fixtures &amp; Equipment &lt;\$5,000 (640001)</b>															
Wayfair.com (Cal Card)	Balcony furniture	12/31/2022										1,073.62			
Wayfair.com (Cal Card)	Family service room chair	12/31/2022										504.06			
Caliber Furniture (#122696)	Furnishings	1/24/2023										1,417.16			
Community Playthings (#120848)	Foster Kinship Children's Lab Furniture	5/2/2023										11,295.02			
Affordable Interior Systems (#122697)	Furnishings	5/2/2023										26,021.28			
One Workplace, Inc. (#121664) (#124883)	Block 7 FFE Furniture <\$5,000	5/5/2023										567,578.67			
Lowe's (Cal Card)	Storage cabinets	6/29/2023										767.91			
Lowe's (Cal Card)	Keyed padlocks for storage cabinets	6/29/2023										40.24			
Wayfair.com (Cal Card)	Furniture	6/29/2023										720.70			
Lowe's (Cal Card)	Microwave ovens	6/30/2023										1,070.36			
Amazon.com (Cal Card)	Furnishings	6/30/2023										22.40			
Amazon.com (Cal Card)	Furnishings	6/30/2023										199.68			
Amazon.com (Cal Card)	Furnishings	6/30/2023										1,050.98			
Amazon.com (Cal Card)	Furnishings	6/30/2023										89.93			
Lowe's (Cal Card)	Storage racks	6/30/2023										1,364.22			
Signarama (#124490)	Acrylic signage	6/30/2023										5,375.37			
One Workplace, Inc. (#121664) (#124883)	Block 7 FFE Furniture <\$5,000	8/17/2023										15,641.83			
Sunblockers (#8926)	Privacy/security window films	8/28/2023										4,818.00			
Staples (Cal Card)	Glass dry erase board	8/31/2023										717.91			
Lowe's (Cal Card)	Storage bookcases	8/31/2023										181.25			
Home Depot (Cal Card)	Storage racks	8/31/2023										852.64			
Redding Metal Crafters (#126889)	Stainless steel enclosures	10/24/2023										668.28			
Global Industries (Cal Card)	Hardware hooks	10/26/2023										124.61			
Global Industries (Cal Card)	Mobile glass board	10/26/2023										1,056.51			
Bed, Bath & Beyond (Cal Card)	Bathroom mirrors	10/26/2023										295.97			
Global Industries (Cal Card)	Mobile glass board	10/26/2023										1,056.51			
Amazon.com (Cal Card)	Kitchen cart storage	10/26/2023										150.12			
Wayfair.com (Cal Card)	Storage cabinet	10/26/2023										673.49			

PROPERTY PURCHASE - BLOCK 7 (SC Community Leadership Center)			FINAL											TOTAL	
Expense Description	Date	Encumbrances	Bond Program Management	Supplies	Legal Fees	Hardware Support	Service Fees	Software	Contract Price	Technology	Furniture, Fixtures & Equipment	Security Technology	Contingency 5%	TOTAL	
			212000	439900	504300	541000	573000	578000	620000	640000/649000	640001/649001	640002			
Amazon.com (Cal Card)	Trash cans	10/26/2023									193.00				
Amazon.com (Cal Card)	Trash cans	10/26/2023									193.00				
One Workplace	Classroom lecturn	11/17/2023									688.73				
Bed, Bath & Beyond (Cal Card)	Patio furniture	11/27/2023									716.35				
Amazon.com (Cal Card)	Furnishings	11/27/2023									228.42				
Amazon.com (Cal Card)	Privacy screens	11/27/2023									1,061.82				
Amazon.com (Cal Card)	Finishing frames	11/27/2023									21.44				
Amazon.com (Cal Card)	Glass whiteboard	11/27/2023									493.32				
Amazon.com (Cal Card)	Outdoor furniture	12/31/2023									96.32				
Wayfair.com (Cal Card)	Bookcases	12/31/2023									1,286.96				
One Workplace, Inc. (#128243)	Additional Furniture - 50% deposit	1/4/2024									6,144.53				
Wayfair.com (Cal Card)	Bookcase	1/26/2024									296.00				
PNC Bank - Reimbursement #1	Reimbursement of excess funds	2/22/2024									(146,844.26)				
Zoro Tools (Cal Card)	Block 7 Name plates	2/24/2024									105.81				
Vevor.com (Cal Card)	Block 7 Rolling magnetic whiteboard	2/24/2024									101.88				
Wayfair.com (Cal Card)	Block 7 Furnishings	2/24/2024									264.90				
Bed, Bath & Beyond (Cal Card)	Block 7 Furnishings	2/24/2024									647.52				
Global Industries (Cal Card)	Block 7 Furnishings	2/24/2024									59.49				
One Workplace, Inc. (#128243)	Additional Furniture	3/4/2024									6,144.59				
Wayfair.com (Cal Card)	Block 7 Furnishings	3/31/2024									150.14				
Wayfair.com (Cal Card)	Block 7 Furnishings	3/31/2024									168.95				
Affordable Interior Systems (#128734)	Block 7 Furniture	5/14/2024									12,833.09				
Caliber Office Furniture (#128735)	Block 7 Furniture	5/16/2024									5,645.38				
Caliber Office Furniture (#130391)	Block 7 Furniture - stackable chairs	6/10/2024									4,611.75				
Caliber Office Furniture (#9413)	Stmatic chair	6/17/2024									656.37				
Sunblockers (#9413)	Window films for Block 7	6/21/2024									10,999.00				
One Workplace, Inc. (#130148)	Block 7 Furniture - 5th floor	6/30/2024									3,827.04				
Ebay.com (Cal Card)	Block 7 Furniture	6/30/2024									5,136.55				
Amazon.com (Cal Card)	Block 7 Equipment	6/30/2024									498.33				
Caliber Office Furniture (#131033)	Glass transaction top	8/16/2024									1,978.16				
One Workplace (#132174)	Additional power units	11/21/2024									1,320.12				
PNC Bank - Reimbursement #2 (FINAL)	Final reimbursement of excess funds	3/5/2025									(3,458.25)				
<b>Furniture, Fixtures &amp; Equipment &gt;\$5,000 (649001)</b>															
One Workplace, Inc. (#121664) (#124883)	Block 7 FFE-\$5,000	5/5/2023									5,446.21				
<b>TOTAL - 71690</b>			<b>0.00</b>	<b>235,232.72</b>	<b>22,920.75</b>	<b>105,258.98</b>	<b>8,625.94</b>	<b>84,845.42</b>	<b>34,752.50</b>	<b>20,185,867.01</b>	<b>338,219.91</b>	<b>566,541.38</b>	<b>0.00</b>	<b>0.00</b>	<b>21,582,264.61</b>
<b>Budget Remaining</b>															<b>0.00</b>
<b>STRONG WORKFORCE PROGRAM (SWP) - ADDITIONAL FUNDING</b>															
Strong Workforce Program Funds - Community Education Classroom	6/30/2023	Furniture, Fixtures & Equipment									15,092.13				
Strong Workforce Program Funds - Community Education Classroom	6/30/2023	Technology Equipment									26,136.93				
		TOTAL SWP CONTRIBUTION									41,229.06				

SOLAR PROJECT - EAST LOT (18-017)			FINAL		Encumbrances	Bond Program Mgmt	Architectural/ Engineering	Testing/ Inspection	Other Fees	Site Improvements	Contingency	TOTAL
Expense Description	DATE		212000	612000							10%	
INITIAL BUDGET									129,647.80	5,518,502.00	551,850.20	6,200,000.00
Budget Adjustment (Due to PG&E interconnection/network upgrade fees)	10/31/2019											200,000.00
Interest Proceeds												
SUBTOTAL												6,400,000.00
Bond Project Reserve Allocation	10/31/2019									500,000.00		500,000.00
ADJUSTED BUDGET									129,647.80	6,018,502.00	551,850.20	6,900,000.00
<b>CHANGE ORDERS (Original Contract Amt = \$5,518,502 / Energy Service Provider: Sunpower)</b>												
Change Order #1	Increased pier depth	8/17/2018	2.57%							142,085.79		
Change Order #3	Dewatering/vacuum/redrill	12/7/2018	0.94%							51,748.24		
Change Order #4	Added design/installation	2/28/2019	2.09%							115,309.06		
Change Order #5	Contract time extension	5/30/2019	0.00%							0.00		
Change Order #7	Second power shutdown/repair corrosion	3/25/2020	0.55%							30,508.77		
Change Order #8	Wire and labor to repair corrosion issues	5/3/2020	0.37%							20,490.06		
Change Order #9	Contract time extension	11/4/2020	0.00%							0.00		
Change Order #10	Contract time extension	3/18/2021	0.00%							0.00		
Please note: Change Orders #2 and #6 were rejected.												
<b>Cumulative Change Orders</b>			<b>6.53%</b>							<b>360,141.92</b>		
<b>Bond Program Management</b>												
2017-2018 Staff Expenses						2,851.17						
2018-2019 Staff Expenses						12,433.43						
2019-2020 Staff Expenses						15,123.97						
2020-2021 Staff Expenses						18,234.29						
2021-2022 Staff Expenses						26,241.06						
2022-2023 Staff Expenses						41,402.66						
2023-2024 Staff Expenses						10,707.65						
2024-2025 Staff Expenses						28,006.78						
2025-2026 Staff Expenses (QUARTER 1)						16,579.51						
2025-2026 Staff Expenses (QUARTER 2)						279.71						
<b>Testing/Inspection</b>												
Mid Pacific Engineering, Inc.	Testing/Insp. Svcs.-Prog Pmt	10/22/2018						650.80				
Mid Pacific Engineering, Inc.	Testing/Insp. Svcs.-Prog Pmt	11/26/2018						8,450.30				
Pern Laughlin-DSA IOR	Insp. Svcs. - Progress Pmt	11/27/2018						9,350.00				
Pern Laughlin-DSA IOR	Insp. Svcs. - Progress Pmt	12/31/2018						4,080.00				
Pern Laughlin-DSA IOR	Insp. Svcs. - Progress Pmt	1/31/2019						3,060.00				
Mid Pacific Engineering, Inc.	Testing/Insp. Svcs.-Prog Pmt	1/31/2019						27,221.90				
Pern Laughlin-DSA IOR	Insp. Svcs. - Progress Pmt	2/28/2019						3,825.00				
Pern Laughlin-DSA IOR	Insp. Svcs. - Progress Pmt	3/31/2019						3,740.00				
Pern Laughlin-DSA IOR	Insp. Svcs. - Progress Pmt	4/20/2019						3,060.00				
Pern Laughlin-DSA IOR	Insp. Svcs. - Progress Pmt	5/24/2019						2,720.00				
Mid Pacific Engineering, Inc.	Testing/Insp. Svcs.-Prog Pmt	5/31/2019						894.50				
Pern Laughlin-DSA IOR	Insp. Svcs. - Progress Pmt	6/30/2019						2,210.00				
Mid Pacific Engineering, Inc.	Testing/Insp. Svcs.-Prog Pmt	6/30/2019						821.00				
Pern Laughlin-DSA IOR	Insp. Svcs. - Progress Pmt	7/31/2019						510.00				
Pern Laughlin-DSA IOR	Insp. Svcs. - Progress Pmt	8/31/2019						510.00				
Pern Laughlin-DSA IOR	Insp. Svcs. - Progress Pmt	9/30/2019						85.00				
Mid Pacific Engineering, Inc.	Testing/Insp. Svcs.-Prog Pmt	10/21/2019						1,050.00				
Pern Laughlin-DSA IOR	Insp. Svcs. - Progress Pmt	6/30/2020						340.00				
Mid Pacific Engineering, Inc.	Testing/Insp. Svcs.-Prog Pmt	3/31/2021						789.20				
Pern Laughlin-DSA IOR	Insp. Svcs. - Progress Pmt	4/30/2021						1,700.00				
Mid Pacific Engineering, Inc.	Testing/Insp. Svcs.-FINAL PMT	5/31/2021						223.80				
Pern Laughlin-DSA IOR	Insp. Svcs. - FINAL PMT	6/30/2021						850.00				
<b>Other Fees</b>												
PG & E (See PG&E 7/12/2021, below)	Interconnection Study Fee	4/24/2018							10,000.00			
Murley Consulting Group	Solar System Consulting Fee	4/25/2018							53,749.78			
PG & E	Self-Generation Inc. Prog Fee	5/22/2018							18,800.00			
Federal Express	Delivery Fees-PG&E Docs	5/31/2018							50.10			

