



# Shasta College

## Measure H Bond Projects & Capital Construction Update

---

Presented to the  
Facilities Planning Committee  
1/30/2026



# 800 Building (Instructional Classrooms) Remodel



New Metal Soffits  
and Wall Cladding



# 800 Building (Instructional Classrooms) Remodel *(continued)*



Lecture Hall



# 800 Building (Instructional Classrooms) Remodel *(continued)*



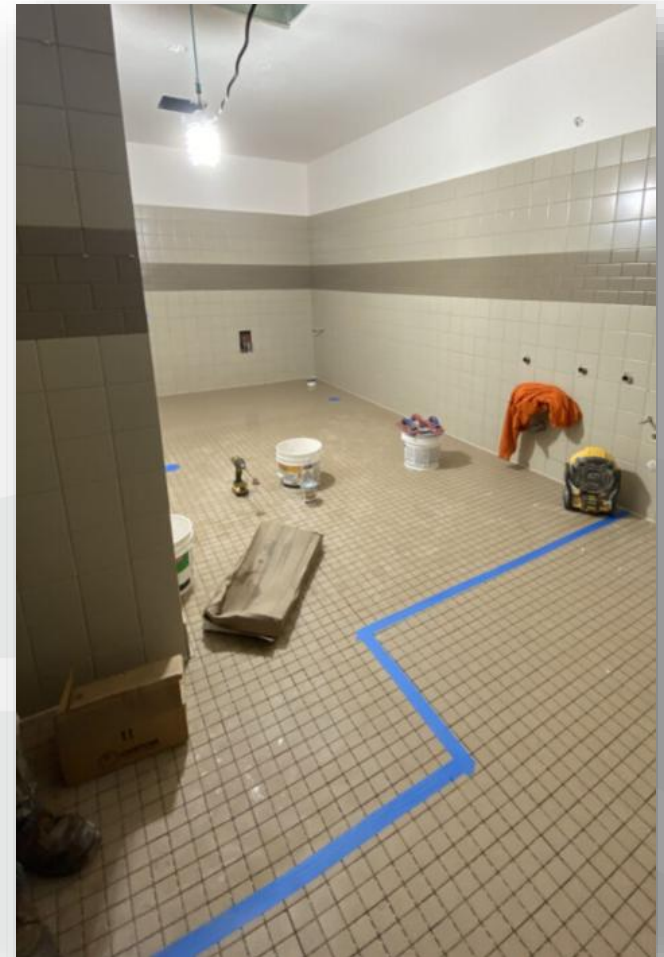
Future Student Lounge



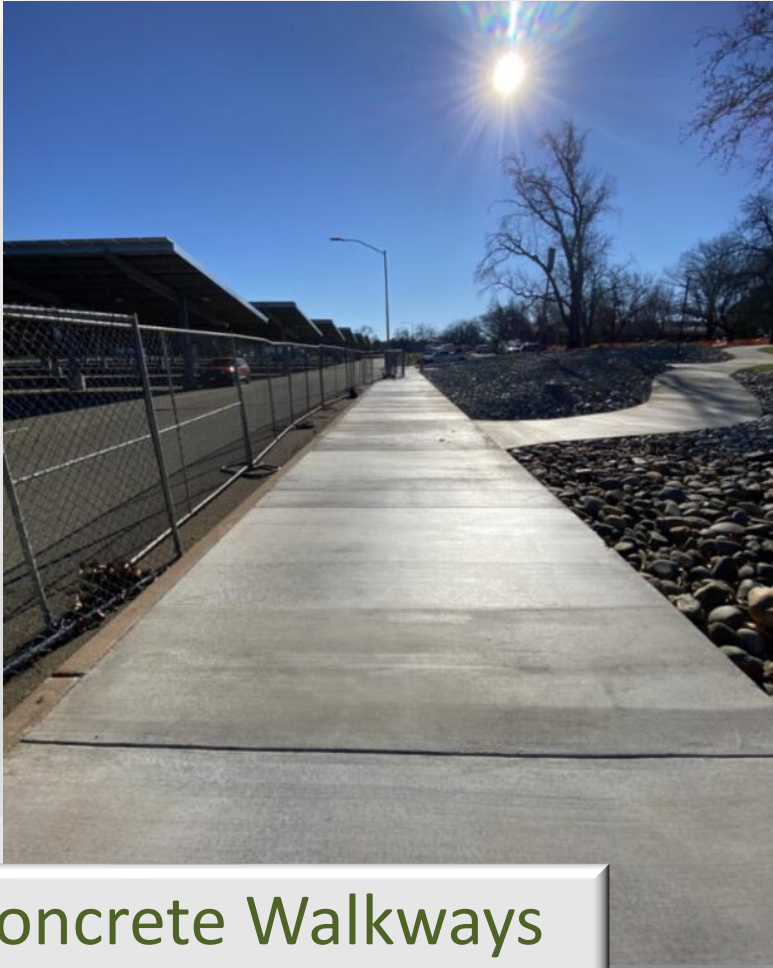
# 800 Building (Instructional Classrooms) Remodel *(continued)*



Faculty Offices



# 800 Building (Instructional Classrooms) Remodel *(continued)*



Concrete Walkways  
adjacent to the  
Sycamore Parking Lot



# 700 Building (Administrative Offices) Renovation



# 700 Building (Administrative Offices) Renovation *(continued)*



Human Resources  
Office



# 700 Building (Administrative Offices) Renovation *(continued)*



Central Areas  
between Office Pods



# 700 Building (Administrative Offices) Renovation *(continued)*



President's Office



2<sup>nd</sup> Floor Hallway



# 700 Building (Administrative Offices) Renovation *(continued)*



New 2<sup>nd</sup> Floor Windows



# 1600 Building Fire Lane



# 1600 Building Fire Lane *(continued)*



View North



# 1600 Building Fire Lane *(continued)*



View South



# Greenhouse Refurbishment



# Greenhouse Refurbishment *(continued)*



- Siding Replaced
- New Doors & Windows
- Upgraded Electrical
- New Lighting
- Upgraded Sink & Plumbing
- New WiFi Thermostats



# New Bond – November 2026

Support is over 80% voter approved threshold for the No Tax Increase option

## Shasta College District Bond Proceeds at Various Tax Rates as of 01/01/2026

Type of Bond Program	Tax Rate/ \$100,000	Series A 2027	Series B 2029	Series C 2031	Total Bond Proceeds
No Tax Increase <sup>(2)</sup>	\$15.50	\$33,405,000	\$36,000,000	\$48,630,000	\$118,035,000
New Tax Rate	\$12.00	\$51,195,000	\$49,380,000	\$54,325,000	\$154,900,000
New Tax Rate	\$25.00	\$97,550,000	\$94,065,000	\$104,440,000	\$296,055,000

(1) Assumes AV growth of 3.75% and 30 year bond terms.

(2) Represents projected tax rate for 2026-27



# For more information...



## About / Bond Projects / Measure H

Theresa Markword,  
AVP of Facilities &  
Capital Construction  
[tmarkword@shastacollege.edu](mailto:tmarkword@shastacollege.edu)  
(530) 242-7699

Isabella Greenleaf,  
Bond Project Coordinator  
[igreenleaf@shastacollege.edu](mailto:igreenleaf@shastacollege.edu)  
(530) 242-7978

Kacie Richardson,  
Bond Project Coordinator  
[krichardson@shastacollege.edu](mailto:krichardson@shastacollege.edu)  
(530) 242-7527

Magan Kleinman,  
Bond Program Fiscal Analyst  
[mkleinman@shastacollege.edu](mailto:mkleinman@shastacollege.edu)  
(530) 242-7747

Janette Brockmann,  
Bond Program Administrative Professional II  
[jbrockmann@shastacollege.edu](mailto:jbrockmann@shastacollege.edu)  
(530) 319-3214

