



Shasta College

Measure H Bond Projects & Capital Construction Update

Presented to the
Instructional Deans

11/20/2025



Facilities Assessment Results

$$\text{FCI} = \text{Repair Cost} / \text{Replacement Cost}$$

2022 Assessment

Shasta College			
Campus Information	Building Information	Room Information	
Gross Sq. Ft: 671,778		Facility Condition Index: 86.59%	Replacement Cost: \$318,698,589.55
Estimate Cost: \$175,414,115.67		Additional Cost: \$100,558,838.77	Repair Cost: \$275,972,954.44

2025 Assessment

Shasta College			
Campus Information	Building Information	Room Information	
Gross Sq. Ft: 674,402		Facility Condition Index: 74.12% ↓	↑ Replacement Cost: \$329,315,368.47
Estimate Cost: \$157,211,712.17		Additional Cost: \$90,143,988.66	↓ Repair Cost: \$247,355,700.83

The California Community College Chancellor's Office (CCCCO) Facility Condition Index (FCI) is a component used to score facility needs for capital outlay projects, with **higher scores indicating worse facility conditions** and prioritizing those projects.

PORTABLE BUILDING	5000	4,588	1964	CC Modular WF	\$355.00	\$2,758,666.83	\$1,631,613.85	169.08%
-------------------	------	-------	------	---------------	----------	----------------	----------------	----------------



Space Inventory Change

TOP Code to CIP Code

TOP Code: A system of numerical codes used by the California Community College system to collect and report information on programs and courses.

CIP Code: A US Department of Ed national standard for academic program titles used for federal surveys and state reporting of institutional data.

All spaces, including offices, meeting rooms, storage areas, etc. are assigned a TOP Code. For the buildings you oversee (scheduling rights?) the activities in those rooms need to be identified. If multi-use (e.g., English, Math and Communication Studies taught in the same room, it is a multi-disciplinary designation)



800 Building (Instructional Classrooms) Remodel



West Entry



800 Building (Instructional Classrooms) Remodel *(continued)*



Faculty Offices



Restrooms



800 Building (Instructional Classrooms) Remodel *(continued)*



Student Lounge



800 Building (Instructional Classrooms) Remodel *(continued)*



East Entry



800 Building (Instructional Classrooms) Remodel *(continued)*



ADA Compliant Walkways

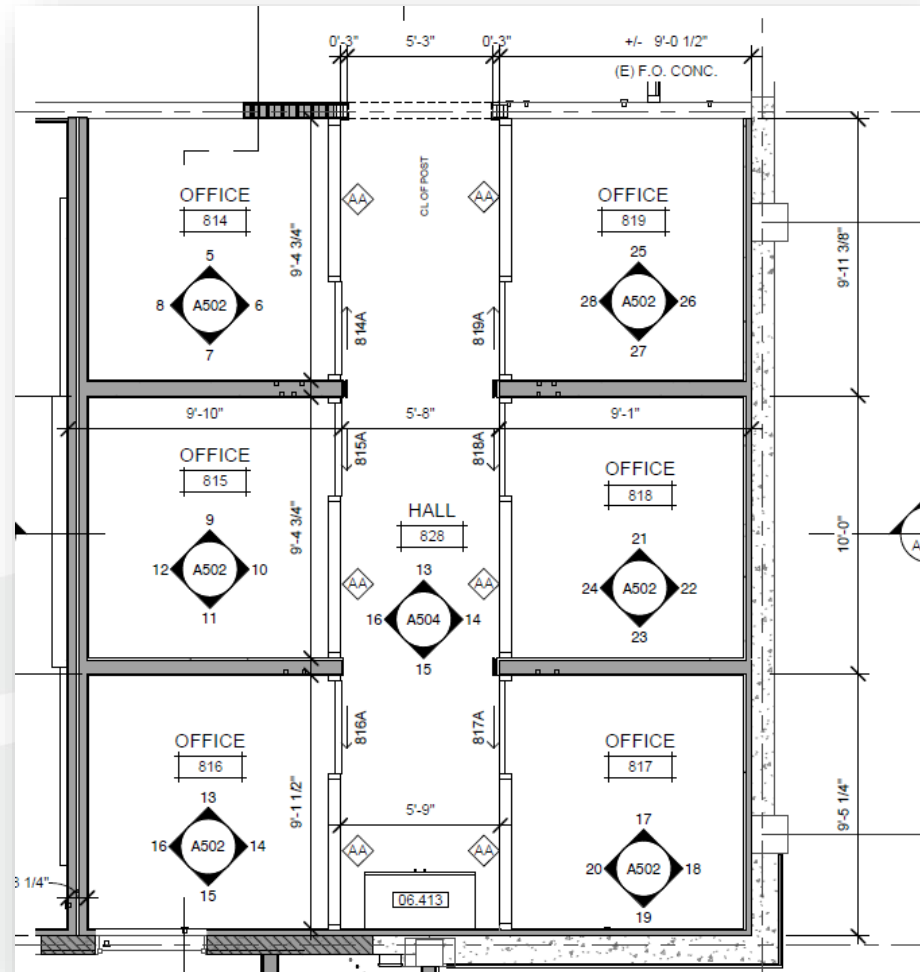


800 Building (Instructional Classrooms) Remodel *(continued)*

Office Assignments?

- Name
- Location

Needed by the end
of January



700 Building (Administrative Offices) Renovation



Human Resources "Pod"
Entry & Side Wall



700 Building (Administrative Offices) Renovation *(continued)*



President's Office
"Pod"

Instruction Office
"Pod"

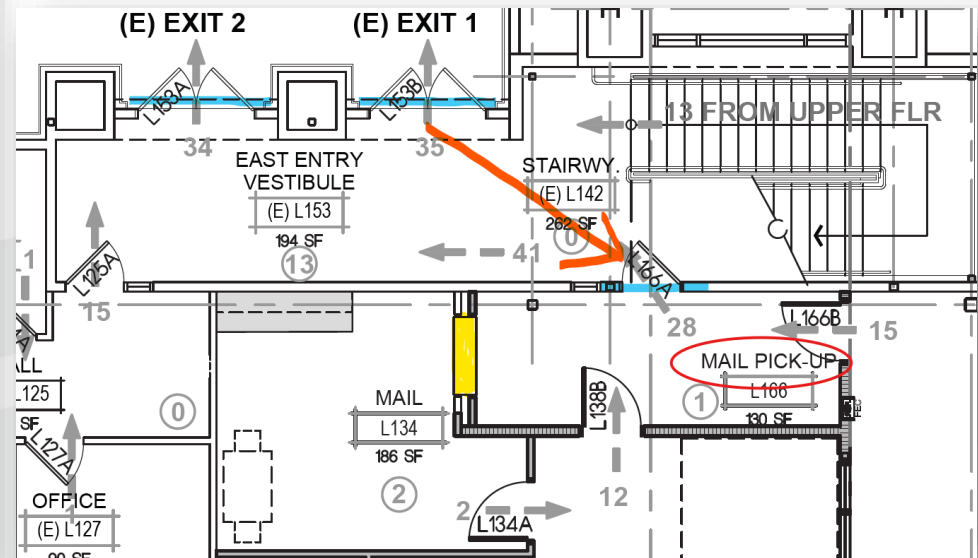


700 Building (Administrative Offices) Renovation *(continued)*

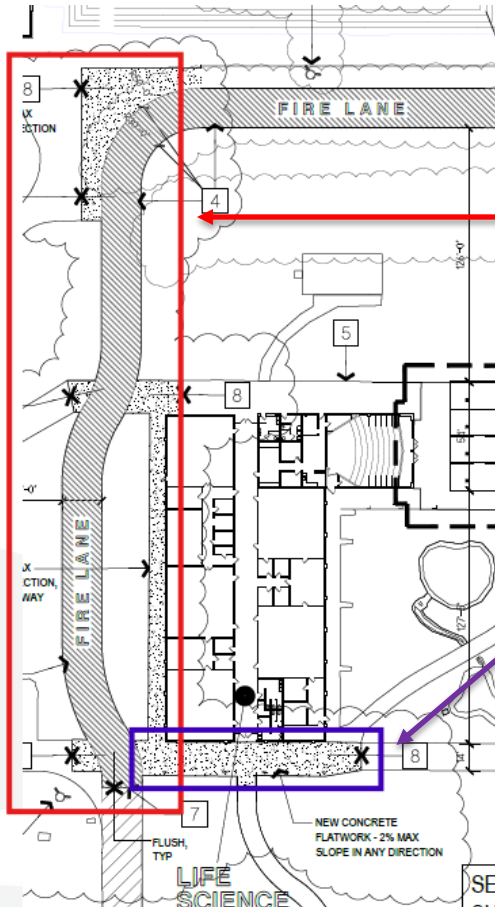


Mailroom Area

Electronic Access through Back Door of Building (adjacent to the 300 Building)



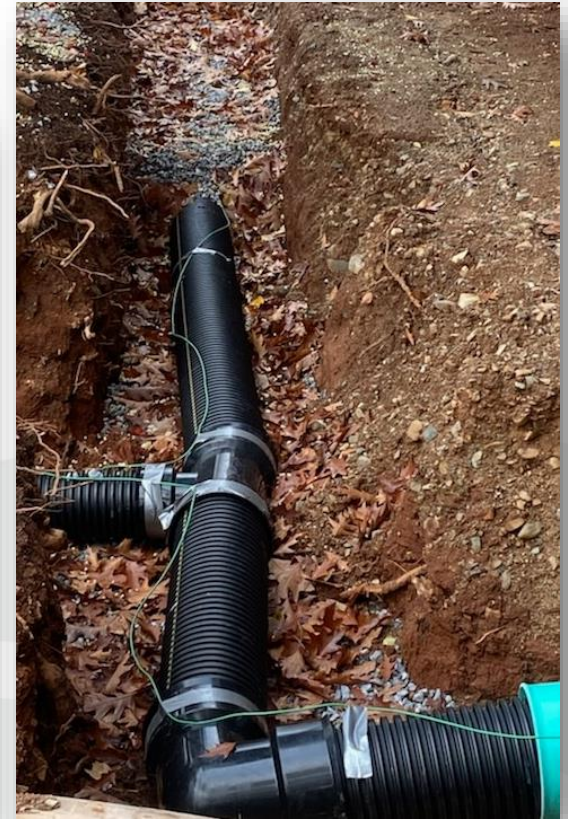
1600 Building Fire Lane Project



- Concrete demo & excavation done
- Drainage pipe being installed
- Concrete demo taking place Thanksgiving week
- New concrete will be poured after that dependent upon weather



1600 Building Fire Lane Project *(continued)*



Future Facilities Improvement Measure

Needs Assessment Informed By:

- Educational Master Plan Survey
- Annual Area Plan Initiatives
- Program Reviews (past 3 years)
- Staff & Student Surveys

Voter polling begins this Friday

Polling results to be presented to the Board of Trustees at the December 10th Regular Meeting



For more information...



About / Bond Projects / Measure H

Theresa Markword,
AVP of Facilities &
Capital Construction
tmarkword@shastacollege.edu
(530) 242-7699

Isabella Greenleaf,
Bond Project Coordinator
igreenleaf@shastacollege.edu
(530) 242-7978

Kacie Richardson,
Bond Project Coordinator
krichardson@shastacollege.edu
(530) 242-7527

Magan Kleinman,
Bond Program Fiscal Analyst
mkleinman@shastacollege.edu
(530) 242-7747

Janette Brockmann,
Bond Program Administrative Professional II
jbrockmann@shastacollege.edu
(530) 319-3214

happy
THANKSGIVING

