



Shasta College

Measure H Bond Projects & Capital Construction Update

Presented to the
Facilities Planning Committee
10/31/2025



800 Building (Instructional Classrooms) Remodel



800 Building (Instructional Classrooms) Remodel *(continued)*



Interior Framing & Electrical Installation



800 Building (Instructional Classrooms) Remodel *(continued)*



800 Building (Instructional Classrooms) Remodel *(continued)*



Skyfold Wall Infrastructure



800 Building (Instructional Classrooms) Remodel *(continued)*



800 Building (Instructional Classrooms) Remodel *(continued)*



700 Building (Administrative Offices) Renovation



700 Building (Administrative Offices) Renovation *(continued)*



President's Office
"Pod"

Instruction Office
"Pod"



700 Building (Administrative Offices) Renovation *(continued)*



1400-1600 Buildings Shade Structures



New Outdoor
Furniture



Projects to be Partially Funded through Measure H

Science Building Renovations

Project	Total Cost	Start Date	End Date	Timeline (Fiscal Years)																
				04	01	02	03	04	01	02	03	04	01	02	03	04	01	02	03	04
25 1600 Building (Life Sciences) Renovation (State Funded - 50% Match)	\$ 18,916,000	8/1/2027	3/31/2029																	
26 1400 Building (Earth Sciences) Renovation (Possibly State Funded - 50% Match)	\$ 18,413,537	8/1/2029	3/31/2031																	
Total Costs for Science Building Renovations	\$ 37,329,537																			
Less State Funding Match	16,596,144																			
Total Estimated Bond Funds Spent on Science Building Renovations	\$ 20,733,393																			

\$37,329,537
Total Cost for Both Projects




- = Bond
- = Bond with State Funding Match
- = Bond with Other Funding Sources



2022 Assessment

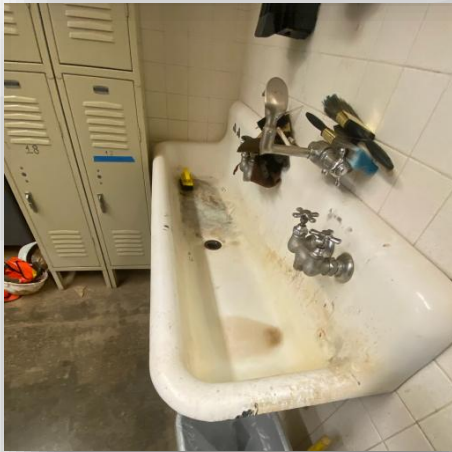
Shasta College			
Campus Information	Building Information	Room Information	
Gross Sq. Ft: 671,778		Facility Condition Index: 86.59%	Replacement Cost: \$318,698,589.55
Estimate Cost: \$175,414,115.67		Additional Cost: \$100,558,838.77	Repair Cost: \$275,972,954.44

2025 Assessment

Shasta College			
Campus Information	Building Information	Room Information	
Gross Sq. Ft: 674,402		Facility Condition Index: 75.11% 	 Replacement Cost: \$329,315,368.47
Estimate Cost: \$157,211,712.17		Additional Cost: \$90,143,988.66	 Repair Cost: \$247,355,700.83



Needed Improvements



Proposed Facilities Improvement Measure November 2026

- Bond Size: Estimated \$75 to \$90 Million
- Acts as an extension to the Measure A General Obligation Bonds which are expiring
- Needed to continue campus revitalization started with Measure H



For more information...



About / Bond Projects / Measure H

Theresa Markword,
Interim AVP of Facilities &
Capital Construction
tmarkword@shastacollege.edu
(530) 242-7699

Isabella Greenleaf,
Bond Project Coordinator
igreenleaf@shastacollege.edu
(530) 242-7978

Kacie Richardson,
Bond Project Coordinator
krichardson@shastacollege.edu
(530) 242-7527

Magan Kleinman,
Bond Program Fiscal Analyst
mkleinman@shastacollege.edu
(530) 242-7747

Janette Brockmann,
Bond Program Administrative Professional II
jbrockmann@shastacollege.edu
(530) 319-3214

