



# Shasta College

## Measure H Bond Projects & Capital Construction Update

---

Presented to the  
Board of Trustees

9/10/2025



# Financial Overview Highlights

## Shasta-Tehama-Trinity Joint Community College District Measure H General Obligation Bonds

Cumulative Recap of Bond Activity  
September 7, 2017 - August 31, 2025

### Bond Income/Outflow

#### Tax Exempt Bonds

Bond Sales Series A (9/7/2017)	\$ 50,000,000
Series A Net Issuance Costs	(208,359)
Bond Sales Series B (10/3/2019)	20,000,000
Series B Issuance Costs	(119,820)
Bond Sales Series C (12/9/2020)	10,000,000
Series C Issuance Costs	(53,788)
Refunded 2009A/2008A Bonds	(7,987,268)
Additional Funds from Other Sources	27,809,345
Net Available Funds for Projects	\$ 99,440,110
Encumbrances	(6,083,637)
Project Expenditures to Date	(93,618,429)
Budget Remaining	(2,244,818)
Ending Available Funds for Projects	\$ (2,506,773)

#### Taxable Bonds

Bond Sales Series B-1 (10/3/2019)	\$ 20,000,000
Series B-1 Issuance Costs	(188,882)
Bond Sales Series C-1 (12/9/2020)	\$ 20,000,000
Series C-1 Issuance Costs	(186,450)
Bond Sales Series D (6/27/2023)	19,000,000
Series D Issuance Costs	(184,964)
Additional Funds from Other Sources	2,406,229
Net Available Funds for Projects	\$ 60,845,934
Encumbrances	(6,371,363)
Project Expenditures to Date	(25,919,561)
Budget Remaining	(15,777,704)
Ending Available Funds for Projects	\$ 12,777,305

### Interest Proceeds for Future Allocation (through 6/30/25)

Fiscal Year	Tax Exempt Bonds	Taxable Bonds		Total Interest Proceeds
		GO Bonds	NMTC Interest	
2017-2024	\$ 2,437,440	\$ 1,640,669	\$ 139,137	\$ 4,217,247
2024-2025	590,385	686,383	-	\$ 1,276,768
<b>TOTAL</b>	<b>\$ 3,027,826</b>	<b>\$ 2,327,052</b>	<b>\$ 139,137</b>	<b>\$ 5,494,015</b>

Total Monthly Expenditures: \$1,358,047



# Financial Overview Highlights *(continued)*

## TAX EXEMPT BONDS: Cumulative Recap of Project Budgets, Additional Revenues, Encumbrances and Expenditures

Active Projects	Current Budget	Funds from Other Sources	Source	Bond Project Reserve Alloc.	Total Budget	Encumbered but not Expensed	Expenditures to Date	Budget Remaining
18-017 Solar Project - East Lot	6,400,000	0		500,000	6,900,000	274,977	6,608,163	16,859
19-001 200 Building (Library) Renovation	7,515,030	15,589,000	(5)		23,104,030	1,035,451	21,903,063	165,516
20-003 800 Building Renovation	6,267,700	5,070,000	(5)		11,337,700	4,773,208	4,502,049	2,062,443
<b>Total Tax Exempt Bonds</b>	<b>\$74,137,538</b>	<b>\$27,809,345</b>			<b>\$101,946,883</b>	<b>\$6,083,637</b>	<b>\$93,618,429</b>	<b>\$2,244,818</b>

## TAXABLE BONDS: Cumulative Recap of Project Budgets, Additional Revenues, Encumbrances and Expenditures

Active Projects	Current Budget	Funds from Other Sources	Source	Bond Project Reserve Alloc.	Total Budget	Encumbered but not Expensed	Expenditures to Date	Budget Remaining
Measure H General Expenses (Taxable Series Expenditures)	800,000	0			800,000	185,476	292,006	322,517
SC Community Leadership Center Purchase (BLOCK 7)	22,500,483	106,229	(2)(7)		22,606,712	0	21,582,265	1,024,447
18-009A Campus Wide Infrastructure - Design	83,222	0			83,222	3,905	0	79,317
18-009B Campus Wide Infrastructure - Electrical Upgrades	513,497	0			513,497	25,000	396,257	92,240
18-010 SC Main Campus Keying & Access Control	374,998	0			374,998	6,786	58,933	309,278
21-007 100 Bldg-Phase 2 (Student Services One-Stop Shop)	10,500,000	0			10,500,000	168,724	733,129	9,598,147
21-002 1600 Building (Life Sciences) Renovation	1,663,000	0			1,663,000	0	75,669	1,587,331
23-006 700 Building Renovation	5,847,550	0			5,847,550	4,144,735	530,415	1,172,400
22-010 SC Main Campus Fiber Project - Phases 2 & 3	375,000	0			375,000	52,488	119,174	203,338
24-002 Space Refresh	500,000	0			500,000	25,000	407,181	67,819
24-009 SC Fire Academy 6-Story Fire Tower	913,300	2,300,000	(8)		3,213,300	1,759,249	318,184	1,135,868
25-002 1400 Building (Earth Sciences) Renovation	185,000	0			185,000	0	0	185,000
<b>Total Taxable Bonds</b>	<b>\$45,662,400</b>	<b>\$2,406,229</b>			<b>\$48,068,629</b>	<b>\$6,371,363</b>	<b>\$25,919,561</b>	<b>\$15,777,704</b>

There are no budget increases or decreases to report.



# 200 Building (Library) Renovation



**Grand Opening  
Celebration!**



# 200 Building (Library) Renovation *(continued)*



# 200 Building (Library) Renovation *(continued)*



# 200 Building (Library) Renovation *(continued)*



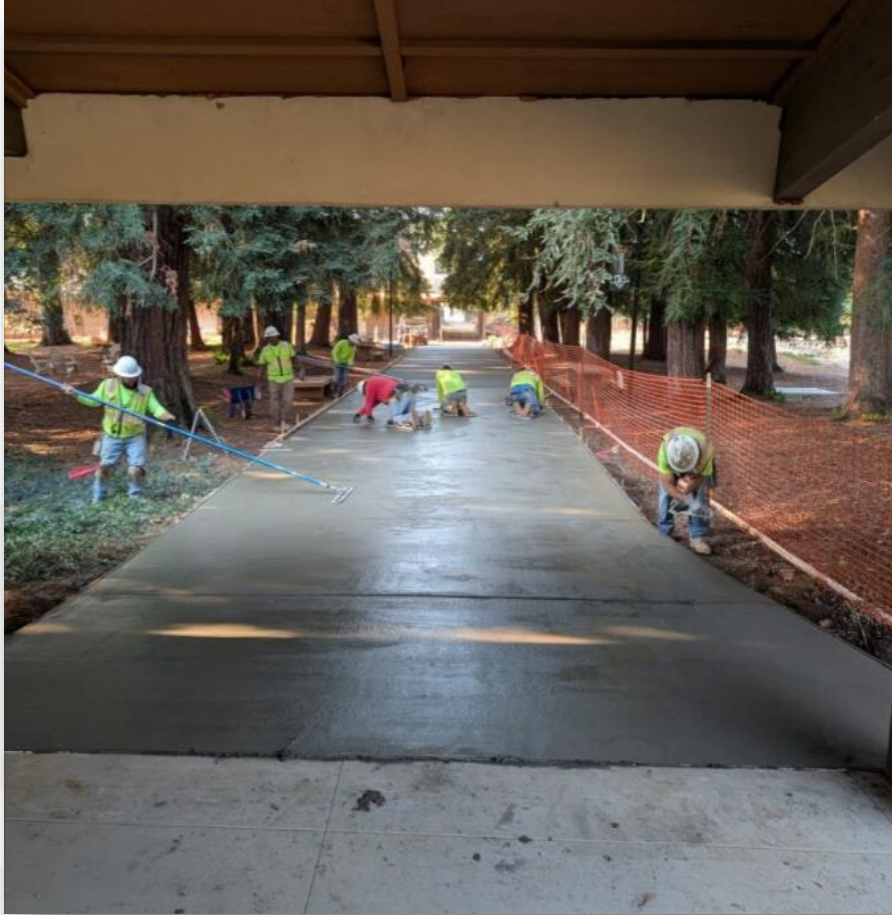
# 800 Building (Instructional Classrooms) Remodel



Solatube® Infrastructure



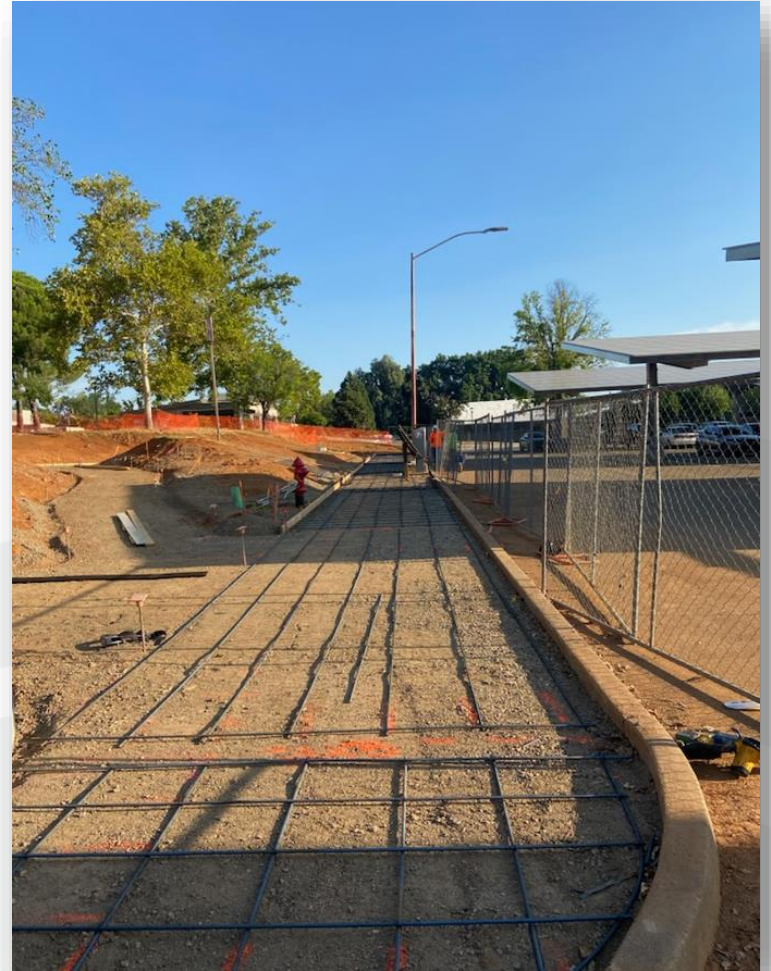
# 800 Building (Instructional Classrooms) Remodel *(continued)*



New Irrigation Pipe



# 800 Building (Instructional Classrooms) Remodel *(continued)*



# 800 Building (Instructional Classrooms) Remodel *(continued)*



Beam for Skyfold Wall



# 700 Building (Administrative Offices) Renovation



HVAC Equipment Removal



# 700 Building (Administrative Offices) Renovation



# For more information...



## About / Bond Projects / Measure H

Theresa Markword,  
Interim AVP of Facilities &  
Capital Construction  
[tmarkword@shastacollege.edu](mailto:tmarkword@shastacollege.edu)  
(530) 242-7699

Isabella Greenleaf,  
Bond Project Coordinator  
[igreenleaf@shastacollege.edu](mailto:igreenleaf@shastacollege.edu)  
(530) 242-7978

Kacie Richardson,  
Bond Project Coordinator  
[krichardson@shastacollege.edu](mailto:krichardson@shastacollege.edu)  
(530) 242-7527

Magan Kleinman,  
Bond Program Fiscal Analyst  
[mkleinman@shastacollege.edu](mailto:mkleinman@shastacollege.edu)  
(530) 242-7747

Janette Brockmann,  
Bond Program Administrative Professional II  
[jbrockmann@shastacollege.edu](mailto:jbrockmann@shastacollege.edu)  
(530) 319-3214

